

Referenser

Grand Poet Hotel by Samarah



Uponors roll



Grand Poet Hotel by Samarah, Riga

Historical building in heart of Riga. Universal Uponor MLC materials were used in the hotel water supply and radiator heating system.

It is the first artist built hotel in Riga comprising a modern art and bohemian lifestyle. The hotel building has the ancient and colourful history, preservation of which has required a special care during the renovation process.

Projektfakta

Location	Färdigställt	
Riga, Latvia	2018	
Byggnadstyp	Product systems	
Hotell	Värme och kyla	
Adress	Hemsida	Projekttyp
Raina bulvaris 5/6, Riga, Latvia, LV1050	https://grandpoet.semarahhotels.com/?lang=en	Renovation

Partners

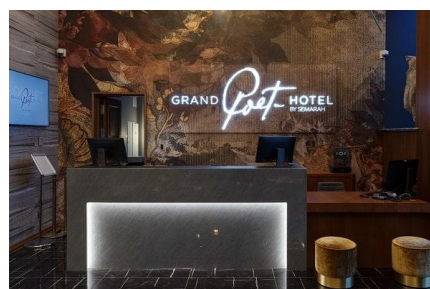
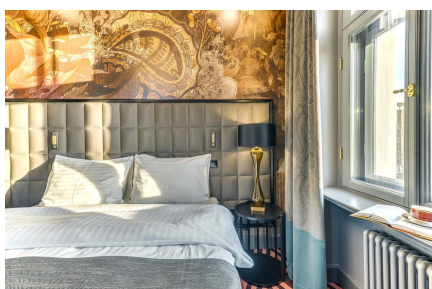
Architect: Sarma & Norde

Interior: Stylt Trampoli

Short description

A new hotel with 168 stylish rooms and extra luxurious apartments. Here everything is in one place – a restaurant for a new and sophisticated gastronomic experience, modern event and conference rooms, spacious Wellness center, as well as three elegant SPA rooms that are going to be open in early spring. The hotel is a pearl for design idolaters, free-livers and cultural experiences. Universal Uponor MLC materials were used in the hotel water supply and radiator heating systems.

Grand Poet Hotel by Samarah, Riga



Uponor

Adress

Uponor VVS
737 03 Virsbo

W www.uponor.com

Uponor Infra AB
Industrivägen 11
513 32 Fristad