

Reference

# Loft Apartments Praha Bubeneč



## Vključenost Uponsorja



3000

## Loft Apartments Praha Bubeneč

Thermally Activated Building Systems (TABS) as Uponsor Contec.

### Dejstva o projektu:

Location	Zaključek
Praha, Czech Republic	2009
Vrsta objekta	Product systems
Večstanovanjski objekt	Ploskovno ogrevanje in hlajenje
Naslov	Vrsta projekta
Bubeneč	Novogradnja

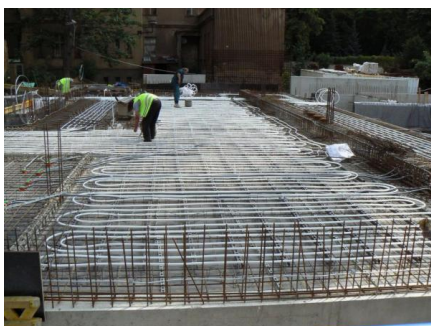
## The floor to ceiling west-facing glass walls are fitted with exterior sun shading louvers and ensure the highest possible level of privacy

The author of this residential complex is the recognized and renowned architect John Eisler. The project "12 LOFTS" consists of three residential objects, which are interconnected by a large, ground level podium. The roof of the podium, located just over 3 meters above the adjacent sidewalk, is designed as a large terrace with planting and water features. The podium houses an entrance hall with a 24 hour reception desk, spacious garages, private storage and technical support spaces. Through its glass wall, the entrance hall opens up to Ronalda Reagana Street. A day lit corridor connects the hall with the stair and elevator cores of the individual houses. Each of the houses contains four loft-like apartments. The two topmost floors of each building form duplex apartments with wraparound terraces. The façade of all three residential objects is made of architectural concrete, aluminum and glass. On three sides (north, east and south) the architectural concrete façade is

punched through by strategically located glazed openings, lighting some of bedrooms, study rooms, kitchens and bathrooms. The main living spaces of the apartments face west with a view of the internal gardens with reflecting pools, atria and the eastern façades of the adjacent apartment houses.

The floor to ceiling west-facing glass walls are fitted with exterior sun shading louvers and internal privacy blinds, and as they are turned away from street views and as the facing walls have only a small number of openings, ensure the highest possible level of privacy in the individual apartments. The apartments in the westernmost building face Bubenečská Street. The fifth, topmost floor on each of the buildings is set back forming a glazed penthouse with terraces facing east, west and south.

## Loft Apartments Praha Bubeneč



uponor

Adresa

DOM-TITAN d.d.  
Kovinarska cesta 28

Telefon 00386 1 8309 168  
E-Mail [pc5@dom-titan.si](mailto:pc5@dom-titan.si)  
W [www.uponor.com](http://www.uponor.com)