

## Aleksanterinkatu 5 in Lahti will be completed with R2I blocks



### Uponor involvement



252 flats

## Aleksanterinkatu 5 in Lahti will be completed with R2I blocks

An 8-storey apartment is rising in a former bank district in Lahti. The target will contain 265 apartments and is designed by A1 Arkkitechdit Oy and will be built by Nuorisosäätiö. There are 256 rental apartments reserved for students on floors 2-7. Uponor R2I blocks will be installed in all of the student-apartments in connection with bathroom and kitchen elements. Aleksis 5 is the first new destination in which R2I blocks are being delivered and in which sound-absorbing Decibel drains are used.

An 8-storey apartment is rising in a former bank district in Lahti. The target will contain 265 apartments and is designed by A1 Arkkitechdit Oy and will be built by Nuorisosäätiö. There are 256 rental apartments reserved for students on floors 2-7. Uponor R2I blocks will be installed in all of the student-apartments in connection with bathroom and kitchen elements. Aleksis 5 is the first new destination in which R2I blocks are being delivered and in which sound-absorbing Decibel drains are used.

### Project Facts:

Location	Completion
Lahti, Finland	2017
Vrsta objekta	Product systems
Multifamily homes	Port
Project Type	
New building	

## Partners

Construction company:

Nuorisosäätiö

Architect: A1-Arkkitehdit Oy

Planner: Granlund Oy

Contractor: Salpausselän Rakentajat

Oy

Fitter: RST-Asennuspalvelu Oy

---

## Advantages of the elements already at the design stage

There are a lot of individual ascents due to the number of small apartments. The Uponor R2I block, consisting of coupling-finished modules, is connected to bathroom elements in the target locations. Salpausselän Rakentajat Oy's construction manager Reino Nieminen has been involved in the project from the beginning. He notes that Uponor's advance planning was exemplary.

- Uponor's people did a lot of work and ran the programme so that the results were also top notch. So difficult beams were able to outlined in advance and their by-pass correctly planned. This would have been difficult using concrete elements, added Salpausselän Rakentajat Oy foreman Jani Wessman.
- The dodges of the beams were resolved using the elements. The elements are more adaptable and flexible than elements made from concrete. The exact design makes the installation phase considerably easier, emphasised Uponor's Toni Wahlfors.

## Flexibility in installations

Construction in the very heart of the city has been a particular challenge, especially in terms of logistics and the use of space. Uponor R2I blocks were selected for the target also due to logistics. On the worksite, two men carried the elements into place.

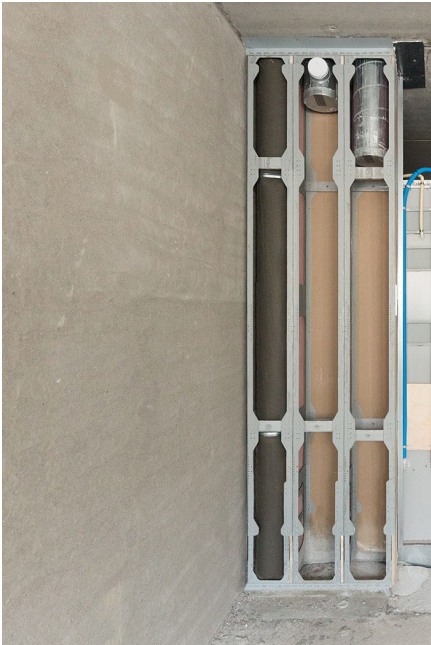
- In this target location, cooperation with the logistics supplier required refinement. The short time frame caused challenges to haul the construction materials due to the centralised location. But a solution was certainly found for everything, Wahlfors added.
- A crane was needed only momentarily when the element bundles were raised to the floors. A crane was not at all needed in the installation stage. It was a big advantage. The installation of concrete blocks by crane would have taken an impossibly long time. The interfaces of the bathroom elements to the blocks was able to be done thanks to the flexibility of the elements, foreman Jani Wessman noted.

## R2I block is suitable for both renovation and new construction

Uponor's R2I block is suitable for new construction needs. The element saves space and costs compared to traditional solutions. One big advantage of R2I block is leakage security, as well as the rapid detectability of any leakage. The sound technology of the R2I block has been given special attention. For the drain, sound absorbing Uponor Decibel drain has been used in the element. The material and multi-layered structure makes the Decibel system silent and especially suitable for acoustically demanding targets.

The elements are a very good choice in small living spaced apartments. Right now we also have another new building location in which the R2I block will be used for the kitchen blocks, SSR Oy's construction manager Reino Nieminen noted upon conclusion.

Aleksanterinkatu 5 in Lahti will be completed with R2I blocks



**uponor**

Telefon Za sva pitanja javite nam se  
na: [podrskakupcima@uponor.com](mailto:podrskakupcima@uponor.com)  
E-mail [podrskakupcima@uponor.com](mailto:podrskakupcima@uponor.com)  
W [www.uponor.com](http://www.uponor.com)