



Referințe

## Villeroy & Boch

### Implicarea Uponor



4,000 sqm

## Villeroy & Boch

Part of the historic abbey complex on the premises of Villeroy & Boch's headquarters in Mettlach has been completely renovated.

### Date despre proiect

Location

Mettlach, Germany

Completare

2018

Tip de clădiri

Office buildings

Product systems

Încălzire & răcire radiantă, Sisteme de țevi multistrat

Tipul proiectului

Renovation

### Parteneri

Hofmann & Ollinger, Mettlach-Wehingen

[www.hoffmann-ollinger.de](http://www.hoffmann-ollinger.de)

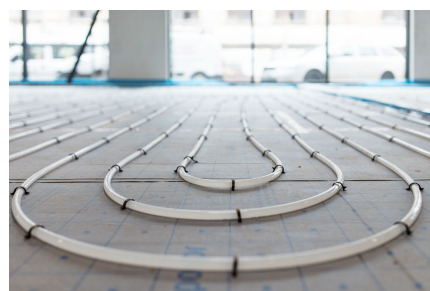
## Underfloor heating for office and conference center

The upper two floors are used as an office and conference center with open structures and a variety of meeting rooms that promote communication and collaboration among all employees. On the first floor, a "marketplace" has been created that is freely accessible to guests, tourists and customers, where products from the extensive Villeroy & Boch portfolio and complementary offers are presented in an environment that reflects the brand feeling.

### Underfloor heating for comfortable and efficient office working environment

Uponor pipes laid by Hofmann & Ollinger, Mettlach-Wehingen, for underfloor heating and cooling ensure a comfortable temperature throughout the 4,000 square meter area. The drinking water installation, including the distribution and riser pipes, was also brought up to the latest state of the art with Uponor pipes in sizes 16-75.

## Villeroy & Boch





**uponor**

Address

Uponor Romania  
Splaiul Unirii 76, parter, Sector 4,  
București

Phone +40 31 805 33 91  
E-Mail [serviciuclienti@uponor.com](mailto:serviciuclienti@uponor.com)  
W [www.uponor.com](http://www.uponor.com)