

Concrete core activation České Budějovice Research Library



Uponor feladat

- ✓ Contec ON system 700 m² incl. underlay for concrete finish, 14x2.0 mm piping and Contec ON module. Main distribution pipelines PE-Xa 40 mm.

Concrete core activation České Budějovice Research Library

Heating and cooling using the Contec ON in The Research Library.

Heating and cooling of the new research library with the Contec ON concrete core activation system

Projekt adatok:

Location	Kész
České Budějovice, Czech Republic	2020
Épület típusa	Product systems
Irodaépület	Felület fűtés/hűtés
Projekt típusa	
Újépítés	

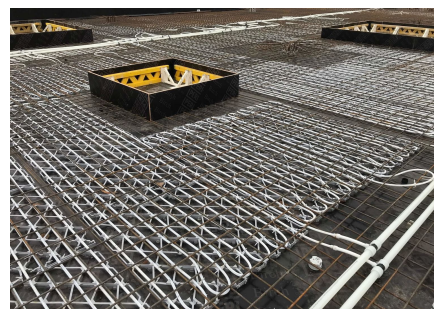
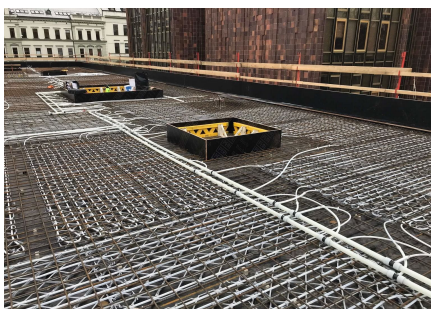
Partnerek

- ČIS ČB

Books require year-round indoor temperature

This building with a total ground area of 1,000 m² is equipped with the Contec ON concrete core activation system for year round temperature control of the interior climate within the required limits (between 20 and 26 °C summer/winter). Due to the options on offer, the entire system is fed from one place through ten outlets using PE-Xa 40 mm piping, to which separate modules for activation of the Contec ON system are connected by Tichelmann distributor. It is a one-storey building with a completely glazed façade without any shade whatsoever. With regard to these circumstances, a study was conducted using a 3D model with dynamic simulation of changing temperatures and burdens. The Contec ON system is capable of covering all temperature requirements all year round.

Concrete core activation České Budějovice Research Library





uponor

Kapcsolat

Uponor Épületgépészeti Kft.
1043 Budapest
Lorántffy Zsuzsanna u 15/B
Magyarország

Email ugyfelszolgalat@uponor.com
W www.uponor.com