

Reference

## Concrete core activation České Budějovice Research Library



### Uključenost Uponora

- ✓ Contec ON system 700 m<sup>2</sup> incl. underlay for concrete finish, 14x2.0 mm piping and Contec ON module. Main distribution pipelines PE-Xa 40 mm.

## Concrete core activation České Budějovice Research Library

Heating and cooling using the Contec ON in The Research Library.

Heating and cooling of the new research library with the Contec ON concrete core activation system

### Činjenice o projektu:

Location	Završetak
České Budějovice, Czech Republic	2020
Vrsta objekta	Product systems
Poslovna zgrada	Površinsko grijanje i hlađenje
Vrsta projekta	
Nova zgrada	

### Partneri

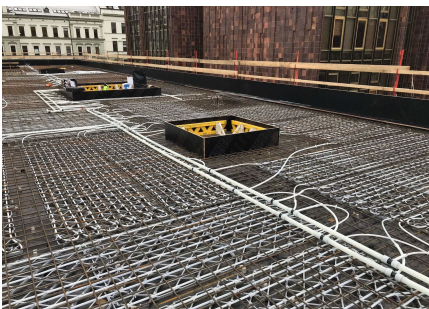
- ČIS ČB



## Books require year-round indoor temperature

This building with a total ground area of 1,000 m<sup>2</sup> is equipped with the Contec ON concrete core activation system for year round temperature control of the interior climate within the required limits (between 20 and 26 °C summer/winter). Due to the options on offer, the entire system is fed from one place through ten outlets using PE-Xa 40 mm piping, to which separate modules for activation of the Contec ON system are connected by Tichelmann distributor. It is a one-storey building with a completely glazed façade without any shade whatsoever. With regard to these circumstances, a study was conducted using a 3D model with dynamic simulation of changing temperatures and burdens. The Contec ON system is capable of covering all temperature requirements all year round.

### Concrete core activation České Budějovice Research Library





**uponor**

Uponor d.o.o.

Uponor d.o.o.  
Dubravkin trg 2/1  
10 000 Zagreb  
Hrvatska

Telefon +385(0)16197158  
W [www.uponor.com](http://www.uponor.com)