

uponor

Underfloor Heating Packs



SCREED FLOOR PACKS

TIMBER FLOOR PACKS

LOW PROFILE FLOOR PACKS

**14
SQM**

**28
SQM**

**42
SQM**

**56
SQM**

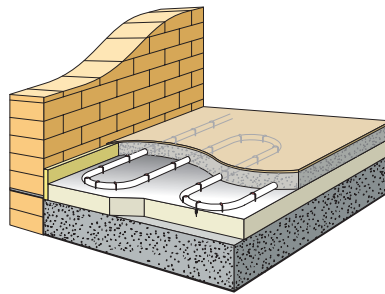
**70
SQM**

Pack Options

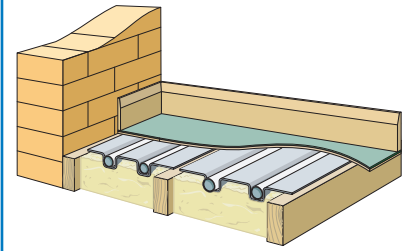
Pack sizes available:

14SQM - 1 ZONE
 28SQM - 1 ZONE
 28SQM - 2 ZONE
 42SQM - 1 ZONE
 42SQM - 2 ZONE
 42SQM - 3 ZONE
 56SQM - 1 ZONE
 56SQM - 2 ZONE
 56SQM - 3 ZONE
 70SQM - 1 ZONE
 70SQM - 2 ZONE
 70SQM - 3 ZONE
 70SQM - 4 ZONE

Screed Pack



Timber Pack



Low Profile Pack



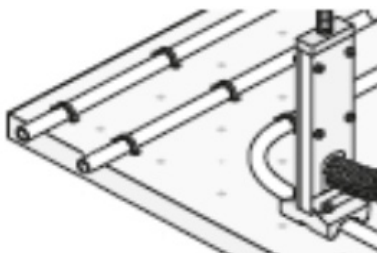
Each pack contains

- Pipe • Manifold
- Adapters • Controls
- Edge Strips
- Bend Support • Clips

*Controls are wireless c/w smart app except zone 1 packs

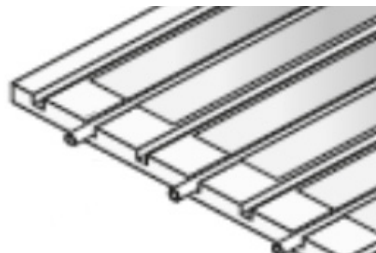
Uponor U Clips

All components of the Uponor U clip system are designed for ease of installation. The clips are compatible with the Uponor Tacker tool allowing pipes to be clipped to insulation boards (excluded). All components are designed to ensure optimum safety and reliable operation.



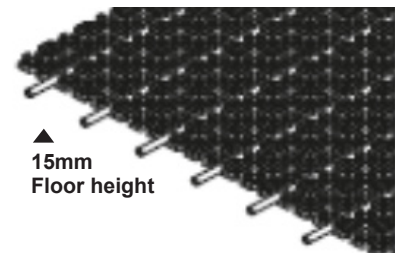
Uponor Siccus 16

The universal Uponor Siccus 16 provides underfloor heating for new constructions as well as renovation projects and suitable for multiple construction styles. It is flexible and easy to apply in a variety of building constructions.



Uponor Minitec

Uponor Minitec is the solution for underfloor heating on existing screed, timber or tiled floors. It has an installation height of only 15mm and consists of a self adhesive foil element and PE-Xa pipe 9.9mm. Minitec is optimised for near surface heating in residential buildings.



Your benefits

- 16mm flexible pipes and U clips allow easy installation
- Suitable for all types of screeds
- Fast to install: integrated insulation layer and cover required
- Universal pipe clips for pipe thickness 14-20mm
- Easy installation: ergonomically designed stapler available

Your benefits

- 400mm wide Aluminium plates
- plates suit most floor joists applications
- rockwool insulation required underneath plates (excluded)
- instant heat possible due to no waiting for screed curing times.

Your benefits

- Low height: ideal for integration into renovations
- Easy, fast, efficient installation by one technician
- Comfort: short heat-up times, fast temperature control response
- Energy saving: low operating temperatures

Pack Installation Guides

Screed Packs – Kombi Klip Fixing



To prevent the floor from overheating directly below the manifold or through doorways, where pipes are congested together, we would advise insulating the pipe, especially if they are not used to heat the room through which they pass.

- Identify each floor area to be covered by each coil/loop of UFH pipe. If you have had a design prepared by Uponor, the rooms to be heated and the coil lengths allocated to each area will be identified on your quotation and/or design layout drawing.
- It is important to ensure the pipes do not cross over each other, therefore time should be spent beforehand configuring the route for the feed pipes from the manifold location to their respective area/room to be heated.
- Typically, feed pipes pass through door openings, etc. However, where possible, particularly to areas adjoining the manifold location, feed pipes could be taken directly through partition walls and into their respective rooms. This will also help alleviate any congestion around the manifold location. Ensure all holes drilled are below the screed floor finished level. When threading the pipe through the hole ensure it has been capped off and there are no sharp edges, which could score and damage the pipe.

It is recommended that the UFH pipes, when passing through walls, are sleeved with Uponor protective conduit.

- Once you have a clear picture of the installation, begin to install and lay the pipe. Firstly thread the first coil end behind the return manifold and connect onto the manifold flow port. If passing through a partition wall first thread the pipe through the hole and up behind the return manifold.

If using PEX pipe, 'pipe bend supports' must be fitted on every loop at the point where the pipes rise from the floor/insulation and up to connect to the manifold, i.e. 2 required per loop.

In all cases, the pipe should be laid so that the flow direction is to the coldest area of the room first, for example, under windows and along external walls.

To assist with installation, Uponor pipe is marked at every metre length. It is good practice to make a note of the starting metre at the manifold and keep referencing how much pipe has been laid whilst installing. This will help ensure you leave sufficient pipe to return to the manifold. Each loop should be installed without any joints in the floor.

Timber Packs – Installation of Siccus Heat Emission Plates



- The plates are for heat distribution only and are not structural. They are easily damaged and it is important that no other trades are allowed where the UFH is being installed. The heat emission plates normally cover approximately 80% of the floor area. Plates should never touch each other, as they expand when heated and can create noise. Plates are only laid under straight runs of pipe.
- Ensure all insulation and the necessary battening work is installed and complete, prior to laying of the plates. If cross battening, this is best achieved using 25mm x 100mm battens. Leave the ends of the battens loose so that the pipe loop can be laid beyond the end of or under the cross batten. Fix batten ends before laying floor.
- Lay the heat emission plates across the joists without fixing, leaving a gap between the ends and sides of each plate. Check to ensure appropriate number of plates are evenly spread out across the entire area before fixing. Lay the first plates at each end of the room, leaving a minimum 300mm space (16mm) and 450mm space (20mm) space from the wall edge, to

enable the pipe to bend 180 degrees around. Space the plates out evenly ensuring gaps between plates are at least 10mm but less than 100mm. Use any sections of plates in the middle of the room.

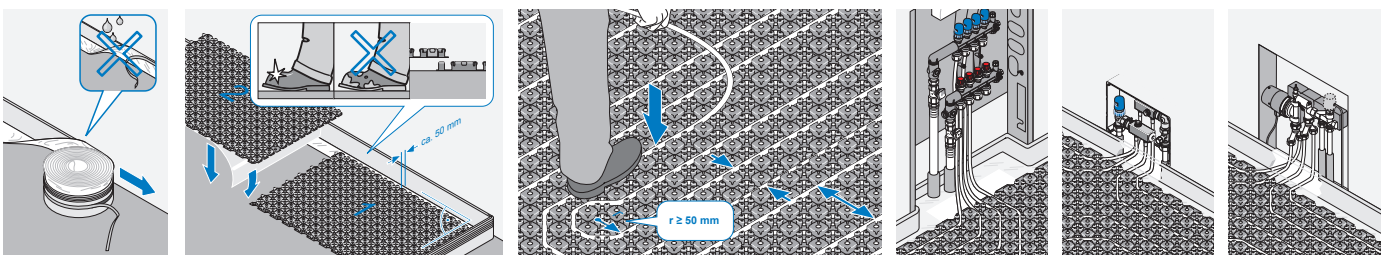
- When the plates have been laid on the first row of joists, fix these into position and repeat the process for the remaining joists.
- Careful consideration should be given to the location of plates around the manifold area and along feed pipe routes, where the UFH pipes congregate together, cross joists at right angles and are non standard pipe centres.

Cutting Plates

The plates are scored $\frac{1}{3}$ from one end of the plate and at $\frac{1}{6}$ from the other and are easily split along these score lines. Keep the pipe groove uppermost and sharply break the plate over a straight edge. If different lengths are required, score the plate deeply with a Stanley knife and cut along the pipe groove with a hacksaw.

Clean off the burrs in the pipe groove to prevent damage to the pipe.

Low Profile Packs – Overview of the installation steps



Mounting edge strips

Installing Minitec panel

Installing pipes in Minitec panel

Connecting PE-Xa pipes in Minitec panel

Connecting PE-Xa pipes in Minitec panel

Connecting PE-Xa pipes in Minitec panel



How to get your pack:

1. Contact merchant to order pack

STEP 1 - select floor construction

STEP 2 - advise what total square meters for heated floor

STEP 3 - advise how many Zones

Merchant will reply with quotation after checking with Uponor

2. Or contact Uponor for details

Uponor Limited

The Pavilion,
Blackmoor Lane,
Watford,
Hertfordshire,
WD18 8GA

or support.uk@uponor.com

or contact your local Uponor representative
contact details available from uponor.uk.co.uk

Uponor Limited

The Pavilion,
Blackmoor Lane,
Watford,
Hertfordshire,
WD18 8GA

T 01923 927000

F 01923 223760

E enquiries.uk@uponor.com

W www.uponor.co.uk