



Uponor

Produktnyhet

Uponor Smatrix Aktuator Universal

Aktuator med adapter som åpner for
ny teknologi til eksisterende anlegg

Nå kan eksisterende anlegg oppgraderes uten å bytte fordeler! Den nye aktuatoren, Uponor Smatrix Aktuator Universal, kan monteres direkte til de fleste gulvvarmefordelere på markedet. Gamle anlegg kan enkelt med denne installasjonen oppgraderes til ny teknologi. Bedre komfort og lavere energiforbruk gjør regnestykket enkelt.

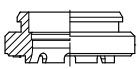
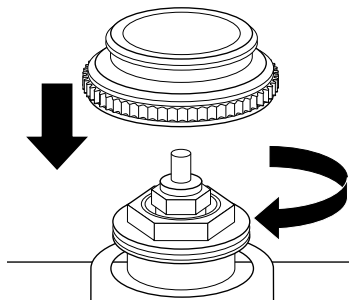
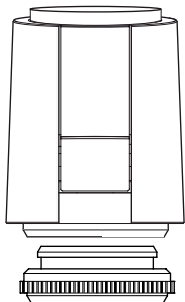
Oppgradering uten fordelerbytte!



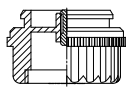
Uponor Smatrix Aktuator Universal 24 V, NC, 1W

NRF nr.	Uponor nr.	Enhet	
836 1015	1083575	sett	

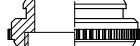
Uavhengig av fabrikat på eksisterende rørsystem og fordeler, vil Uponor Smatrix Aktuator Universal kunne benyttes på de aller fleste fordelere. Aktuatoren passer til både riktig gamle fordelere og fordelere av nyere dato. Oppgradere nå, for bedre komfort og lavere energiforbruk!



VA 26



VA 16 H
M26x1.5 mm



VA 50
M30x1.5 mm

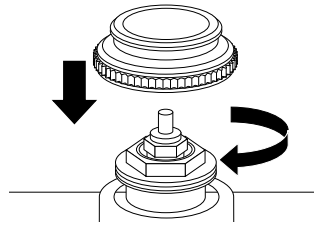
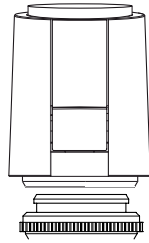


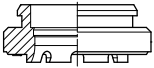
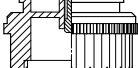

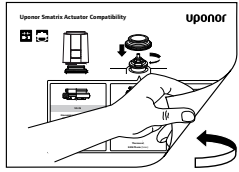
Scann QR
koden for å se
kompabilitetslisten.

Uponor AS
Støttumveien 7
1541 Vestby
T 64 95 66 00
F 64 95 31 20
W www.uponor.no

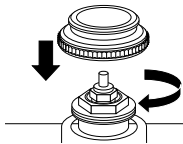
Uponor Smatrix Actuator Retrofit Compatibility


uponor



 <p>VA 26</p> <p>Giacomini (is standard by LK), LK manifolds</p>	 <p>VA 16 H M28x1.5 mm</p> <p>Herz: Thermostatic Valve series 'TS 98 V', FB – Stangenverteiler, 3-way-valve type 'Calis TS RD' Control Valve type 'TS 99 FV' (H) Control Valve type 'TS V'</p> <p>Buderus, KAN-Therm (brass), Polytherm (H), Thermoval</p>	 <p>VA 50 M30x1.5 mm</p> 
--	---	--

08 | 2015



 <p>VA 50 M30x1.5 mm</p> <p>Uponor: Cronatherm: EV-I 1993–2004, DV-I 1994–2004 Polytherm: Stainless steel 2005–2013 Unipor Unipipe Brass series MF, F, FBH 1997–2001 Uponor all ECO Stainless steel manifolds, Profi brass manifolds > 2004, Stainless steel > 2008</p> <p>Acome (Strawa), Afriso pro Calida EF1 (plastic); Aquatechnik Italy (Multirapid, < 2007, > 2009); Aquatherm (brass), Artiga, Athe-Therm (Stainless Steel); Athe-Therm (Brass > 02/2005); ATS Stainless Steel; Bell & Gossett (Zone-valve), Beulco (> 2005); BHS; Bianchi 4-way-valve, 662 (1-way), 663 & 664 (3-way); Bianchi Brass (Series 332T, 401T, 403T); Böhnisch/SBK (> 1998), Broen (Ballorex Dynamic); Brugmann; Caleffi (with threads) & Series 670 (plastic); Cazzaniga; Chemidro; Comap HKV Modul (H); Cosmo (Objekt-Line) + (CMV manifold); CronaTech; Cufix; Cuprotherm;</p>	<p>Delphis-Therm, Dumser, Emcal (Stainless Steel > 03/2013); Emmeti; EQ-Therm FAR (> 2007); Formare (No. 80); Frank (> 2003); Fränkische; Frasa; Frese Optima (2,5 mm & 4,5 mm); Gampper (Typ: Vario C); GC-Verteiler; Gomacal; Heimeier; Herb; Herz (1 7762 xx, 1 7763 xx, 1 7760 xx, Series 'TS 98 VH'); Hesag/Herb (Verteiler Profi-Line); Honeywell & Braukmann, Honeywell (H) (Typ: V9050), V2020 (MNC), VSMF; IVAR; Jaga; Johnson Controls VG6210EC, VG6510EC, V5210KC, V5510KC; Jupiter; KaMo > 09/2005, Inox; KAN-Therm (Stainless Steel); Kermi; KWH Pipe; Landis & Gyr; Luxor CD; Mair (> 1998); Multibeton HKV (Strawa), > 1997; Multiblock; Nereus (Valves DN 10, DN20); Onda; Oventrop (Cocon, Cocon 4, Hycococon TM (DN25), Tri-D, Tri-M, QTZ, Q, uni LH, V3K; Stainless Steel, Hycococon TM (DN32)); Pantherm; Prandelli HKV; Purmo; RBM; RDZ Brass; Reich; Reliance Stainless Steel; Remo;</p>	<p>Roth DE (H) (Typ: Universal HK2); SAS Brass; Sauter BUT010 F400, BUT015 F210, BUT010 F410, VUT010 F200, F210, F220, VUT015 F210, VUL010 F330 & F340, VXL F200, F210, BXL F200 & F210, VXL F220, BUT015 F410; Schlösser (> 1993); Schütz; Seppelfricke; sht Siegmund; Siemens (Landis & Steafa) VPD 115A, VD 115CLC, VDN 215, VPI46, VPP46, VVI46, VXI46, VVP47, VXP47, VMP47; Simplex; SKV; Spartan V240; Strasshofer; Strawa; Taco (Vogel & Noot, Cosmo Stainless Steel); TECE Plastic, Stainless Steel (Strawa); Thermotech SE; Thermoval; Thermtec; Tiemme Series 'Floor TKM'; Tour & Andersson (> 1999), TBV-CM, TBV-CMP; Valvex Brass; Vescal (Metaplast); Viega Stainless Steel Fonterra, pro Radiant; VIR Series 9520; Vogel & Noot (Cosmo Brassverteiler); Watts (HKV-T, Vogel & Noot, Cosmo Objektline Finmetall, Myson); Wieland; Wittingsthal; Zehnder</p>
--	---	---

uponor