
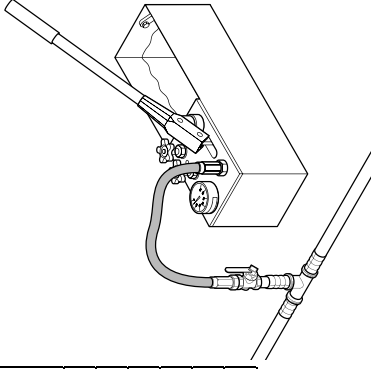
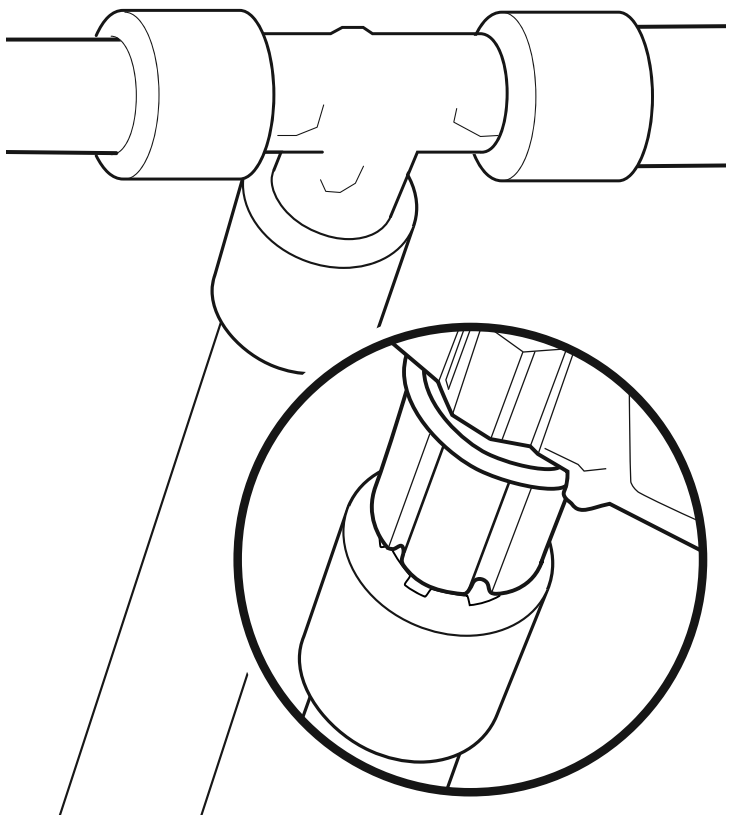
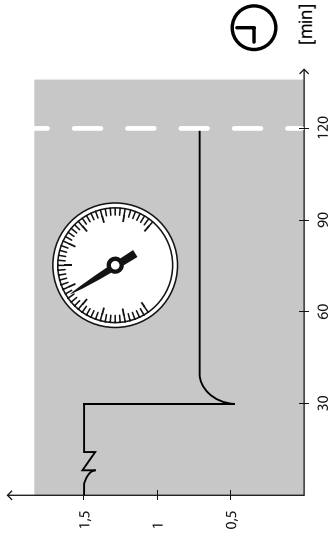
 °C	 h
>+10	0.1 - 0.25
+10 - +5	0.25 - 0.5
+5 - ±0	1.0 - 1.5
±0 - -5	2.0 - 3.0
-5 - -10	3.0 - 4.0
-10 - -15	7.0 - 8.0



[x operating pressure]



Uponor

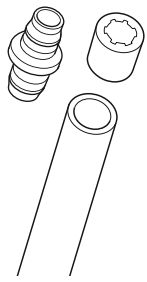
Uponor Q&E VLD Ø 40-75 mm

Uponor GmbH
Industriestraße 56
D-97437 Hassfurt
Germany

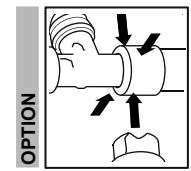
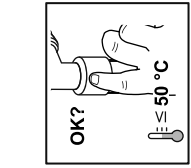
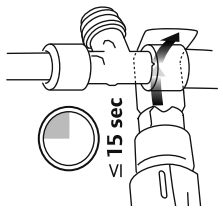
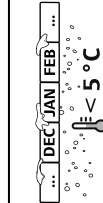
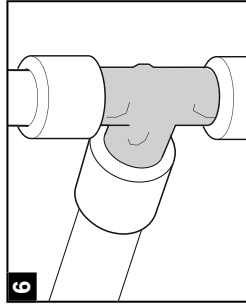
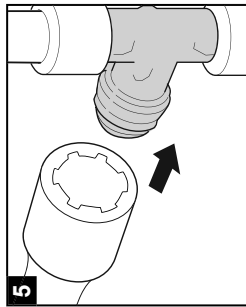
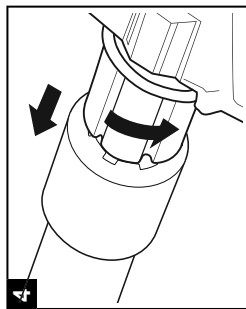
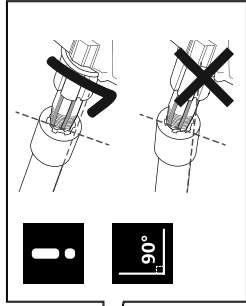
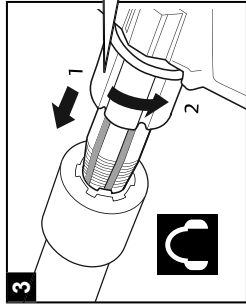
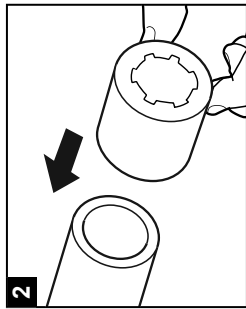
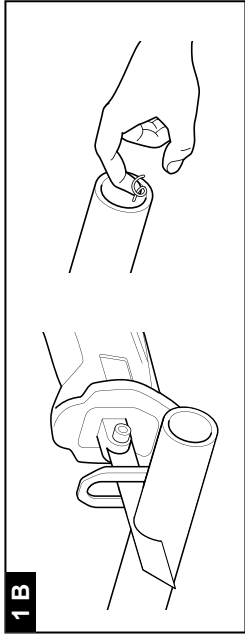
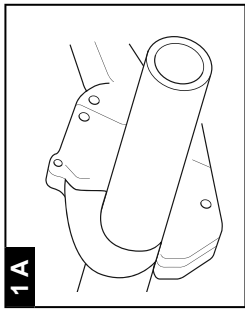


1087004_04/2016_EN

www.uponor.com



Uponor Aqua Pipe
Uponor Comfort Pipe



										21 °C	-10 °C

6 bar

40x3.7	40	Q&E40	Ø40x3.7/5.5 mm	3+1	3+1
50x4.6	50	Q&E50	Ø50x4.6/6.9 mm	3	3
63x5.8	63	Q&E63	Ø63x5.8/8.6 mm	4	3
75x6.8	75	Q&E75	Ø75x6.8/10.3 mm	7+1	7+1

10 bar

40x5.5	40	Q&E40	Ø40x3.7/5.5 mm	5+4	5+3
50x6.9	50	Q&E50	Ø50x4.6/6.9 mm	4+1	4+1
63x8.6	63	Q&E63	Ø63x5.8/8.6 mm	5+1	5
75x10.3	75	Q&E75	Ø75x6.8/10.3 mm	11+3	11+2