

COMPONENTS



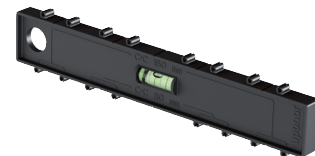
Uponor Q&E Termination Box, Rings M7
 1062936 PPSU 16-Rp½"FT 25/20
 1062931 DR 12-Rp½"FT 18/14,6
 1062932 NKB DR 15-Rp½"FT 25/20
 1062933 DR 16-Rp½"FT 25/20
 1062934 NKB DR 18-Rp½"FT 28/23
 1062935 DR 20-Rp½"FT 28/23



1062937
 Uponor Termination Box M7
 DR PEX 15x2,5-1/2"FT



1062958
 Uponor Leakage Indication Kit M7



1062946
 Uponor Mounting
 Tool with Spirit level M7



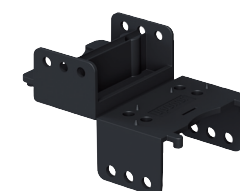
1059466
 Uponor Q&E Termination
 Box Cutting Tool M6/M7



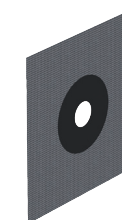
1062959
 Uponor Termination Box
 Extension M7



1062944
 Uponor Assembling/Pull out
 Tool M7 G½" MT



1062945
 Uponor Mounting
 Element M7



1067774
 Uponor Termination Box
 Wall Sealing Fabric

1063466
 Uponor Sealing Membrane
 for Conduit 25/20



Uponor Termination
 Box M7 - Drywall

INSTALLATION MANUAL

TUNNEL REPLACEMENT

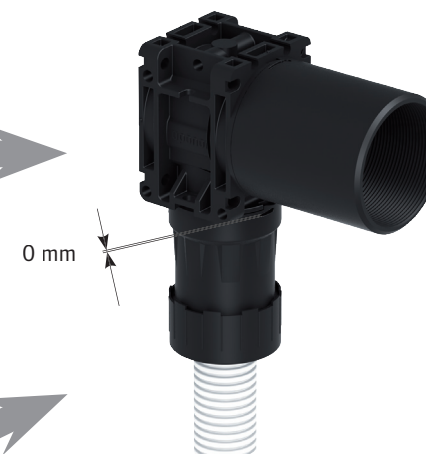


FITTING ASSEMBLY

Q&E 5DR, PPSU



FPL-PX



Uponor reserves the right to change specifications without prior notice.
 in keeping with our policy of continuous improvement and development.

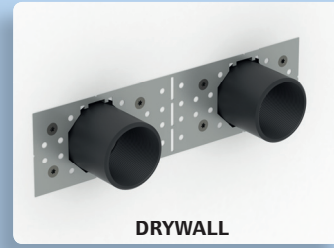
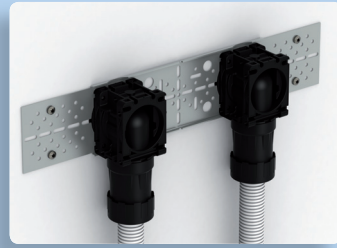
Following products and tools are strictly
 forbidden with Q&E PPSU products

- Ever Seal Thread 483
- Loctite 518, Loctite 542
- Scotch-Grip Rubber 1300
- Scotch-Grip Rubber 2141
- Scotch-Grip Rubber 847
- Rector Seal 5
- Rite-Lock, Selet Unyte
- Leakage spray
- Flax, hemp
- Multiple pliers
- Pipe wrench

Following products are recommended
 with Q&E PPSU products

- PTFE tapes according to EN 751-3 FRp
- Loctite 5061, Loctite 5331
- Loctite 516, Loctite 55

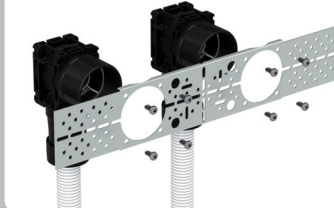
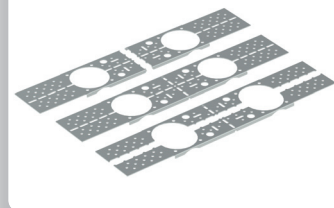
ASSEMBLY



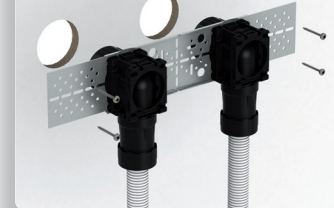
ALT. 1



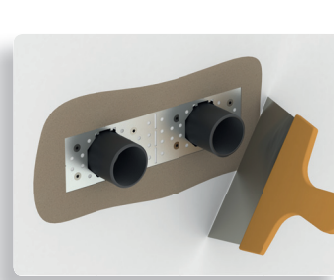
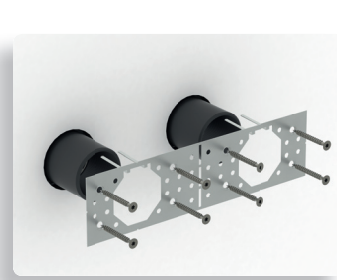
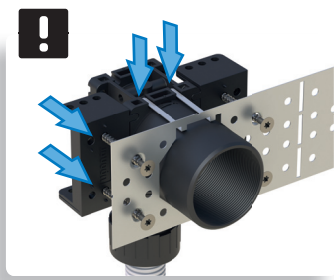
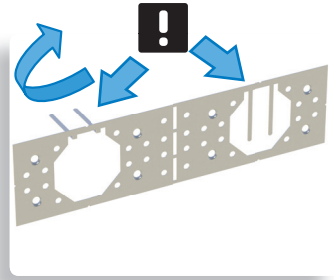
ALT. 2



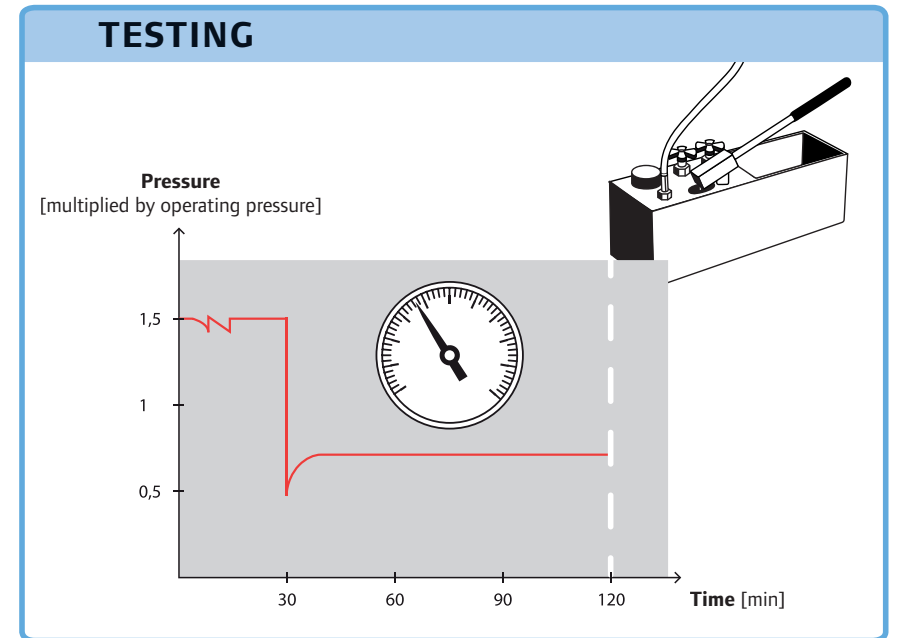
OR



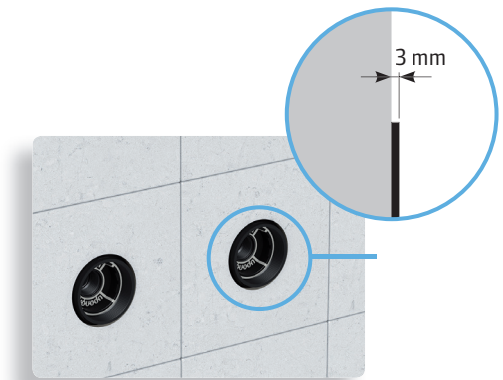
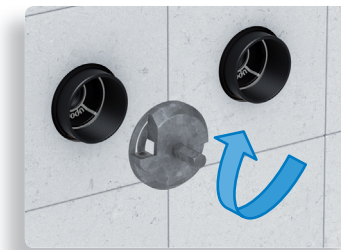
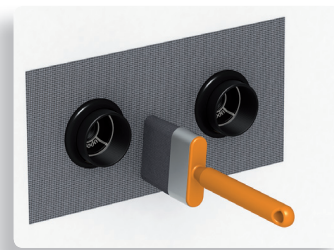
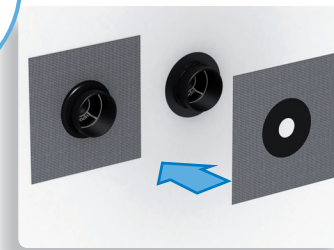
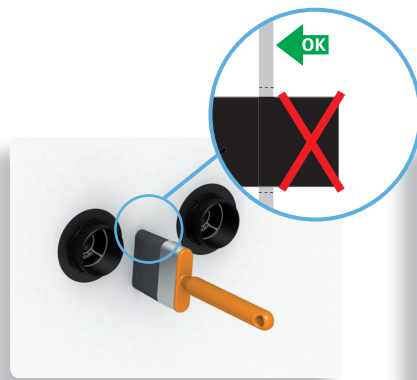
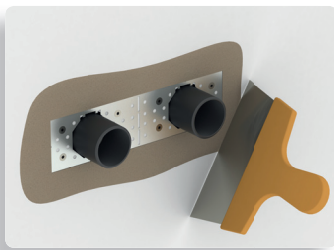
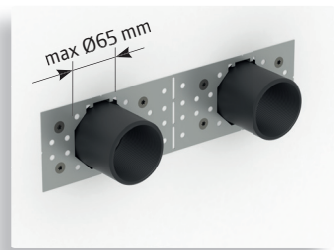
ALT. 3



TESTING



FOIL OR DISPERSION SYSTEM



DISASSEMBLY

