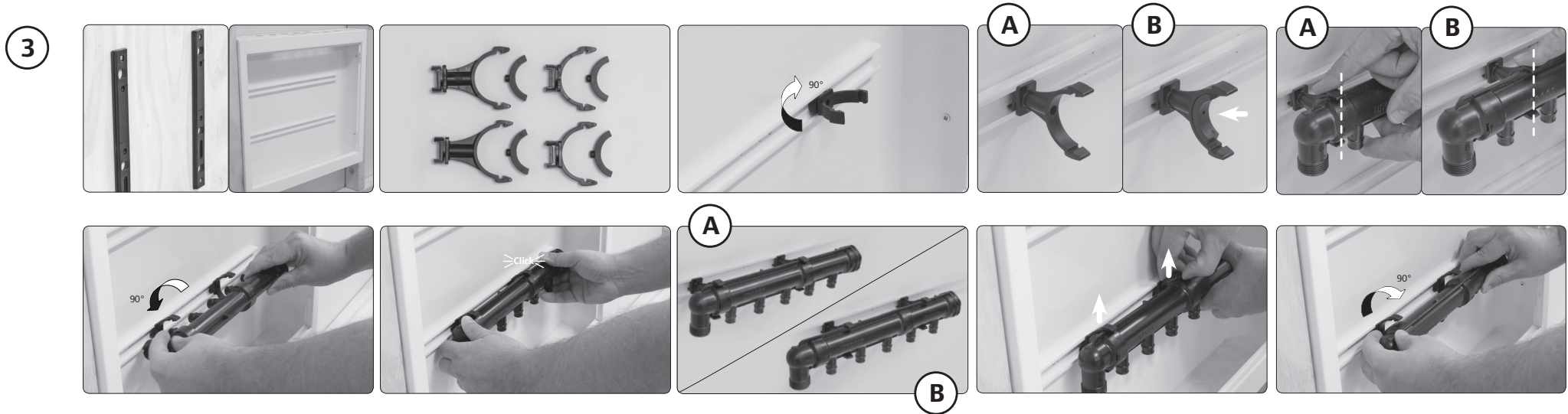
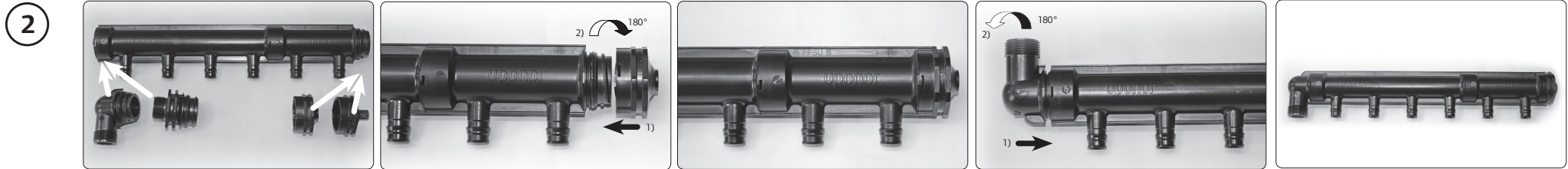
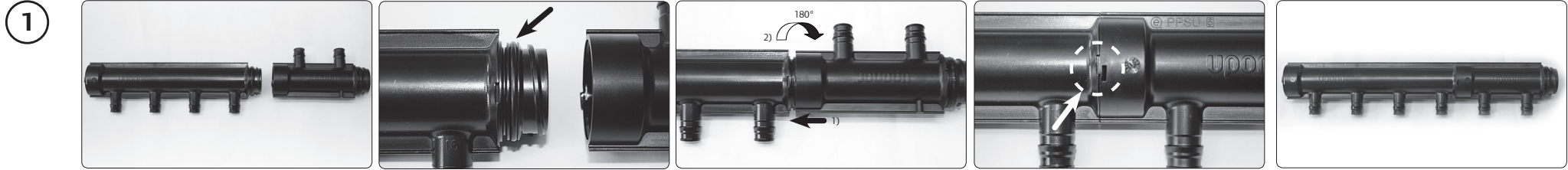
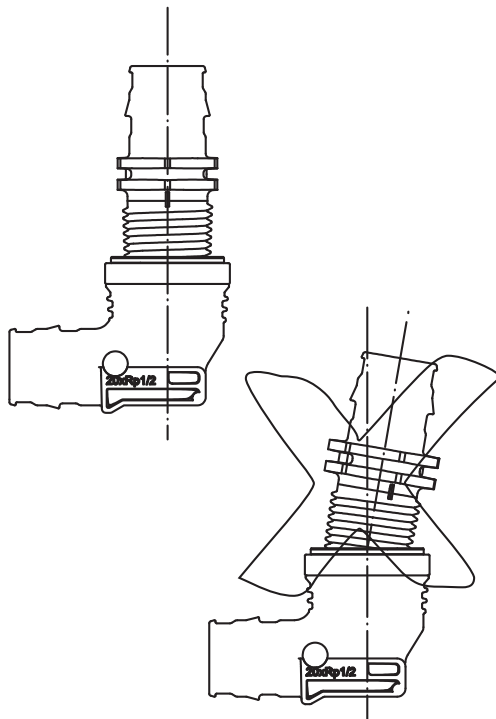
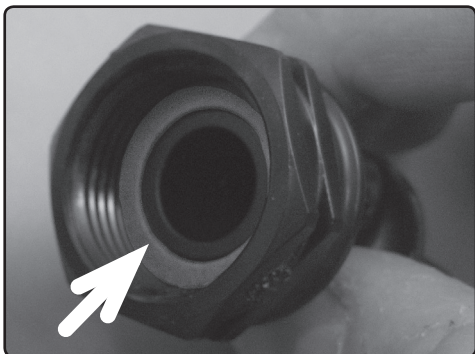
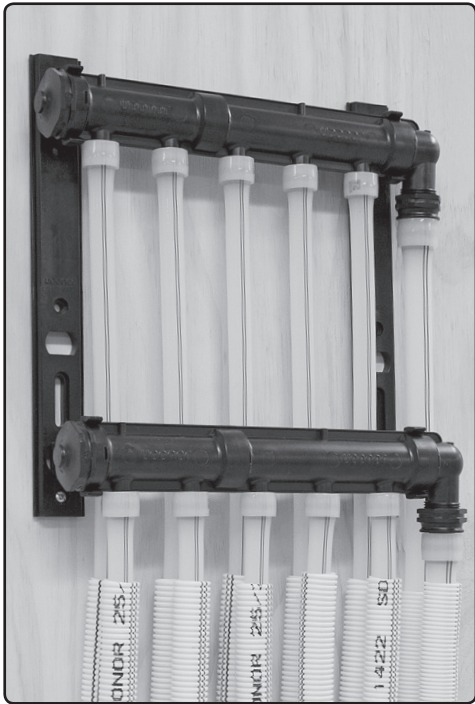


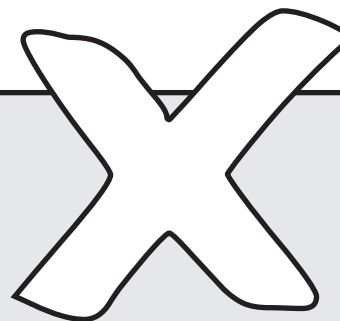
Installation instruction • Installationsanvisning • Monteringsanvisning • Installationsvejledning • Asennusohjeet





PTFE tapes according to EN 751-3 FRp  
 Loctite 5061, Loctite 5331  
 Loctite 516, Loctite 55

Ever Seal Thread 483,  
 Loctite 518, Loctite 542  
 Scotch-Grip Rubber 1300,  
 Scotch-Grip Rubber 2141  
 Scotch-Grip Rubber 847,  
 Rector Seal 5  
 Rite-Lock, Selet Unyte



- Esters (e.g. ethylacetate)
- Aceton Methylene Chloride
- Trichlorethylene
- Cyclohexanone
- Chlorobenzen
- Tetrachlorethylene
- Tetrachlorethane Toulene
- Xylene
- Benzene

**Uonodn**

Uponor Suomi Oy  
 Lämitys- ja käyttövesiyksikkö  
 Puh 020 129 211/keskus  
 www.uponor.fi

Uponor A/S  
 Telefon 43 26 34 00  
 www.uponor.dk

Uponor AS  
 Tlf. 64 95 66 00  
 www.uponor.no

Uponor AB  
 Tel 0223-380 00  
 www.uponor.se

Uponor AB  
 Tel +46 (0)223 380 00  
 www.uponor.com

In keeping with our policy of continuous improvement and development, Uponor reserves the right to change specifications without prior notice.

**uponor**

**Uponor Plastics  
 Plumbing Manifold**

INSTALLATION INSTRUCTION  
 INSTALLATIONSANVISNING  
 MONTERINGSANVISNING  
 INSTALLATIONSVEJLEDNING  
 ASENNUSOHJEET