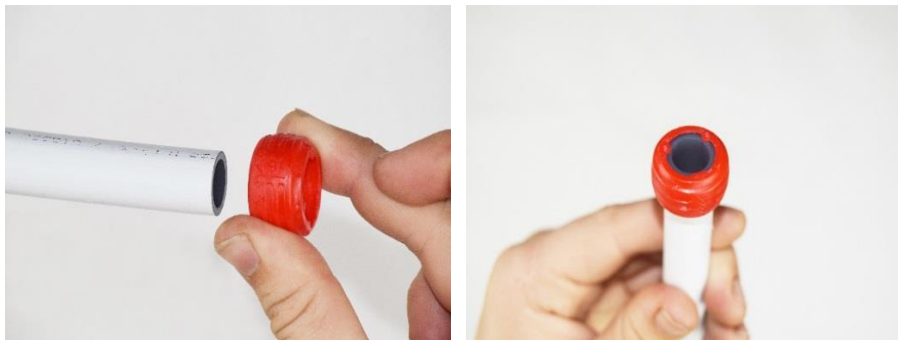


Create a Quick and Easy joint in 6 short steps

1. Select the correct colour Q&E Evolution ring



2. Insert the pipe into the Evolution ring until the pipe reaches the stops on the inner edge of the ring



3. Insert the end of the tool's expander head inside the pipe



4. Pull the trigger of the tool which will begin the expansions. The tool will automatically open and close the expander head. With very light pressure holding the pipe on the expander head, allow the pipe to move down the expander head each time the head closes, until the ring sits comfortably against the shoulder of the expander head. This should take 4 or 5 expansions



5. Remove the tool from the end of the pipe, and immediately insert the Q&E fitting, pushing the pipe until the ring sits against the pipe stop



6. The pipe and ring will now contract around the Q&E fitting and the joint will be watertight in around 10 – 15 seconds



If you require any further information about Uponor's Quick and Easy solution, please email marketing.uk@uponor.com or phone 01923 927000