

## Uponor Comfort E Cable Mat

### System description

Electrical radiant heating roll out mats as embedded floor heating under all floorings in particulat tiles, 160 W/m<sup>2</sup>

- 3mm shielded double core cable with 4m cold connector
- Heating conductor with FEP electrical isolation
- 4.000 M Ohm - Insulation Resistance
- Cable sew up on self attaching carrier mat; 0,5 m wide
- Incl. protection tube for the floor sensor
- IPX7 - CE / VDE approved

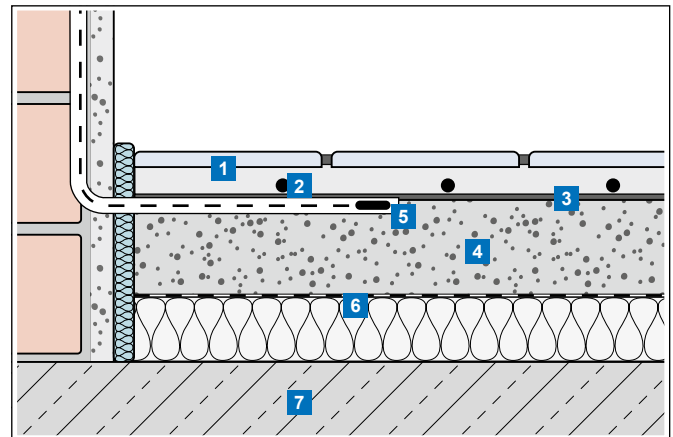
to use for Renovation & new build wet floor construction e.g. bathrooms with tiles

### Technical specifications

Uponor Comfort E cable mat	
Nominal voltage	230 V, AC
Rated capacity	160 W/m <sup>2</sup>
Circuit breaker <sup>1)</sup> with C-Characteristics	Max. 16 A
Min. bending radius	30 mm
Min. installation distance	60 mm
Max. operating temperature	+90 °C
Min. installation temperature	+5 °C
Conductor cross section of the connection cable	3 x 0,75 mm <sup>2</sup>
Lenght of the connection cable	4,0 m
Approvals	VDE, CE

<sup>1)</sup> When several heating mats are connected to a fuse box, the total connection current of the mats is limited to max. 16 A.

### Floor construction (Example)



- 1 Tile adhesives with tiles
- 2 Uponor Comfort E heating mats
- 3 Optional: primer, filler
- 4 Screed
- 5 Floor sensor in protective tube
- 6 Insulation layer with insulation layer cover
- 7 Load-bearing substrate (eg concrete)

### Important!

The Uponor Thermostat T-871F will switch 10 A. Any combination of mats or cables can be connected as long as the total load does not exceed this value.

Heating mat type	Laying area (m <sup>2</sup> )	Heating mat length (m)	Heating mat capacity (W)	Heating mat resistance <sup>1)</sup> (Ω)
UPONOR COMFORT E CABLE MAT 160-1	1	2	160	329
UPONOR COMFORT E CABLE MAT 160-1,5	1,5	3	240	224
UPONOR COMFORT E CABLE MAT 160-2	2	4	320	171
UPONOR COMFORT E CABLE MAT 160-2,5	2,5	5	400	132
UPONOR COMFORT E CABLE MAT 160-3	3	6	480	107
UPONOR COMFORT E CABLE MAT 160-4	4	8	640	85
UPONOR COMFORT E CABLE MAT 160-5	5	10	800	69
UPONOR COMFORT E CABLE MAT 160-6	6	12	960	55
UPONOR COMFORT E CABLE MAT 160-7	7	14	1120	48
UPONOR COMFORT E CABLE MAT 160-8	8	16	1280	42
UPONOR COMFORT E CABLE MAT 160-10	10	20	1600	33
UPONOR COMFORT E CABLE MAT 160-12	12	24	1920	28

<sup>1)</sup> Tolerance -5% to +10%

