

Comfort E AL-Foil Mat

System description

Electrical radiant heating AL-Foil roll out mats under removable floorings like parquet, laminate or carpet, 140 W/m²

- Double core cable with AL-Foil; 0,5 m wide with 3 m cold connector and AL-tapes
- Heating conductor with FEP electrical isolation
- Incl. protection tube for the floor sensor
- IPX7 - CE

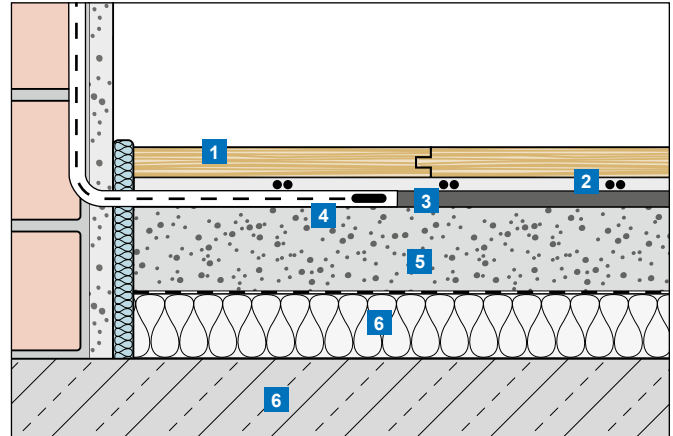
to use for Renovation & new build dry floor construction e.g. living rooms

Technical specifications

Uponor Comfort E AL-FOIL MAT	
Nominal voltage	230 V, AC
Rated capacity	140 W/m ²
Circuit breaker ¹⁾ with C-Characteristics	Max. 16 A
Min. bending radius	30 mm
Min. installation distance	60 mm
Max. operating temperature	+90 °C
Min. installation temperature	+5 °C
Conductor cross section of the connection cable	3 x 0,75 mm ²
Length of the connection cable	3,0 m
Approvals	CE

¹⁾ When several heating mats are connected to a fuse box, the total connection current of the mats is limited to max. 16 A.

Floor construction (Example)



- 1 Flooring (e.g. parquet, laminate)
- 2 Uponor Comfort E AL-foil mats (ca. 2 mm)
- 3 Uponor Comfort E AL-Folie insulation board (5 mm)
- 4 Floor sensor in protective tube
- 5 Existing screed
- 6 Insulation layer with PE foil covering
- 7 Load-bearing substrate (e.g. concrete)

Important!

The Uponor Thermostat T-871F will switch 10 A. Any combination of mats or cables can be connected as long as the total load does not exceed this value.

Heating mat type	Laying area (m ²)	Heating mat length (m)	Heating mat capacity (W)	Heating mat resistance ¹⁾ (Ω)
UPONOR COMFORT E AL-FOIL MAT 140-1	1	2	140	378
UPONOR COMFORT E AL-FOIL MAT 140-2	2	4	280	189
UPONOR COMFORT E AL-FOIL MAT 140-3	3	6	420	126
UPONOR COMFORT E AL-FOIL MAT 140-4	4	8	560	94
UPONOR COMFORT E AL-FOIL MAT 140-5	5	10	700	76
UPONOR COMFORT E AL-FOIL MAT 140-6	6	12	840	63
UPONOR COMFORT E AL-FOIL MAT 140-7	7	14	980	54
UPONOR COMFORT E AL-FOIL MAT 140-8	8	16	1120	47
UPONOR COMFORT E AL-FOIL MAT 140-9	9	18	1260	42
UPONOR COMFORT E AL-FOIL MAT 140-10	10	20	1400	38

¹⁾ Tolerance -5% to +10%

