

Collecteurs à vanne ProPEX (type L) en cuivre sans plomb (LF)

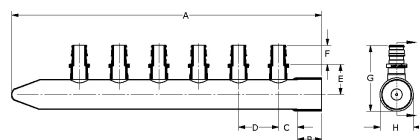


Renseignements sur le projet

| | |
|-----------------------------|---------------------|
| Nom du poste : | Lieu : |
| Ingénieur : | Date de soumission: |
| Entrepreneur : | Présentée par: |
| Représentant du fabricant : | Approuvé par : |

Données techniques

| | |
|-------------------------|--|
| Material | Copper |
| Manifold size | 1 inch |
| End type 1 | ProPEX 1/2" |
| Temp/pressure ratings | 73 °F (23 °C) at 160 psi (11 bar) 180 °F (82 °C) at 100 psi (6.9 bar) 200 °F (93 °C) at 80 psi (5.5 bar) 210 °F (99 °C) at 149 psi (10.3 bar) |
| Max. fluid flow rate | 21 gpm |
| Prop 65 label required? | Yes |



Informations sur le produit et utilisation de l'application

Uponor's 1" Copper Manifold with Lead-free Brass 1/2" ProPEX® Ball Valve provides simple and easy isolation of individual loops. 1 Sections can sweat together to extend the number of outlets using a standard 1" copper coupling. Both 1" ends are copper pipe size and require a copper end cap, coupling or transition fitting to make the proper system connection. Do not exceed accepted flow rates for 1" nominal copper.

Note: Temperature and pressure ratings stated are hydrostatic ratings. For domestic hot-water (DHW) and DHW recirculation installations, operating conditions should not exceed 140°F (60°C) at 80 psi (5.5 bar) in accordance with ASTM F2023. For additional information regarding application-specific temperature and pressure ratings, refer to the Uponor PEX Piping Systems Design and Installation Manual.

| Nom de la pièce | Numéro de pièce | A [inch] | B [inch] | C [inch] | D [inch] | E [inch] | F [inch] | G [inch] | H [inch] | Weight per UOM [lbs/UOM] |
|---|-----------------|----------|----------|----------|----------|----------|----------|----------|----------|--------------------------|
| 1" Copper Manifold with LF Brass 1/2" ProPEX Ball Valve, 4 outlets | LF2500400 | 7.5 | 0 | 1.5 | 1.5 | 2.698 | 0.709 | 3.97 | 1.653 | 1.65 |
| 1" Copper Manifold with LF Brass 1/2" ProPEX Ball Valve, 6 outlets | LF2500600 | 10.5 | 0 | 1.5 | 1.5 | 2.698 | 0.709 | 3.97 | 1.653 | 2.6 |
| 1" Copper Manifold with LF Brass 1/2" ProPEX Ball Valve, 8 outlets | LF2500800 | 13.5 | 0 | 1.5 | 1.5 | 2.698 | 0.709 | 3.97 | 1.653 | 3.4 |
| 1" Copper Manifold with LF Brass 1/2" ProPEX Ball Valve, 10 outlets | LF2501000 | 16.5 | 0 | 1.5 | 1.5 | 2.698 | 0.709 | 3.97 | 1.653 | 4.2 |
| 1" Copper Manifold with LF Brass 1/2" ProPEX Ball Valve, 12 outlets | LF2501200 | 19.5 | 0 | 1.5 | 1.5 | 2.698 | 0.709 | 3.97 | 1.653 | 4.85 |

| Nom de la pièce | Numéro de pièce | Les codes | Normes | Annonces |
|---|-----------------|--|--|--|
| Collecteurs à vanne ProPEX (type L) en cuivre sans plomb (LF) | All | UPC IBC IRC IPC NPC of Canada UMC NSPC IMC | ASTM F877 ASTM F1960 CSA B137.5 | IAPMO-ES ICC-ES-PMG cNSFus-pw-G U.P.Code |
| In addition, the following parts have additional codes, standards, or listings: | | | | |
| 1" Copper Manifold with LF Brass 1/2" ProPEX Ball Valve, 4 outlets | LF2500400 | | NSF/ANSI/CAN 372 NSF/ANSI/CAN 61 NSF/ANSI 14 | |
| 1" Copper Manifold with LF Brass 1/2" ProPEX Ball Valve, 6 outlets | LF2500600 | | NSF/ANSI/CAN 372 NSF/ANSI/CAN 61 NSF/ANSI 14 | |
| 1" Copper Manifold with LF Brass 1/2" ProPEX Ball Valve, 8 outlets | LF2500800 | | NSF/ANSI/CAN 372 NSF/ANSI/CAN 61 NSF/ANSI 14 | |
| 1" Copper Manifold with LF Brass 1/2" ProPEX Ball Valve, 10 outlets | LF2501000 | | NSF/ANSI/CAN 372 NSF/ANSI/CAN 61 NSF/ANSI 14 | |
| 1" Copper Manifold with LF Brass 1/2" ProPEX Ball Valve, 12 outlets | LF2501200 | | NSF-372 NSF-61 NSF-14 | |

L'installation

The installer can use any product designed to mount 1" copper pipe as a mounting bracket. Any bend within 6 inches of the ProPEX connection to the manifold requires the use of a Tube Talon (F7050750) or Bend Support (A5110500 and A5150500). Refer to the AquaPEX® Professional Plumbing Installation Guide for additional information.

Applications connexes

PEX-a Plumbing Systems

Remarques :

Flow at 4 fps: 10.2 gpm

Notes de bas de page

Coordonnées de la personne-ressource

Uponor Inc.
5925 148th Street West
Apple Valley, MN 55124
T 800.321.4739
F 952.891.2008

Uponor Ltd.
6510 Kennedy Road
Mississauga, ON L5T 2X4
T 888.594.7726
F 800.638.9517