

# Adaptateurs ProPEX pour raccord de compression sur tube en cuivre en laiton sans plomb (LF)



## Renseignements sur le projet

Nom du poste :	Lieu :
Ingénieur :	Date de soumission:
Entrepreneur :	Présentée par:
Représentant du fabricant :	Approuvé par :

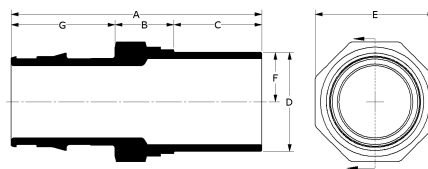
## Données techniques

Material	LF Brass
Temp/pressure ratings	73 °F (23 °C) at 160 psi (11 bar) 180 °F (82 °C) at 100 psi (6.9 bar) 200 °F (93 °C) at 80 psi (5.5 bar)
Prop 65 label required?	Yes

## Informations sur le produit et utilisation de l'application

Uponor ProPEX®1 lead-free (LF) brass copper press fitting adapters transition copper fittings to Uponor PEX. The adapters are approved for use in hot and cold potable water and hydronic heating and cooling systems.

Note: Temperature and pressure ratings stated are hydrostatic ratings. For domestic hot-water (DHW) and DHW recirculation installations, operating conditions should not exceed 140°F (60°C) at 80 psi (5.5 bar) in accordance with ASTM F2023. For additional information regarding application-specific temperature and pressure ratings, refer to the Uponor PEX Piping Systems Design and Installation Manual.



Nom de la pièce	Numéro de pièce	A [inch]	B [inch]	C [inch]	D [inch]	E [inch]	F [inch]	G [inch]	Cv	Equivalent length through [ft]	End Type 1
ProPEX LF Brass Copper Press Fitting Adapter, 1/2" PEX x 1/2" Copper	LFP4505050	2.009	0.553	0.748	0.624	0.906	0.312	0.709	5.6	2.1	ProPEX 1/2"
ProPEX LF Brass Copper Press Fitting Adapter, 3/4" PEX x 3/4" Copper	LFP4507575	2.404	0.593	0.866	0.874	1.083	0.437	0.945	12.8	2.4	ProPEX 3/4"
ProPEX LF Brass Copper Press Fitting Adapter, 1" PEX x 1" Copper	LFP4501010	2.851	0.67	1	1.125	1.358	0.563	1.181	21.4	3.1	ProPEX 1"
ProPEX LF Brass Copper Press Fitting Adapter, 1 1/4" PEX x 1 1/4" Copper	LFP4501313	3.289	0.769	1.075	1.374	1.634	0.687	1.445	31.5	4.7	ProPEX 1-1/4"
ProPEX LF Brass Copper Press Fitting Adapter, 1 1/2" PEX x 1 1/2" Copper	LFP4501515	3.88	0.739	1.437	1.625	1.85	0.813	1.704	43.5	4.8	ProPEX 1-1/2"
ProPEX LF Brass Copper Press Fitting Adapter, 2" PEX x 2" Copper	LFP4502020	4.65	0.929	1.575	2.125	2.559	1.063	2.147	81.5	5.61	ProPEX 2"
ProPEX LF Brass Copper Press Fitting Adapter, 2 1/2" PEX x 2 1/2" Copper	LFP4502525	5.85	1.406	1.614	2.624	3.15	1.312	2.83	137	6.89	ProPEX 2-1/2"
ProPEX LF Brass Copper Press Fitting Adapter, 3" PEX x 3" Copper	LFP4503030	6.671	1.48	1.811	3.125	3.622	1.563	3.38	187.1	9.4	ProPEX 3"

Nom de la pièce	Numéro de pièce	End Type 2	Weight per UOM [lbs/UOM]
ProPEX LF Brass Copper Press Fitting Adapter, 1/2" PEX x 1/2" Copper	LFP4505050	Copper Press 1/2"	0.1
ProPEX LF Brass Copper Press Fitting Adapter, 3/4" PEX x 3/4" Copper	LFP4507575	Copper Press 3/4"	0.16
ProPEX LF Brass Copper Press Fitting Adapter, 1" PEX x 1" Copper	LFP4501010	Copper Press 1"	0.26
ProPEX LF Brass Copper Press Fitting Adapter, 1 1/4" PEX x 1 1/4" Copper	LFP4501313	Copper Press 1-1/4"	0.44
ProPEX LF Brass Copper Press Fitting Adapter, 1 1/2" PEX x 1 1/2" Copper	LFP4501515	Copper Press 1-1/2"	0.62
ProPEX LF Brass Copper Press Fitting Adapter, 2" PEX x 2" Copper	LFP4502020	Copper Press 2"	1.3
ProPEX LF Brass Copper Press Fitting Adapter, 2 1/2" PEX x 2 1/2" Copper	LFP4502525	Copper Press 2-1/2"	2.66
ProPEX LF Brass Copper Press Fitting Adapter, 3" PEX x 3" Copper	LFP4503030	Copper Press 3"	3.58

Nom de la pièce	Numéro de pièce	Les codes	Normes	Annonces
Adaptateurs ProPEX pour raccord de compression sur tube en cuivre en laiton sans plomb (LF)	All	UPC IBC IRC IPC NPC of Canada UMC NSPC IMC	ASME B16.51 IAPMO PS 117 ASTM F877 ICC-ES LC1002 ASTM F1960 CSA B137.5	IAPMO-ES cNSFus-pw-G U.P.Code ICC-PMG-1412
In addition, the following parts have additional codes, standards, or listings:				
ProPEX LF Brass Copper Press Fitting Adapter, 1/2" PEX x 1/2" Copper	LFP4505050		NSF-372 NSF-61 NSF-14	
ProPEX LF Brass Copper Press Fitting Adapter, 3/4" PEX x 3/4" Copper	LFP4507575		NSF-372 NSF-61 NSF-14	
ProPEX LF Brass Copper Press Fitting Adapter, 1" PEX x 1" Copper	LFP4501010		NSF/ANSI/CAN 372 NSF/ANSI/CAN 61 NSF/ANSI 14	
ProPEX LF Brass Copper Press Fitting Adapter, 1 1/4" PEX x 1 1/4" Copper	LFP4501313		NSF/ANSI/CAN 372 NSF/ANSI/CAN 61 NSF/ANSI 14	
ProPEX LF Brass Copper Press Fitting Adapter, 1 1/2" PEX x 1 1/2" Copper	LFP4501515		NSF/ANSI/CAN 372 NSF/ANSI/CAN 61 NSF/ANSI 14	
ProPEX LF Brass Copper Press Fitting Adapter, 2" PEX x 2" Copper	LFP4502020		NSF/ANSI/CAN 372 NSF/ANSI/CAN 61 NSF/ANSI 14	
ProPEX LF Brass Copper Press Fitting Adapter, 2 1/2" PEX x 2 1/2" Copper	LFP4502525		NSF/ANSI/CAN 372 NSF/ANSI/CAN 61 NSF/ANSI 14	
ProPEX LF Brass Copper Press Fitting Adapter, 3" PEX x 3" Copper	LFP4503030		NSF-372 NSF-61 NSF-14	

L'installation	Applications connexes
Use ProPEX tool and ProPEX rings (sold separately) for connecting the PEX pipe. For more information, refer to the Uponor Piping Pocket Guide. Follow press tool manufacturers' install instructions for the male or female press end of the adapter.	PEX-a Plumbing Systems Hydronic heating and cooling systems Permafrost Protection Systems

Notes de bas de page	Coordonnées de la personne-ressource	
-	Uponor Inc. 5925 148th Street West Apple Valley, MN 55124 T 800.321.4739 F 952.891.2008	Uponor Ltd. 6510 Kennedy Road Mississauga, ON L5T 2X4 T 888.594.7726 F 800.638.9517