

# Coudes pour plinthe ProPEX

## Renseignements sur le projet

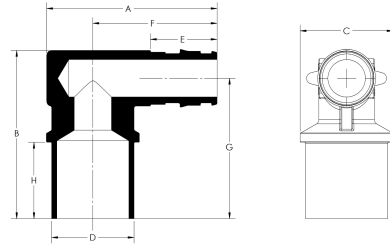
Nom du poste :	Lieu :
Ingénieur :	Date de soumission:
Entrepreneur :	Présentée par:
Représentant du fabricant :	Approuvé par :

## Données techniques

Material	Brass
End type 2	Sweat 3/4"
Temp/pressure ratings	73 °F (23 °C) at 160 psi (11 bar) 180 °F (82 °C) at 100 psi (6.9 bar) 200 °F (93 °C) at 80 psi (5.5 bar)
Prop 65 label required?	Yes

## Informations sur le produit et utilisation de l'application

The Uponor ProPEX® Baseboard Tee Copper Adapter can be used in any heating system applying the use of fin-tube baseboard or unit-type heaters. 1 One end of the tee adapter features a ProPEX fitting for an easy transition from copper pipe to Wirsbo hePEXTM tubing or Uponor AquaPEX® tubing.



Nom de la pièce	Numéro de pièce	A [inch]	B [inch]	C [inch]	D [inch]	E [inch]	F [inch]	G [inch]	H [inch]	End Type 1	Weight per UOM [lbs/UOM]
ProPEX Baseboard Elbow, 1/2" PEX x 3/4" Copper Adapter	Q4385075	1.81	1.796	0.987	0.872	0.709	1.32	1.489	0.75	ProPEX 1/2"	-
ProPEX Baseboard Elbow, 5/8" PEX x 3/4" Copper Adapter	Q4386375	1.861	0.372	1.489	0.614	0.866	1.974	1.04	0.75	ProPEX 5/8"	0.17
ProPEX Baseboard Elbow, 3/4" PEX x 3/4" Copper Adapter	Q4387575	1.924	0.435	1.489	0.615	0.945	2.054	1.2	0.75	ProPEX 3/4"	0.36
ProPEX Baseboard Elbow, 1/2" PEX x 3/4" Copper Fitting Adapter	Q4375075	1.81	1.796	0.987	0.869	0.709	1.32	1.489	0.81	ProPEX 1/2"	0.16
ProPEX Baseboard Elbow, 5/8" PEX x 3/4" Copper Fitting Adapter	Q4376375	2.03	1.861	1.04	0.874	0.866	1.48	1.489	0.81	ProPEX 5/8"	0.19
ProPEX Baseboard Elbow, 3/4" PEX x 3/4" Copper Fitting Adapter	Q4377575	2.13	1.924	1.2	0.868	0.945	1.56	1.489	0.81	ProPEX 3/4"	-

Nom de la pièce	Numéro de pièce	Les codes	Normes	Annonces
Coudes pour plinthe ProPEX	All	IMC	ASTM F1960 CSA B137.5 ASTM F877	IAPMO-ES ICC-ES-PMG cNSFus-rfh
In addition, the following parts have additional codes, standards, or listings:				
ProPEX Baseboard Elbow, 1/2" PEX x 3/4" Copper Adapter	Q4385075		NSF/ANSI 14	
ProPEX Baseboard Elbow, 5/8" PEX x 3/4" Copper Adapter	Q4386375		NSF-14	
ProPEX Baseboard Elbow, 3/4" PEX x 3/4" Copper Adapter	Q4387575		NSF-14	
ProPEX Baseboard Elbow, 1/2" PEX x 3/4" Copper Fitting Adapter	Q4375075		NSF/ANSI 14	
ProPEX Baseboard Elbow, 5/8" PEX x 3/4" Copper Fitting Adapter	Q4376375		NSF/ANSI 14	
ProPEX Baseboard Elbow, 3/4" PEX x 3/4" Copper Fitting Adapter	Q4377575		NSF/ANSI 14	

## L'installation

Use the appropriate ProPEX Ring for tubing (sold separately). Do not solder within 18 inches of the ProPEX connection. Refer to the Uponor Radiant Floor Heating Installation Handbook for additional information.

## Applications connexes

- Radiant Heating and Cooling Systems
- Permafrost Protection Systems
- Turf Conditioning Systems
- AquaSAFE™ Fire Safety Systems

Uponor Inc.  
5925 148th Street West  
Apple Valley, MN 55124  
T 800.321.4739  
F 952.891.2008

Uponor Ltd.  
6510 Kennedy Road  
Mississauga, ON L5T 2X4  
T 888.594.7726  
F 800.638.9517

---