

Ensembles de raccords ProPEX pour collecteur

Renseignements sur le projet

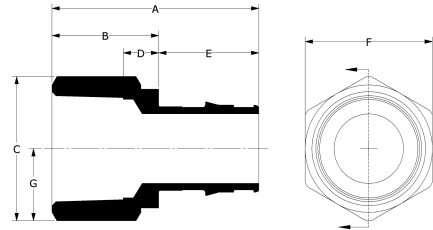
| | |
|-----------------------------|---------------------|
| Nom du poste : | Lieu : |
| Ingénieur : | Date de soumission: |
| Entrepreneur : | Présentée par: |
| Représentant du fabricant : | Approuvé par : |

Données techniques

Material Brass
 Prop 65 label required? Yes

Informations sur le produit et utilisation de l'application

The Uponor ProPEX® Fitting Assembly threads onto Uponor manifold loop outlets.1 The fitting features an R20 or R25 thread with a ProPEX connection to connect Uponor crosslinked polyethylene (PEX) tubing to the manifold in radiant heating and cooling applications.



| Nom de la pièce | Numéro de pièce | A [inch] | B [inch] | C [inch] | D [inch] | E [inch] | F [inch] | G [inch] | End Type 1 | End Type 2 | Operating Temperature 1 [°F] |
|--|-----------------|----------|----------|----------|----------|----------|----------|----------|-------------|----------------|------------------------------|
| 3/8" ProPEX Fitting Assembly, R20 Thread | Q4020375 | 1.196 | 0.605 | 1.368 | 0.285 | 0.591 | 1.187 | 0.684 | ProPEX 3/8" | ISO 228-G 3/4" | 73 |
| 1/2" ProPEX Fitting Assembly, R20 Thread | Q4020500 | 1.321 | 0.612 | 1.368 | 0.285 | 0.709 | 1.187 | 0.684 | ProPEX 1/2" | ISO 228-G 3/4" | - |
| 5/8" ProPEX Fitting Assembly, R20 Thread | Q4020625 | 1.468 | 0.602 | 1.368 | 0.285 | 0.866 | 1.187 | 0.684 | ProPEX 5/8" | ISO 228-G 3/4" | - |
| 3/4" ProPEX Fitting Assembly, R20 Thread | Q4020750 | 1.55 | 0.605 | 1.368 | 0.285 | 0.945 | 1.187 | 0.684 | - | - | - |
| 5/8" ProPEX Fitting Assembly for Commercial Manifold, R25 thread | Q4050625 | 1.634 | 0.768 | 1.729 | 0.275 | 0.866 | 1.5 | - | ProPEX 5/8" | ISO 228-G 1" | 73 |
| 3/4" ProPEX Fitting Assembly for Commercial Manifold, R25 thread | Q4050750 | 1.713 | 0.768 | 1.729 | 0.275 | 0.945 | 1.5 | - | ProPEX 3/4" | ISO 228-G 1" | 73 |
| 1" ProPEX Fitting Assembly for Commercial Manifold, R25 thread | Q4051000 | 1.949 | 0.768 | 1.729 | 0.275 | 1.181 | 1.5 | - | ProPEX 1" | ISO 228-G 1" | 73 |

| Nom de la pièce | Numéro de pièce | Operating Temperature 2 [°F] | Operating Temperature 3 [°F] | Cv | Equivalent length through [ft] | Weight per UOM [lbs/UOM] |
|--|-----------------|------------------------------|------------------------------|-------|--------------------------------|--------------------------|
| 3/8" ProPEX Fitting Assembly, R20 Thread | Q4020375 | 180 | 200 | - | - | 0.18 |
| 1/2" ProPEX Fitting Assembly, R20 Thread | Q4020500 | - | - | - | - | 0.18 |
| 5/8" ProPEX Fitting Assembly, R20 Thread | Q4020625 | - | - | - | - | 0.2 |
| 3/4" ProPEX Fitting Assembly, R20 Thread | Q4020750 | - | - | - | - | 0.19 |
| 5/8" ProPEX Fitting Assembly for Commercial Manifold, R25 thread | Q4050625 | 180 | 200 | 7.75 | 4.13 | 0.37 |
| 3/4" ProPEX Fitting Assembly for Commercial Manifold, R25 thread | Q4050750 | 180 | 200 | 12.07 | 3.18 | 0.36 |
| 1" ProPEX Fitting Assembly for Commercial Manifold, R25 thread | Q4051000 | 180 | 200 | 23 | 3.22 | 0.38 |

| Nom de la pièce | Numéro de pièce | Les codes | Normes | Annonces |
|---|-----------------|---------------------------|---------------------------------|----------------------------|
| Ensembles de raccords ProPEX pour collecteur | All | IMC IRC NBC of Canada UMC | ASTM F1960 CSA B137.5 ASTM F877 | cNSFus-rfh ICC-ES-PMG 1012 |
| In addition, the following parts have additional codes, standards, or listings: | | | | |
| 3/8" ProPEX Fitting Assembly, R20 Thread | Q4020375 | | R20: ISO 228-G 3/4" | |
| 5/8" ProPEX Fitting Assembly for Commercial Manifold, R25 thread | Q4050625 | | R25: ISO 228-G 1" NSF/ANSI 14 | IAPMO-ES ICC PMG 1006 |
| 3/4" ProPEX Fitting Assembly for Commercial Manifold, R25 thread | Q4050750 | | R25: ISO 228-G 1" NSF/ANSI 14 | IAPMO-ES ICC PMG 1006 |
| 1" ProPEX Fitting Assembly for Commercial Manifold, R25 thread | Q4051000 | | R25: ISO 228-G 1" NSF/ANSI 14 | IAPMO-ES ICC PMG 1006 |

| L'installation | Applications connexes |
|--|-------------------------------------|
| R20 or R25 threads onto the Uponor manifold loop outlets. Compression end enables direct connection to Uponor PEX tubing. For more information, refer to the Uponor Radiant Floor Heating Installation Handbook. Accessories: Replacement O-ring for insert, R20 (A4021116); Replacement O-ring for insert, R25 (A4021000) | Radiant Heating and Cooling Systems |

| Notes de bas de page | Coordonnées de la personne-ressource | | |
|---|--|---|---|
| - | <table border="0"> <tr> <td>Uponor Inc. 5925 148th Street West Apple Valley, MN 55124 T 800.321.4739 F 952.891.2008</td> <td>Uponor Ltd. 6510 Kennedy Road Mississauga, ON L5T 2X4 T 888.594.7726 F 800.638.9517</td> </tr> </table> | Uponor Inc. 5925 148th Street West Apple Valley, MN 55124 T 800.321.4739 F 952.891.2008 | Uponor Ltd. 6510 Kennedy Road Mississauga, ON L5T 2X4 T 888.594.7726 F 800.638.9517 |
| Uponor Inc. 5925 148th Street West Apple Valley, MN 55124 T 800.321.4739 F 952.891.2008 | Uponor Ltd. 6510 Kennedy Road Mississauga, ON L5T 2X4 T 888.594.7726 F 800.638.9517 | | |