

Adaptateurs ProPEX pour raccord à rainure en laiton sans plomb (LF)



Renseignements sur le projet

| | |
|-----------------------------|---------------------|
| Nom du poste : | Lieu : |
| Ingénieur : | Date de soumission: |
| Entrepreneur : | Présentée par: |
| Représentant du fabricant : | Approuvé par : |

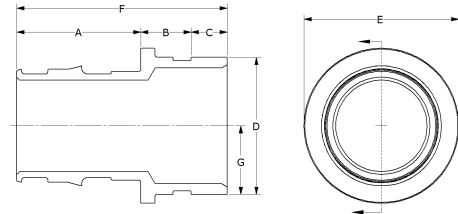
Données techniques

| | |
|-------------------------|--|
| Material | LF Brass |
| Temp/pressure ratings | 73 °F (23 °C) at 160 psi (11 bar) 180 °F (82 °C) at 100 psi (6.9 bar) 200 °F (93 °C) at 80 psi (5.5 bar) |
| Prop 65 label required? | Yes |

Informations sur le produit et utilisation de l'application

ProPEX® lead-free (LF) brass copper tube size (CTS) roll-groove fitting adapters provide a direct connection to roll-groove connections designed to meet CSA B242-05. These fittings are CTS size on the roll-groove connection side.

Note: Temperature and pressure ratings stated are hydrostatic ratings. For domestic hot-water (DHW) and DHW recirculation installations, operating conditions should not exceed 140°F (60°C) at 80 psi (5.5 bar) in accordance with ASTM F2023. For additional information regarding application-specific temperature and pressure ratings, refer to the Uponor PEX Piping Systems Design and Installation Manual.



| Nom de la pièce | Numéro de pièce | A [inch] | B [inch] | C [inch] | D [inch] | E [inch] | F [inch] | G [inch] | Cv | Equivalent length through [ft] | End Type 1 |
|---|-----------------|----------|----------|----------|----------|----------|----------|----------|-------|--------------------------------|---------------|
| ProPEX LF Groove Fitting Adapter, 2" PEX LF Brass x 2" CTS Groove | LFV2962020 | 2.147 | 0.89 | 0.61 | 2.124 | 2.68 | 3.647 | 1.062 | 141.4 | 0.99 | ProPEX 2" |
| ProPEX LF Groove Fitting Adapter, 2" PEX LF Brass x 2 1/2" CTS Groove | LFV2962025 | 2.147 | 0.89 | 0.61 | 2.624 | 2.68 | 3.647 | 1.312 | 128.3 | 1.6 | ProPEX 2" |
| ProPEX LF Groove Fitting Adapter, 2 1/2" PEX LF Brass x 2 1/2" CTS Groove | LFV2962525 | 2.83 | 0.89 | 0.61 | 2.624 | 3.36 | 4.33 | 1.312 | 222.7 | 1.52 | ProPEX 2-1/2" |
| ProPEX LF Groove Fitting Adapter, 3" PEX LF Brass x 3" CTS Groove | LFV2963030 | 3.38 | 0.89 | 0.61 | 3.125 | 3.79 | 4.88 | 1.563 | 338.3 | 1.55 | ProPEX 3" |
| ProPEX LF Groove Fitting Adapter, 2" PEX LF Brass x 2" IPS Groove | LFV2972020 | 2.147 | 0.875 | 0.625 | 2.375 | 2.68 | 3.647 | 1.187 | 114.5 | 2.34 | ProPEX 2" |
| ProPEX LF Groove Fitting Adapter, 2" PEX LF Brass x 2 1/2" IPS Groove | LFV2972025 | 2.147 | 0.875 | 0.625 | 2.875 | 2.876 | 3.647 | 1.437 | 124 | 1.71 | ProPEX 2" |
| ProPEX LF Groove Fitting Adapter, 2 1/2" PEX LF Brass x 2 1/2" IPS Groove | LFV2972525 | 2.83 | 0.875 | 0.625 | 2.875 | 3.36 | 4.33 | 1.437 | 202 | 7.63 | ProPEX 2-1/2" |
| ProPEX LF Groove Fitting Adapter, 2 1/2" PEX LF Brass x 3" IPS Groove | LFV2972530 | 2.83 | 0.875 | 0.625 | 3.5 | 3.501 | 4.33 | 1.75 | 199.8 | 2.39 | ProPEX 2-1/2" |
| ProPEX LF Groove Fitting Adapter, 3" PEX LF Brass x 3" IPS Groove | LFV2973030 | 3.38 | 0.875 | 0.625 | 3.5 | 3.79 | 4.88 | 1.75 | 282.4 | 2.77 | ProPEX 3" |

| Nom de la pièce | Numéro de pièce | End Type 2 | Weight per UOM [lbs/UOM] |
|---|-----------------|-------------------|--------------------------|
| ProPEX LF Groove Fitting Adapter, 2" PEX LF Brass x 2" CTS Groove | LFV2962020 | CTS Groove 2" | 1.12 |
| ProPEX LF Groove Fitting Adapter, 2" PEX LF Brass x 2 1/2" CTS Groove | LFV2962025 | CTS Groove 2-1/2" | 1.24 |
| ProPEX LF Groove Fitting Adapter, 2 1/2" PEX LF Brass x 2 1/2" CTS Groove | LFV2962525 | CTS Groove 2-1/2" | 1.86 |
| ProPEX LF Groove Fitting Adapter, 3" PEX LF Brass x 3" CTS Groove | LFV2963030 | CTS Groove 3" | 2.66 |
| ProPEX LF Groove Fitting Adapter, 2" PEX LF Brass x 2" IPS Groove | LFV2972020 | IPS Groove 2" | 1.2 |
| ProPEX LF Groove Fitting Adapter, 2" PEX LF Brass x 2 1/2" IPS Groove | LFV2972025 | IPS Groove 2-1/2" | 1.38 |
| ProPEX LF Groove Fitting Adapter, 2 1/2" PEX LF Brass x 2 1/2" IPS Groove | LFV2972525 | IPS Groove 2-1/2" | 1.92 |
| ProPEX LF Groove Fitting Adapter, 2 1/2" PEX LF Brass x 3" IPS Groove | LFV2972530 | IPS Groove 3" | 2.18 |
| ProPEX LF Groove Fitting Adapter, 3" PEX LF Brass x 3" IPS | LFV2973030 | IPS Groove 3" | 2.76 |

| Nom de la pièce | Numéro de pièce | Les codes | Normes | Annonces |
|---|-----------------|--|--|--|
| Adaptateurs ProPEX pour raccord à rainure en laiton sans plomb (LF) | All | UPC IBC IRC IPC NPC of Canada UMC NSPC IMC | ASTM F877 NSF/ANSI/CAN 372 ASTM F1960 CSA B137.5 NSF/ANSI/CAN 61 NSF/ANSI 14 | IAPMO-ES ICC-ES-PMG cNSFus-pw-G U.P.Code |
| In addition, the following parts have additional codes, standards, or listings: | | | | |
| ProPEX LF Groove Fitting Adapter, 2" PEX LF Brass x 2 1/2" CTS Groove | LFV2962025 | | | |
| ProPEX LF Groove Fitting Adapter, 2 1/2" PEX LF Brass x 2 1/2" CTS Groove | LFV2962525 | | | |
| ProPEX LF Groove Fitting Adapter, 3" PEX LF Brass x 3" CTS Groove | LFV2963030 | | | |
| ProPEX LF Groove Fitting Adapter, 2 1/2" PEX LF Brass x 3" IPS Groove | LFV2972530 | | | |

| L'installation | Applications connexes |
|---|--|
| ProPEX tool and ProPEX rings (sold separately) are required for connecting the PEX tubing. For more information, refer to the Uponor AquaPEX® professional plumbing installation guide. For making roll-groove connections, follow the roll-groove fitting manufacturer's installation instructions | PEX-a Plumbing Systems Hydronic Radiant Heating and Cooling Systems Permafrost Protection Systems Turf Conditioning Systems |

| Remarques : |
|---|
| Cv = 141.4 when connecting Pex to Pex Cv Outlet 2 = 86.1 when transitioning from Metal to Pex Cv = 128.3 when connecting Pex to Pex Cv Outlet 2 = 73.2 when transitioning from Metal to Pex Cv = 222.7 when connecting Pex to Pex Cv Outlet 2 = 138.7 when transitioning Metal to Pex Cv = 338.3 when connecting Pex to Pex Cv Outlet 2 = 192.3 when transitioning Metal to Pex Cv = 114.5 when connecting Pex to Pex Cv Outlet 2 = 79.7 when transitioning Metal to Pex Cv = 124.0 when connecting Pex to Pex Cv Outlet 2 = 71.6 when transitioning Metal to Pex Cv = 202 when connecting Pex to Pex Cv Outlet 2 = 130.2 when transitioning Metal to Pex Cv = 199.8 when connecting Pex to Pex Cv Outlet 2 = 114.9 when transitioning Metal to Pex Cv = 282.4 when connecting Pex to Pex Cv Outlet 2 = 177.4 when transitioning from Metal to Pex |

| Notes de bas de page | Coordonnées de la personne-ressource | |
|----------------------|---|---|
| - | Uponor Inc. 5925 148th Street West Apple Valley, MN 55124 T 800.321.4739 F 952.891.2008 | Uponor Ltd. 6510 Kennedy Road Mississauga, ON L5T 2X4 T 888.594.7726 F 800.638.9517 |