

Adaptateurs filetés mâles en laiton ProPEX sans plomb (LF)

Renseignements sur le projet

| | |
|-----------------------------|---------------------|
| Nom du poste : | Lieu : |
| Ingénieur : | Date de soumission: |
| Entrepreneur : | Présentée par: |
| Représentant du fabricant : | Approuvé par : |

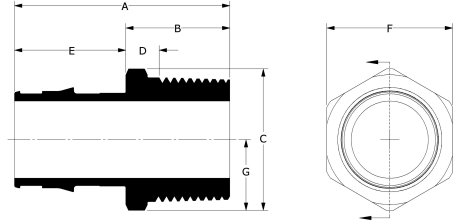
Données techniques

| | |
|-------------------------|----------------------------------------------------------------------------------------------------------------|
| Material | LF Brass |
| Temp/pressure ratings | 73 °F (23 °C) at 160 psi (11 bar) 180 °F (82 °C) at 100 psi (6.9 bar) 200 °F (93 °C) at 80 psi (5.5 bar) |
| Prop 65 label required? | Yes |

Informations sur le produit et utilisation de l'application

ProPEX® Lead-free (LF) Male Threaded Adapter connects Uponor PEX tubing to male NPT threads for use in hot and cold domestic potable water systems, residential fire safety and hydronic radiant heating and cooling systems. 1 These adapters are safe for direct burial in soil

Note: Temperature and pressure ratings stated are hydrostatic ratings. For domestic hot-water (DHW) and DHW recirculation installations, operating conditions should not exceed 140°F (60°C) at 80 psi (5.5 bar) in accordance with ASTM F2023. For additional information regarding application-specific temperature and pressure ratings, refer to the Uponor PEX Piping Systems Design and Installation Manual.



| Nom de la pièce | Numéro de pièce | A [inch] | B [inch] | C [inch] | D [inch] | E [inch] | F [inch] | G [inch] | Cv | Equivalent length through [ft] | End Type 1 |
|----------------------------------------------------------------|-----------------|----------|----------|----------|----------|----------|----------|----------|-------|--------------------------------|---------------|
| ProPEX LF Brass Male Threaded Adapter, 3/4" PEX x 3/4" NPT | LF4527575 | 1.945 | 1 | 1.196 | 0.454 | 0.945 | 1.07 | 0.598 | 11.3 | 2.7 | ProPEX 3/4" |
| ProPEX LF Brass Male Threaded Adapter, 1" PEX x 1" NPT | LF4521010 | 2.286 | 1.105 | 1.502 | 0.422 | 1.181 | 1.335 | 0.751 | 19.9 | 3.2 | ProPEX 1" |
| ProPEX LF Brass Male Threaded Adapter, 1 1/4" PEX x 1 1/4" NPT | LF4521313 | 2.55 | 1.105 | 1.925 | 0.398 | 1.445 | 1.68 | 0.963 | 32.4 | 4.2 | ProPEX 1-1/4" |
| ProPEX LF Brass Male Threaded Adapter, 1/2" PEX x 1/2" NPT | LF4525050 | 1.639 | 0.93 | 0.963 | 0.396 | 0.709 | 0.86 | 0.481 | 5 | 2.3 | ProPEX 1/2" |
| ProPEX LF Brass Male Threaded Adapter, 3/4" PEX x 1" NPT | LF4527510 | 2.045 | 1.1 | 1.511 | 0.417 | 0.945 | 1.335 | 0.756 | 10.9 | 3.4 | ProPEX 3/4" |
| ProPEX LF Brass Male Threaded Adapter, 1" PEX x 3/4" NPT | LF4521075 | 2.201 | 1.02 | 1.404 | 0.474 | 1.181 | 1.25 | 0.702 | 17.8 | 1.2 | ProPEX 1" |
| ProPEX LF Brass Male Threaded Adapter, 1 1/2" PEX x 1 1/2" NPT | LF4521515 | 2.854 | 1.15 | 2.167 | 0.426 | 1.704 | 1.92 | 1.083 | 39.3 | 5.5 | ProPEX 1-1/2" |
| ProPEX LF Brass Male Threaded Adapter, 2" PEX x 2" NPT | LF4522020 | 3.543 | 1.396 | 2.6 | 0.639 | 2.147 | 2.375 | 1.3 | 78.6 | 5.61 | ProPEX 2" |
| ProPEX LF Brass Male Threaded Adapter, 1/2" PEX x 3/4" NPT | LF4525075 | 1.639 | 0.93 | 1.206 | 0.384 | 0.709 | 1.07 | 0.603 | 6.2 | - | ProPEX 1/2" |
| ProPEX LF Brass Male Threaded Adapter, 2 1/2" PEX x 2 1/2" NPT | LF4522525 | 4.83 | 2 | 3.279 | 0.863 | 2.83 | 2.9 | 1.639 | 227.3 | 1.5 | ProPEX 2-1/2" |
| ProPEX LF Brass Male Threaded Adapter, 3" PEX x 3" NPT | LF4523030 | 5.38 | 2 | 3.994 | 0.8 | 3.38 | 3.52 | 1.997 | 187.5 | 9.1 | ProPEX 3" |
| ProPEX LF Brass Male Threaded Adapter, 3/8" PEX x 1/2" NPT | LF4523850 | 1.521 | 0.93 | 0.963 | 0.396 | 0.591 | 0.86 | 0.481 | 5 | 2.3 | ProPEX 3/8" |

| Nom de la pièce | Numéro de pièce | End Type 2 | Weight per UOM [lbs/UOM] |
|----------------------------------------------------------------|-----------------|-------------|--------------------------|
| ProPEX LF Brass Male Threaded Adapter, 3/4" PEX x 3/4" NPT | LF4527575 | MNPT 3/4" | 0.2 |
| ProPEX LF Brass Male Threaded Adapter, 1" PEX x 1" NPT | LF4521010 | MNPT 1" | 0.38 |
| ProPEX LF Brass Male Threaded Adapter, 1 1/4" PEX x 1 1/4" NPT | LF4521313 | MNPT 1-1/4" | 0.62 |
| ProPEX LF Brass Male Threaded Adapter, 1/2" PEX x 1/2" NPT | LF4525050 | MNPT 1/2" | 0.12 |
| ProPEX LF Brass Male Threaded Adapter, 3/4" PEX x 1" NPT | LF4527510 | MNPT 1" | 0.32 |
| ProPEX LF Brass Male Threaded Adapter, 1" PEX x 3/4" NPT | LF4521075 | MNPT 3/4" | 0.26 |

| | | | |
|----------------------------------------------------------------|-----------|-------------|------|
| ProPEX LF Brass Male Threaded Adapter, 1 1/2" PEX x 1 1/2" NPT | LF4521515 | MNPT 1-1/2" | 0.8 |
| ProPEX LF Brass Male Threaded Adapter, 2" PEX x 2" NPT | LF4522020 | MNPT 2" | 1.45 |
| ProPEX LF Brass Male Threaded Adapter, 1/2" PEX x 3/4" NPT | LF4525075 | MNPT 3/4" | - |
| ProPEX LF Brass Male Threaded Adapter, 2 1/2" PEX x 2 1/2" NPT | LF4522525 | MNPT 2-1/2" | 3.1 |
| ProPEX LF Brass Male Threaded Adapter, 3" PEX x 3" NPT | LF4523030 | MNPT 3" | 4.9 |
| ProPEX LF Brass Male Threaded Adapter, 3/8" PEX x 1/2" NPT | LF4523850 | MNPT 1/2" | 0.11 |

| Nom de la pièce | Numéro de pièce | Les codes | Normes | Annonces |
|---------------------------------------------------------------------------------|-----------------|--------------------------------------------|------------------------------------------------------------------------------|------------------------------|
| Adaptateurs filetés mâles en laiton ProPEX sans plomb (LF) | All | UPC IBC IRC IPC NPC of Canada UMC NSPC IMC | ASTM F877 NSF/ANSI/CAN 372 ASTM F1960 CSA B137.5 NSF/ANSI/CAN 61 NSF/ANSI 14 | IAPMO-ES ICC-ES-PMG U.P.Code |
| In addition, the following parts have additional codes, standards, or listings: | | | | |
| ProPEX LF Brass Male Threaded Adapter, 3/4" PEX x 3/4" NPT | LF4527575 | | | cNSFus-pw-G |
| ProPEX LF Brass Male Threaded Adapter, 1" PEX x 1" NPT | LF4521010 | | UL 1821 | cNSFus-pw-fs-G |
| ProPEX LF Brass Male Threaded Adapter, 1 1/4" PEX x 1 1/4" NPT | LF4521313 | | UL 1821 | cNSFus-pw-fs-G |
| ProPEX LF Brass Male Threaded Adapter, 1/2" PEX x 1/2" NPT | LF4525050 | | | cNSFus-pw-G |
| ProPEX LF Brass Male Threaded Adapter, 3/4" PEX x 1" NPT | LF4527510 | | | cNSFus-pw-G |
| ProPEX LF Brass Male Threaded Adapter, 1" PEX x 3/4" NPT | LF4521075 | | | cNSFus-pw-G |
| ProPEX LF Brass Male Threaded Adapter, 1 1/2" PEX x 1 1/2" NPT | LF4521515 | | | cNSFus-pw-G |
| ProPEX LF Brass Male Threaded Adapter, 2" PEX x 2" NPT | LF4522020 | | | cNSFus-pw-G |
| ProPEX LF Brass Male Threaded Adapter, 1/2" PEX x 3/4" NPT | LF4525075 | | UL 1821 | cNSFus-pw-fs-G |
| ProPEX LF Brass Male Threaded Adapter, 2 1/2" PEX x 2 1/2" NPT | LF4522525 | | | cNSFus-pw-G |
| ProPEX LF Brass Male Threaded Adapter, 3" PEX x 3" NPT | LF4523030 | | | cNSFus-pw-G |
| ProPEX LF Brass Male Threaded Adapter, 3/8" PEX x 1/2" NPT | LF4523850 | | | cNSFus-pw-G |

| L'installation | Applications connexes |
|---------------------------------------------------------------------------------------------------------------------------------------------------------------------------------------------------------------------------------------------|----------------------------------------------------------------------------------------------------------------------------------------------------------------------------------------------------------------------------------------|
| Use the appropriate ProPEX Ring for PEX-a tubing. Refer to the Uponor Professional Plumbing Installation Guide, AquaSAFE™ Residential Fire Sprinkler Installation Guide or Uponor Radiant Installation Handbook for additional information. | <ul style="list-style-type: none"> PEX-a Plumbing Systems Radiant Heating and Cooling Systems Permafrost Protection Systems Turf Conditioning Systems AquaSAFE™ Fire Safety Systems |

| Notes de bas de page | Coordonnées de la personne-ressource | | |
|-----------------------------------------------------------------------------------------------------|-----------------------------------------------------------------------------------------------------------------------------------------------------------------------------------------------------------------------------------------------------------|-----------------------------------------------------------------------------------------------------|-------------------------------------------------------------------------------------------------|
| - | <table> <tr> <td>Uponor Inc. 5925 148th Street West Apple Valley, MN 55124 T 800.321.4739 F 952.891.2008</td> <td>Uponor Ltd. 6510 Kennedy Road Mississauga, ON L5T 2X4 T 888.594.7726 F 800.638.9517</td> </tr> </table> | Uponor Inc. 5925 148th Street West Apple Valley, MN 55124 T 800.321.4739 F 952.891.2008 | Uponor Ltd. 6510 Kennedy Road Mississauga, ON L5T 2X4 T 888.594.7726 F 800.638.9517 |
| Uponor Inc. 5925 148th Street West Apple Valley, MN 55124 T 800.321.4739 F 952.891.2008 | Uponor Ltd. 6510 Kennedy Road Mississauga, ON L5T 2X4 T 888.594.7726 F 800.638.9517 | | |