

Adaptateurs soudés à l'étain ProPEX en laiton sans plomb (LF)



Renseignements sur le projet

| | |
|-----------------------------|---------------------|
| Nom du poste : | Lieu : |
| Ingénieur : | Date de soumission: |
| Entrepreneur : | Présentée par: |
| Représentant du fabricant : | Approuvé par : |

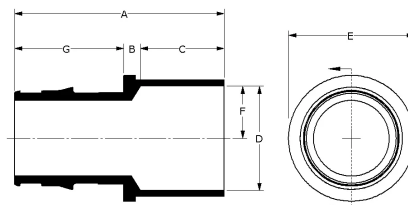
Données techniques

| | |
|-------------------------|--|
| Material | LF Brass |
| Temp/pressure ratings | 73 °F (23 °C) at 160 psi (11 bar) 180 °F (82 °C) at 100 psi (6.9 bar) 200 °F (93 °C) at 80 psi (5.5 bar) |
| Prop 65 label required? | Yes |

Informations sur le produit et utilisation de l'application

ProPEX® lead-free (LF) brass sweat adapters transition Uponor PEX tubing to copper pipe for use in hot and cold domestic potable water systems, residential fire safety and hydronic radiant heating and cooling systems. 1 These adapters are safe for direct burial in soil.

Note: Temperature and pressure ratings stated are hydrostatic ratings. For domestic hot-water (DHW) and DHW recirculation installations, operating conditions should not exceed 140°F (60°C) at 80 psi (5.5 bar) in accordance with ASTM F2023. For additional information regarding application-specific temperature and pressure ratings, refer to the Uponor PEX Piping Systems Design and Installation Manual.



| Nom de la pièce | Numéro de pièce | A [inch] | B [inch] | C [inch] | D [inch] | E [inch] | F [inch] | G [inch] | Cv | Equivalent length through [ft] | End Type 1 |
|---|-----------------|----------|----------|----------|----------|----------|----------|----------|-------|--------------------------------|---------------|
| ProPEX LF Brass Sweat Adapter, 3/8" PEX x 1/2" Copper | LF4513850 | 1.32 | 0.229 | 0.5 | 0.629 | 0.719 | 0.315 | 0.591 | 5.7 | 2 | ProPEX 3/8" |
| ProPEX LF Brass Sweat Adapter, 3/4" PEX x 3/4" Copper | LF4517575 | 1.863 | 0.168 | 0.75 | 0.879 | 1.1 | 0.439 | 0.945 | 13.4 | 2.1 | ProPEX 3/4" |
| ProPEX LF Brass Sweat Adapter, 1" PEX x 1" Copper | LF4511010 | 2.268 | 0.177 | 0.91 | 1.13 | 1.36 | 0.565 | 1.181 | 22.1 | 2.4 | ProPEX 1" |
| ProPEX LF Brass Sweat Adapter, 1 1/4" PEX x 1 1/4" Copper | LF4511313 | 2.608 | 0.193 | 0.97 | 1.38 | 1.64 | 0.69 | 1.445 | 34 | 3.9 | ProPEX 1-1/4" |
| ProPEX LF Brass Sweat Adapter, 1/2" PEX x 3/4" Copper | LF4515075 | 1.634 | 0.175 | 0.75 | 0.879 | 0.987 | 0.439 | 0.709 | 5.1 | 2.7 | ProPEX 1/2" |
| ProPEX LF Brass Sweat Adapter, 1/2" PEX x 1/2" Copper | LF4515050 | 1.368 | 0.159 | 0.5 | 0.629 | 0.77 | 0.315 | 0.709 | 5.7 | 2 | ProPEX 1/2" |
| ProPEX LF Brass Sweat Adapter, 3/4" PEX x 1/2" Copper | LF4517550 | 1.674 | 0.229 | 0.5 | 0.629 | 1.1 | 0.315 | 0.945 | 8.8 | 1.4 | ProPEX 3/4" |
| ProPEX LF Brass Sweat Adapter, 3/4" PEX x 1" Copper | LF4517510 | 2.094 | 0.239 | 0.91 | 1.13 | 1.256 | 0.565 | 0.945 | 10.9 | 3.7 | ProPEX 3/4" |
| ProPEX LF Brass Sweat Adapter, 1 1/2" PEX x 1 1/2" Copper | LF4511515 | 3.062 | 0.268 | 1.09 | 1.63 | 1.85 | 0.815 | 1.704 | 45.5 | 4.3 | ProPEX 1-1/2" |
| ProPEX LF Brass Sweat Adapter, 2" PEX x 2" Copper | LF4512020 | 3.73 | 0.243 | 1.34 | 2.13 | 2.6 | 1.065 | 2.147 | 83.6 | 5.3 | ProPEX 2" |
| ProPEX LF Brass Sweat Adapter, 2 1/2" PEX x 2 1/2" Copper | LF4512525 | 4.58 | 0.28 | 1.47 | 2.63 | 3.36 | 1.315 | 2.83 | 136.2 | 6.89 | ProPEX 2-1/2" |
| ProPEX LF Brass Sweat Adapter, 3" PEX x 3" Copper | LF4513030 | 5.33 | 0.29 | 1.66 | 3.13 | 3.79 | 1.565 | 3.38 | 189.1 | 8.79 | ProPEX 3" |

| Nom de la pièce | Numéro de pièce | End Type 2 | Weight per UOM [lbs/UOM] |
|---|-----------------|--------------|--------------------------|
| ProPEX LF Brass Sweat Adapter, 3/8" PEX x 1/2" Copper | LF4513850 | Sweat 1/2" | 0.05 |
| ProPEX LF Brass Sweat Adapter, 3/4" PEX x 3/4" Copper | LF4517575 | Sweat 3/4" | 0.11 |
| ProPEX LF Brass Sweat Adapter, 1" PEX x 1" Copper | LF4511010 | Sweat 1" | 0.2 |
| ProPEX LF Brass Sweat Adapter, 1 1/4" PEX x 1 1/4" Copper | LF4511313 | Sweat 1-1/4" | 0.35 |
| ProPEX LF Brass Sweat Adapter, 1/2" PEX x 3/4" Copper | LF4515075 | Sweat 3/4" | 0.09 |
| ProPEX LF Brass Sweat Adapter, 1/2" PEX x 1/2" Copper | LF4515050 | Sweat 1/2" | 0.05 |
| ProPEX LF Brass Sweat Adapter, 3/4" PEX x 1/2" Copper | LF4517550 | Sweat 1/2" | 0.1 |
| ProPEX LF Brass Sweat Adapter, 3/4" PEX x 1" Copper | LF4517510 | Sweat 1" | 0.17 |

| | | | |
|---|-----------|--------------|------|
| ProPEX LF Brass Sweat Adapter, 1 1/2" PEX x 1 1/2" Copper | LF4511515 | Sweat 1-1/2" | 0.5 |
| ProPEX LF Brass Sweat Adapter, 2" PEX x 2" Copper | LF4512020 | Sweat 2" | 1 |
| ProPEX LF Brass Sweat Adapter, 2 1/2" PEX x 2 1/2" Copper | LF4512525 | Sweat 2-1/2" | 1.9 |
| ProPEX LF Brass Sweat Adapter, 3" PEX x 3" Copper | LF4513030 | Sweat 3" | 2.85 |

| Nom de la pièce | Numéro de pièce | Les codes | Normes | Annonces |
|---|-----------------|--|--|------------------------------|
| Adaptateurs soudés à l'étain ProPEX en laiton sans plomb (LF) | All | UPC IBC IRC IPC NPC of Canada UMC NSPC IMC | NSF/ANSI/CAN 372 ASTM F877 ASTM F1960 CSA B137.5 NSF/ANSI/CAN 61 NSF/ANSI 14 | IAPMO-ES ICC-ES-PMG U.P.Code |

In addition, the following parts have additional codes, standards, or listings:

| | | | | |
|---|-----------|--|---------|----------------|
| ProPEX LF Brass Sweat Adapter, 3/8" PEX x 1/2" Copper | LF4513850 | | | cNSFus-pw-G |
| ProPEX LF Brass Sweat Adapter, 3/4" PEX x 3/4" Copper | LF4517575 | | UL 1821 | cNSFus-pw-fs-G |
| ProPEX LF Brass Sweat Adapter, 1" PEX x 1" Copper | LF4511010 | | UL 1821 | cNSFus-pw-fs-G |
| ProPEX LF Brass Sweat Adapter, 1 1/4" PEX x 1 1/4" Copper | LF4511313 | | UL 1821 | cNSFus-pw-fs-G |
| ProPEX LF Brass Sweat Adapter, 1/2" PEX x 3/4" Copper | LF4515075 | | | cNSFus-pw-G |
| ProPEX LF Brass Sweat Adapter, 1/2" PEX x 1/2" Copper | LF4515050 | | | cNSFus-pw-G |
| ProPEX LF Brass Sweat Adapter, 3/4" PEX x 1/2" Copper | LF4517550 | | | cNSFus-pw-G |
| ProPEX LF Brass Sweat Adapter, 3/4" PEX x 1" Copper | LF4517510 | | | cNSFus-pw-G |
| ProPEX LF Brass Sweat Adapter, 1 1/2" PEX x 1 1/2" Copper | LF4511515 | | | cNSFus-pw-G |
| ProPEX LF Brass Sweat Adapter, 2" PEX x 2" Copper | LF4512020 | | | cNSFus-pw-G |
| ProPEX LF Brass Sweat Adapter, 2 1/2" PEX x 2 1/2" Copper | LF4512525 | | | cNSFus-pw-G |
| ProPEX LF Brass Sweat Adapter, 3" PEX x 3" Copper | LF4513030 | | | cNSFus-pw-G |

| L'installation | Applications connexes |
|--|--|
| Use the appropriate Uponor ProPEX rings for the tubing (sold separately). Do not solder within 18" of ProPEX fittings. Refer to the AquaPEX® Professional Plumbing Installation Guide, Radiant Floor Heating Installation Handbook or AquaSAFETM Residential Fire Sprinkler Installation Guide for additional information. | <ul style="list-style-type: none"> Radiant Heating and Cooling Systems Permafrost Protection Systems Turf Conditioning Systems AquaSAFE™ Fire Safety Systems |

| Notes de bas de page | Coordonnées de la personne-ressource |
|----------------------|---|
| - | <p>Uponor Inc. 5925 148th Street West Apple Valley, MN 55124 T 800.321.4739 F 952.891.2008</p> <p>Uponor Ltd. 6510 Kennedy Road Mississauga, ON L5T 2X4 T 888.594.7726 F 800.638.9517</p> |