

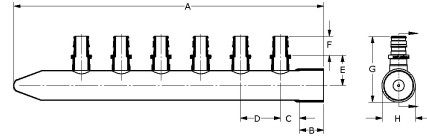
# Collecteurs à embranchements ProPEX en cuivre (type L)

## Renseignements sur le projet

Nom du poste :	Lieu :
Ingénieur :	Date de soumission:
Entrepreneur :	Présentée par:
Représentant du fabricant :	Approuvé par :

## Données techniques

Material	Copper
Subcomponent Material	Copper, LF Brass
Manifold size	1 inch
End type 1	ProPEX 1/2"
End type 2	Sweat 1"
Temp/pressure ratings	73 °F (23 °C) at 160 psi (11 bar) 180 °F (82 °C) at 100 psi (6.9 bar) 200 °F (93 °C) at 80 psi (5.5 bar) 210 °F (99 °C) at 149 psi (10.3 bar)
Max. fluid flow rate	21 gpm
Prop 65 label required?	Yes



## Informations sur le produit et utilisation de l'application

The Uponor 1" Copper Branch Manifold with 1/2" ProPEX® Lead-free (LF) Outlets is used for hot and cold domestic potable-water distribution systems.1 The manifold has a 1" copper sweat fitting adapter supply connection. All outlets are configured with 1/2" ProPEX LF brass connections.

Note: Temperature and pressure ratings stated are hydrostatic ratings. For domestic hot-water (DHW) and DHW recirculation installations, operating conditions should not exceed 140°F (60°C) at 80 psi (5.5 bar) in accordance with ASTM F2023. For additional information regarding application-specific temperature and pressure ratings, refer to the Uponor PEX Piping Systems Design and Installation Manual.

Nom de la pièce	Numéro de pièce	A [inch]	B [inch]	C [inch]	D [inch]	E [inch]	F [inch]	G [inch]	H [inch]	Weight per UOM [lbs/UOM]
ProPEX 1" Copper Branch Manifold with 1/2" ProPEX LF brass outlets, 4 outlets	LF2801050	8.675	0.987	0.639	1.5	1.143	0.709	2.479	1.256	0.8
ProPEX 1" Copper Branch Manifold with 1/2" ProPEX LF brass outlets, 6 outlets	LF2811050	11.675	0.987	0.639	1.5	1.143	0.709	2.479	1.256	1.1
ProPEX 1" Copper Branch Manifold with 1/2" ProPEX LF brass outlets, 8 outlets	LF2821050	14.675	0.987	0.639	1.5	1.143	0.709	2.479	1.256	1.4
ProPEX 1" Copper Branch Manifold with 1/2" ProPEX LF brass outlets, 10 outlets	LF2831050	17.675	0.987	0.639	1.5	1.143	0.709	2.479	1.256	1.7
ProPEX 1" Copper Branch Manifold with 1/2" ProPEX LF brass outlets, 12 outlets	LF2841050	20.675	0.987	0.639	1.5	1.143	0.709	2.479	1.256	1.9

Nom de la pièce	Numéro de pièce	Les codes	Normes	Annonces
Collecteurs à embranchements ProPEX en cuivre (type L)	All	UPC IBC IRC IPC NPC of Canada NSPC IMC	NSF/ANSI/CAN 372 ASTM F877 ASTM F1960 CSA B137.5 NSF/ANSI/CAN 61 NSF/ANSI 14	IAPMO-ES ICC-ES-PMG cNSFus-pw-G U.P.Code

In addition, the following parts have additional codes, standards, or listings:

ProPEX 1" Copper Branch Manifold with 1/2" ProPEX LF brass outlets, 4 outlets	LF2801050	UMC
ProPEX 1" Copper Branch Manifold with 1/2" ProPEX LF brass outlets, 6 outlets	LF2811050	UMC
ProPEX 1" Copper Branch Manifold with 1/2" ProPEX LF brass outlets, 10 outlets	LF2831050	UMC
ProPEX 1" Copper Branch Manifold with 1/2" ProPEX LF brass outlets, 12 outlets	LF2841050	UMC

**L'installation**

Use any product designed to mount 1" copper pipe as a mounting bracket. Any bend within 6 inches of the ProPEX connection to the manifold requires the use of a Tube Talon (F7050750) or Bend Support (A5110500 and A5150500). Refer to the Uponor Commercial Piping Pocket Guide, Uponor AquaSAFE™ Residential Fire Sprinkler Installation Guide or the Uponor Radiant Installation Handbook for additional information.

**Applications connexes**

PEX-a Plumbing Systems  
Residential fire safety systems  
Radiant Heating and Cooling Systems

**Remarques :**

Maximum Flow Rate at 5 fps: 12.8 gpm  
Maximum Flow Rate at 8 fps: 20.5 gpm

**Notes de bas de page****Coordonnées de la personne-ressource**

Uponor Inc.  
5925 148th Street West  
Apple Valley, MN 55124  
T 800.321.4739  
F 952.891.2008

Uponor Ltd.  
6510 Kennedy Road  
Mississauga, ON L5T 2X4  
T 888.594.7726  
F 800.638.9517