

Adaptateurs de douille ProPEX en laiton sans plomb (LF) à PVC-C



Renseignements sur le projet

Nom du poste :	Lieu :
Ingénieur :	Date de soumission:
Entrepreneur :	Présentée par:
Représentant du fabricant :	Approuvé par :

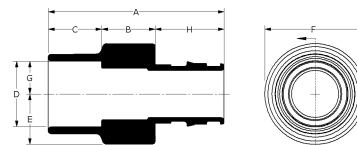
Données techniques

Material	LF Brass
Subcomponent Material	Body: LF Brass and CPVC O-ring: EPDM
Temp/pressure ratings	73 °F (23 °C) at 160 psi (11 bar) 180 °F (82 °C) at 100 psi (6.9 bar) 200 °F (93 °C) at 80 psi (5.5 bar)
Prop 65 label required?	Yes

Informations sur le produit et utilisation de l'application

ProPEX® Lead-free (LF) Brass CPVC Socket Adapters transition Uponor PEX tubing to CPVC copper tube size (CTS) pipe for use in hot and cold domestic potable water systems and hydronic radiant heating and cooling systems.

Note: Temperature and pressure ratings stated are hydrostatic ratings. For domestic hot-water (DHW) and DHW recirculation installations, operating conditions should not exceed 140°F (60°C) at 80 psi (5.5 bar) in accordance with ASTM F2023. For additional information regarding application-specific temperature and pressure ratings, refer to the Uponor PEX Piping Systems Design and Installation Manual.



Nom de la pièce	Numéro de pièce	A [inch]	B [inch]	C [inch]	D [inch]	E [inch]	F [inch]	G [inch]	H [inch]	End Type 1	End Type 2
ProPEX LF Brass x CPVC Socket Adapter, 1 1/4" PEX x 1 1/4" CPVC (CTS)	CP4511313	3.685	1.12	1.12	1.385	1.055	2.11	0.693	1.445	ProPEX 1-1/4"	CPVC 1-1/4"
ProPEX LF Brass x CPVC Socket Adapter, 1 1/2" PEX x 1 1/2" CPVC (CTS)	CP4511515	4.184	1.16	1.32	1.64	1.2	2.4	0.82	1.704	ProPEX 1-1/2"	CPVC 1-1/2"
ProPEX LF Brass x CPVC Socket Adapter, 2" PEX x 2" CPVC (CTS)	CP4512020	5.227	1.36	1.72	2.141	1.5	3.0	1.07	2.147	ProPEX 2"	CPVC 2"

Nom de la pièce	Numéro de pièce	Weight per UOM [lbs/UOM]
ProPEX LF Brass x CPVC Socket Adapter, 1 1/4" PEX x 1 1/4" CPVC (CTS)	CP4511313	0.62
ProPEX LF Brass x CPVC Socket Adapter, 1 1/2" PEX x 1 1/2" CPVC (CTS)	CP4511515	0.77
ProPEX LF Brass x CPVC Socket Adapter, 2" PEX x 2" CPVC (CTS)	CP4512020	1.42

Nom de la pièce	Numéro de pièce	Les codes	Normes	Annonces
Adaptateurs de douille ProPEX en laiton sans plomb (LF) à PVC-C	All	UPC IBC IRC IPC NPC of Canada UMC NSPC IMC	ASTM F877 ASTM F1960 CSA B137.5 ASTM D2846	IAPMO-ES HUD MR 1269 ICC-ES-PMG cNSFus-pw-G U.P.Code cQAlus P321
In addition, the following parts have additional codes, standards, or listings:				
ProPEX LF Brass x CPVC Socket Adapter, 1 1/4" PEX x 1 1/4" CPVC (CTS)	CP4511313		NSF-372 NSF-61 NSF-14	
ProPEX LF Brass x CPVC Socket Adapter, 1 1/2" PEX x 1 1/2" CPVC (CTS)	CP4511515		NSF/ANSI/CAN 372 NSF/ANSI/CAN 61 NSF/ANSI 14	
ProPEX LF Brass x CPVC Socket Adapter, 2" PEX x 2" CPVC (CTS)	CP4512020		NSF/ANSI/CAN 372 NSF/ANSI/CAN 61 NSF/ANSI 14	

L'installation

Use the appropriate Uponor ProPEX Ring for the tubing (sold separately). Refer to the Uponor AquaPEX® Professional Plumbing Installation Guide or Uponor Radiant Floor Heating Installation Handbook for additional information. Follow all CPVC instructions and guidelines for proper CPVC connections.

Applications connexes

- PEX-a Plumbing Systems
- Radiant Heating and Cooling Systems
- Permafrost Protection Systems
- Turf Conditioning Systems

Uponor Inc.
5925 148th Street West
Apple Valley, MN 55124
T 800.321.4739
F 952.891.2008

Uponor Ltd.
6510 Kennedy Road
Mississauga, ON L5T 2X4
T 888.594.7726
F 800.638.9517
