

# Adaptateurs ProPEX à emboîtement mâle en laiton sans plomb (LF) à PVC-C



## Renseignements sur le projet

|                             |                     |
|-----------------------------|---------------------|
| Nom du poste :              | Lieu :              |
| Ingénieur :                 | Date de soumission: |
| Entrepreneur :              | Présentée par:      |
| Représentant du fabricant : | Approuvé par :      |

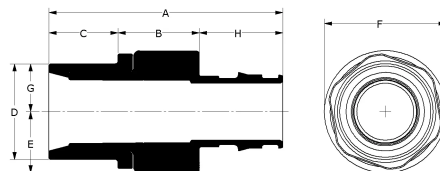
## Données techniques

|                         |  |
|-------------------------|--|
| Material                | LF Brass   |
| Subcomponent Material   | Body: LF Brass and CPVC<br>O-ring: EPDM  |
| Temp/pressure ratings   | 73 °F (23 °C) at 160 psi (11 bar)<br>180 °F (82 °C) at 100 psi (6.9 bar)<br>200 °F (93 °C) at 80 psi (5.5 bar) |
| Prop 65 label required? | Yes  |

## Informations sur le produit et utilisation de l'application

ProPEX® Lead-free (LF) Brass CPVC Spigot Adapters transition Uponor PEX tubing to CPVC copper tube size (CTS) fittings for use in hot and cold domestic potable water systems and hydronic radiant heating and cooling systems. 1

Note: Temperature and pressure ratings stated are hydrostatic ratings. For domestic hot-water (DHW) and DHW recirculation installations, operating conditions should not exceed 140°F (60°C) at 80 psi (5.5 bar) in accordance with ASTM F2023. For additional information regarding application-specific temperature and pressure ratings, refer to the Uponor PEX Piping Systems Design and Installation Manual.



| Nom de la pièce   | Numéro de pièce | A [inch] | B [inch] | C [inch] | D [inch] | E [inch] | F [inch] | G [inch] | H [inch] | End Type 1    | End Type 2  |
|---|-----------------|----------|----------|----------|----------|----------|----------|----------|----------|---------------|-------------|
| ProPEX LF Brass x CPVC Spigot Adapter, 1 1/4" PEX x 1 1/4" CPVC (CTS) | CP4501313       | 3.705    | 1.14     | 1.12     | 1.373    | 1.055    | 2.11     | 0.687    | 1.445    | ProPEX 1-1/4" | CPVC 1-1/4" |
| ProPEX LF Brass x CPVC Spigot Adapter, 1 1/2" PEX x 1 1/2" CPVC (CTS) | CP4501515       | 4.204    | 1.18     | 1.32     | 1.627    | 1.2      | 2.4      | 0.813    | 1.704    | ProPEX 1-1/2" | CPVC 1-1/2" |
| ProPEX LF Brass x CPVC Spigot Adapter, 2" PEX x 2" CPVC (CTS)         | CP4502020       | 5.287    | 1.42     | 1.72     | 2.123    | 1.5      | 3.0      | 1.061    | 2.147    | ProPEX 2"     | CPVC 2"     |

| Nom de la pièce   | Numéro de pièce | Weight per UOM [lbs/UOM] |
|---|-----------------|--------------------------|
| ProPEX LF Brass x CPVC Spigot Adapter, 1 1/4" PEX x 1 1/4" CPVC (CTS) | CP4501313       | 0.6                      |
| ProPEX LF Brass x CPVC Spigot Adapter, 1 1/2" PEX x 1 1/2" CPVC (CTS) | CP4501515       | 0.75                     |
| ProPEX LF Brass x CPVC Spigot Adapter, 2" PEX x 2" CPVC (CTS)         | CP4502020       | 1.4                      |

| Nom de la pièce   | Numéro de pièce | Les codes                                  | Normes                                       | Annonces   |
|---|-----------------|--|--|--|
| Adaptateurs ProPEX à emboîtement mâle en laiton sans plomb (LF) à PVC-C         | All             | UPC IBC IRC IPC NPC of Canada UMC NSPC IMC | ASTM F877 ASTM F1960 CSA B137.5 ASTM D2846   | IAPMO-ES HUD MR 1269 ICC-ES-PMG cNSFus-pw-G U.P.Code cQAlus P321 |
| In addition, the following parts have additional codes, standards, or listings: |                 |  |  |  |
| ProPEX LF Brass x CPVC Spigot Adapter, 1 1/4" PEX x 1 1/4" CPVC (CTS)           | CP4501313       |  | NSF/ANSI/CAN 372 NSF/ANSI/CAN 61 NSF/ANSI 14 |  |
| ProPEX LF Brass x CPVC Spigot Adapter, 1 1/2" PEX x 1 1/2" CPVC (CTS)           | CP4501515       |  | NSF-372 NSF-61 NSF-14                        |  |
| ProPEX LF Brass x CPVC Spigot Adapter, 2" PEX x 2" CPVC (CTS)                   | CP4502020       |  | NSF-372 NSF-61 NSF-14                        |  |

## L'installation

Use the appropriate Uponor ProPEX Ring for the tubing (sold separately). Refer to the Uponor AquaPEX® Professional Plumbing Installation Guide or Uponor Radiant Floor Heating Installation Handbook for additional information. Follow all CPVC instructions and guidelines for proper CPVC connections.

## Applications connexes

- PEX-a Plumbing Systems
- Radiant Heating and Cooling Systems
- Permafrost Protection Systems
- Turf Conditioning Systems
- AquaSAFE™ Fire Safety Systems

Uponor Inc.  
5925 148th Street West  
Apple Valley, MN 55124  
T 800.321.4739  
F 952.891.2008

Uponor Ltd.  
6510 Kennedy Road  
Mississauga, ON L5T 2X4  
T 888.594.7726  
F 800.638.9517

---