

Ensembles de raccords de compression pour collecteur de type QS



Renseignements sur le projet

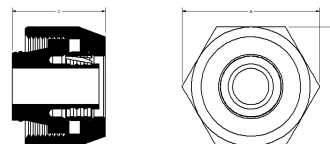
| | |
|-----------------------------|---------------------|
| Nom du poste : | Lieu : |
| Ingénieur : | Date de soumission: |
| Entrepreneur : | Présentée par: |
| Représentant du fabricant : | Approuvé par : |

Données techniques

| | |
|-------------------------|--|
| Material | Brass |
| Temp/pressure ratings | 73 °F (23 °C) at 160 psi (11 bar) 180 °F (82 °C) at 100 psi (6.9 bar) 200 °F (93 °C) at 80 psi (5.5 bar) |
| Prop 65 label required? | Yes |

Informations sur le produit et utilisation de l'application

The Uponor R20 Compression Fitting Assembly threads onto manifold loop outlets. This R20 QS (Quick Seal) compression fitting connects Wirsbo hePEX™ or Uponor AquaPEX® tubing to the manifold in radiant heating applications and is designed for 5/16", 3/8", 1/2" or 5/8" tubing. The R25 QS compression fitting does not directly thread onto the manifold, but onto other R25 connections, and is designed for use with 5/8" and 3/4" tubing only.



| Nom de la pièce | Numéro de pièce | A [inch] | B [inch] | C [inch] | Subcomponent Material | End Type 1 | End Type 2 | D [inch] | Cv | Equivalent length through [ft] | Weight per UOM [lbs/UOM] |
|--|-----------------|----------|----------|----------|-----------------------------------|------------------|----------------|----------|------|--------------------------------|--------------------------|
| 5/16" QS-style Compression Fitting Assembly, R20 thread | A4020313 | 1.372 | 1.187 | 1.057 | Fitting: CA 360 Brass | QS 5/16" | ISO 228-G 3/4" | - | - | - | 0.26 |
| 3/8" QS-style Compression Fitting Assembly, R20 thread | A4020375 | 1.372 | 1.187 | 1.004 | Fitting: CA 360 Brass | QS 3/8" | ISO 228-G 3/4" | - | - | - | 0.23 |
| 1/2" QS-style Compression Fitting Assembly, R20 thread | A4020500 | 1.372 | 1.187 | 1.004 | Fitting: CA 360 Brass | QS 1/2" | ISO 228-G 3/4" | - | - | - | 0.21 |
| 5/8" QS-style Compression Fitting Assembly, R20 thread | A4020625 | 1.372 | 1.187 | 1.004 | Fitting: CA 360 Brass | QS 5/8" | ISO 228-G 3/4" | - | - | - | 0.19 |
| 5/8" QS-style Compression Fitting Assembly, R25 thread | A4030625 | 1.729 | 1.5 | 1.064 | Fitting: CA 360 Brass | QS 5/8" | ISO 228-G 1" | - | - | - | 0.4 |
| 3/4" QS-style Compression Fitting Assembly, R25 thread | A4020750 | 1.66 | 1.5 | 1.099 | Fitting: UNS C36000 UNS C37700 | QS 3/4" | ISO 228-G 1" | - | - | - | 0.33 |
| 5/8" QS-style Compression Fitting Assembly for Commercial Manifold, R25 thread | A4050625 | 1.729 | 1.5 | 1.217 | - | Compression 5/8" | ISO 228-G 1" | - | 6.58 | 4.56 | 0.4 |
| 3/4" QS-style Compression Fitting Assembly for Commercial Manifold, R25 thread | A4050750 | 1.66 | 1.5 | 1.221 | - | Compression 3/4" | ISO 228-G 1" | - | 8.08 | 7.12 | 0.4 |

| Nom de la pièce | Numéro de pièce | Les codes | Normes | Annonces |
|---|-----------------|---------------------------|-------------------------------|----------------------------|
| Ensembles de raccords de compression pour collecteur de type QS | All | IMC IRC NBC of Canada UMC | CSA B137.5 ASTM F877 | cNSFus-rfh ICC-ES-PMG 1012 |
| In addition, the following parts have additional codes, standards, or listings: | | | | |
| 5/16" QS-style Compression Fitting Assembly, R20 thread | A4020313 | | R32: ISO 228-G 3/4" | |
| 3/8" QS-style Compression Fitting Assembly, R20 thread | A4020375 | | R32: ISO 228-G 3/4" | |
| 1/2" QS-style Compression Fitting Assembly, R20 thread | A4020500 | | R32: ISO 228-G 3/4" | |
| 5/8" QS-style Compression Fitting Assembly, R20 thread | A4020625 | | R32: ISO 228-G 3/4" | |
| 5/8" QS-style Compression Fitting Assembly, R25 thread | A4030625 | | R32: ISO 228-G 1" | |
| 3/4" QS-style Compression Fitting Assembly, R25 thread | A4020750 | | R32: ISO 228-G 1" | |
| 5/8" QS-style Compression Fitting Assembly for Commercial Manifold, R25 thread | A4050625 | | R25: ISO 228-G 1" NSF/ANSI 14 | IAPMO-ES ICC PMG 1006 |
| 3/4" QS-style Compression Fitting Assembly for Commercial Manifold, R25 thread | A4050750 | | R25: ISO 228-G 1" NSF/ANSI 14 | IAPMO-ES ICC PMG 1006 |

L'installation

The R20-threaded Compression Fitting connects to Uponor manifold loop outlets. The compression end enables direct connection to Wirsbo hePEX tubing. Use the R25-threaded Compression Fitting for other R25 connections. For more information, refer to the Radiant Floor Heating Installation Handbook.

Applications connexes

Radiant Heating and Cooling Systems
Permafrost Protection Systems
Turf Conditioning Systems

Notes de bas de page

Coordonnées de la personne-ressource

Uponor Inc.
5925 148th Street West
Apple Valley, MN 55124
T 800.321.4739
F 952.891.2008

Uponor Ltd.
6510 Kennedy Road
Mississauga, ON L5T 2X4
T 888.594.7726
F 800.638.9517