

# Joint à compression mural

## Renseignements sur le projet

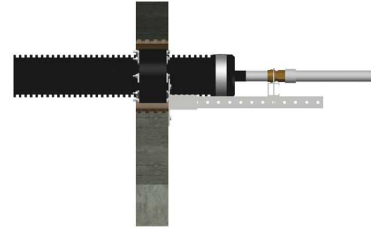
|                             |                     |
|-----------------------------|---------------------|
| Nom du poste :              | Lieu :              |
| Ingénieur :                 | Date de soumission: |
| Entrepreneur :              | Présentée par:      |
| Représentant du fabricant : | Approuvé par :      |

## Données techniques

|                         |        |
|-------------------------|--------|
| Material                | Rubber |
| Prop 65 label required? | Yes    |

## Informations sur le produit et utilisation de l'application

Ecoflex® compression wall seals can be used with wall sleeves, or can be used alone where a field core drill is preferred. It creates a watertight seal between the core drill surface and the outer jacket of Ecoflex piping



| Nom de la pièce                       | Numéro de pièce | Inner diameter pipe [inch] | Outer diameter pipe [inch] | Subcomponent Material                                      | Weight per UOM [lbs/UOM] |
|---------------------------------------|-----------------|----------------------------|----------------------------|--|--------------------------|
| Compression Wall Seal for 2.7" Jacket | 1007358         | 2.7559                     | 4.7638                     | Hardware: Galvanized steel<br>Rubber gasket: (EPDM) rubber | 2.6                      |
| Compression Wall Seal for 5.5" Jacket | 1007360         | 5.5118                     | 7.874                      | Hardware: Galvanized steel<br>Rubber gasket: (EPDM) rubber | 5.1                      |
| Compression Wall Seal for 6.9" Jacket | 1007361         | 6.9685                     | 9.7638                     | Hardware: Galvanized steel<br>Rubber gasket: (EPDM) rubber | 7.8                      |
| Compression Wall Seal for 7.9" Jacket | 1007362         | 7.9528                     | 9.8819                     | Hardware: Galvanized steel<br>Rubber gasket: (EPDM) rubber | 6.1                      |

## L'installation

For new concrete walls, install over the pipe and Ecoflex compression wall seals into the wall sleeve for a watertight seal. For an existing wall with a field core drill, install between core drill surface and outer jacket of the Ecoflex pipe. Refer to the Uponor Pre-insulated Pipe Systems Design and Installation Manual for more information.

## Applications connexes

- Pre-Insulated Pipe Systems
- Radiant Heating and Cooling Systems
- Permafrost Protection Systems
- Turf Conditioning Systems

## Remarques :

Core Drill OD - 4.75"

Core Drill OD - 8"

Core Drill OD - 10"

## Notes de bas de page

## Coordonnées de la personne-ressource

Uponor Inc.  
5925 148th Street West  
Apple Valley, MN 55124  
T 800.321.4739  
F 952.891.2008

Uponor Ltd.  
6510 Kennedy Road  
Mississauga, ON L5T 2X4  
T 888.594.7726  
F 800.638.9517