

ChlorFIT Reductor Casquillo

Project Information

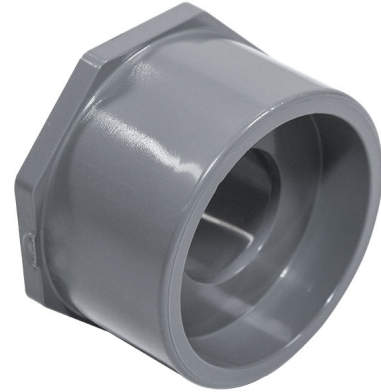
| | |
|--------------------------------|-----------------|
| Job name: | Location: |
| Engineer: | Fecha de envío: |
| Contractor: | Presentada por: |
| Manufacturer's representative: | Approved by: |

Technical data

Material CPVC

Product information and application use

Utilice los bujes reductores de CPVC Corzan® ChlorFIT® Schedule 80 de Uponor en sistemas de agua potable fría y caliente, así como en aplicaciones hidráulicas de calefacción y refrigeración.



| Part name | Part no. | A [Inch] | B [Inch] | C [Inch] | D [Inch] | E [Inch] | F [Inch] | G [Inch] | H [Inch] | I [Inch] | End Type 1 |
|---|----------|----------|----------|----------|----------|----------|----------|----------|----------|----------|---------------|
| 3/4" x 1/2" CPVC 80 Reducing Bushing, Flush Style (SpgxS) | 9837101 | 1.363 | 1.281 | 1.05 | 0.42 | 0.265 | 0.356 | 0.306 | 0.31 | 0.093 | Spigot 3/4" |
| 1" x 1/2" CPVC 80 Reducing Bushing, Flush Style (SpgxS) | 9837130 | 1.732 | 1.13 | 1.315 | 0.42 | 0.265 | 0.472 | 0.128 | 0.313 | 0.12 | Spigot 1" |
| 1" x 3/4" CPVC 80 Reducing Bushing, Flush Style (SpgxS) | 9837131 | 1.732 | 1.13 | 1.315 | 0.525 | 0.265 | 0.472 | 0.002 | 0.418 | 0.12 | Spigot 1" |
| 1-1/4" x 1/2" CPVC 80 Reducing Bushing, Flush Style (SpgxS) | 9837166 | 2.026 | 1.563 | 1.66 | 0.42 | 0.288 | 0.631 | 0.496 | 0.311 | 0.178 | Spigot 1-1/4" |
| 1-1/4" x 3/4" CPVC 80 Reducing Bushing, Flush Style (SpgxS) | 9837167 | 2.183 | 1.53 | 1.66 | 0.525 | 0.28 | 0.639 | 0.402 | 0.412 | 0.12 | Spigot 1-1/4" |
| 1-1/4" x 1" CPVC 80 Reducing Bushing, Flush Style (SpgxS) | 9837168 | 2.183 | 1.531 | 1.66 | 0.657 | 0.28 | 0.64 | 0.278 | 0.524 | 0.12 | Spigot 1-1/4" |
| 1-1/2" x 1/2" CPVC 80 Reducing Bushing, Flush Style (SpgxS) | 9837209 | 2.413 | 1.656 | 1.9 | 0.311 | 0.28 | 0.75 | 0.654 | 0.311 | 1.002 | Spigot 1-1/2" |
| 1-1/2" x 3/4" CPVC 80 Reducing Bushing, Flush Style (SpgxS) | 9837210 | 2.413 | 1.665 | 1.9 | 0.525 | 0.28 | 0.743 | 0.537 | 0.412 | 0.12 | Spigot 1-1/2" |
| 1-1/2" x 1" CPVC 80 Reducing Bushing, Flush Style (SpgxS) | 9837211 | 2.465 | 1.665 | 1.9 | 0.657 | 0.28 | 0.743 | 0.412 | 0.525 | 0.12 | Spigot 1-1/2" |
| 1-1/2" x 1-1/4" CPVC 80 Reducing Bushing, Flush Style (SpgxS) | 9837212 | 2.442 | 1.67 | 1.9 | 0.83 | 0.28 | 0.75 | 0.292 | 0.69 | 0.12 | Spigot 1-1/2" |
| 2" x 1/2" CPVC 80 Reducing Bushing, Flush Style (SpgxS) | 9837247 | 2.979 | 1.78 | 2.375 | 0.42 | 0.28 | 0.97 | 0.778 | 0.311 | 0.12 | Spigot 2" |
| 2" x 3/4" CPVC 80 Reducing Bushing, Flush Style (SpgxS) | 9837248 | 2.956 | 1.781 | 2.375 | 0.525 | 0.28 | 0.97 | 0.653 | 0.412 | 0.12 | Spigot 2" |
| 2" x 1" CPVC 80 Reducing Bushing, Flush Style (SpgxS) | 9837249 | 2.956 | 1.781 | 2.375 | 0.657 | 0.28 | 0.97 | 0.528 | 0.524 | 0.12 | Spigot 2" |
| 2" x 1-1/4" CPVC 80 Reducing Bushing, Flush Style (SpgxS) | 9837250 | 2.979 | 1.8 | 2.375 | 0.83 | 0.28 | 0.97 | 0.422 | 0.69 | 0.12 | Spigot 2" |
| 2" x 1-1/2" CPVC 80 Reducing Bushing, Flush Style (SpgxS) | 9837251 | 2.956 | 1.78 | 2.375 | 0.95 | 0.28 | 0.97 | 0.277 | 0.738 | 0.12 | Spigot 2" |
| 2-1/2" x 1-1/2" CPVC 80 Reducing Bushing, Flush Style (SpgxS) | 9837291 | 3.533 | 2.2 | 2.875 | 0.95 | 0.37 | 1.148 | 0.697 | 0.785 | 0.12 | Spigot 2-1/2" |
| 2-1/2" x 2" CPVC 80 Reducing Bushing, Flush Style (SpgxS) | 9837292 | 3.533 | 2.078 | 2.875 | 1.188 | 0.25 | 1.23 | 0.369 | 1.01 | 0.2 | Spigot 2-1/2" |
| 3" x 1" CPVC 80 Reducing Bushing, Flush Style (SpgxS) | 9837335 | 4.272 | 2.415 | 3.5 | 0.657 | 0.457 | 1.436 | 1.078 | 0.487 | 0.195 | Spigot 3" |
| 3" x 1-1/2" CPVC 80 Reducing Bushing, Flush Style (SpgxS) | 9837337 | 4.261 | 2.4 | 3.5 | 0.95 | 0.45 | 1.435 | 0.817 | 0.815 | 0.2 | Spigot 3" |
| 3" x 2" CPVC 80 Reducing Bushing, Flush Style | 9837338 | 4.261 | 2.4 | 3.5 | 1.188 | 0.38 | 1.435 | 0.691 | 1.01 | 0.2 | Spigot |

| | | | | | | | | | | | | |
|---|-----------|--------|-------|-------|-------|-------|-------|-------|-------|-------|--|-----------|
| (SpgxS) | | | | | | | | | | | | 3" |
| 3" x 2-1/2" CPVC 80 Reducing Bushing, Flush Style (SpgxS) | 9837339 | 4.261 | 2.313 | 3.5 | 1.438 | 0.38 | 1.54 | 0.323 | 1.2 | 0.2 | | Spigot 3" |
| 4" x 2" CPVC 80 Reducing Bushing, Flush Style (SpgxS) | 9837420 | 5.485 | 2.708 | 4.5 | 1.188 | 0.38 | 1.895 | 0.949 | 1 | 0.25 | | Spigot 4" |
| 4" x 2-1/2" CPVC 80 Reducing Bushing, Flush Style (SpgxS), Bushed | 9837421FB | 5.626 | 3.043 | 4.5 | 1.437 | 0.684 | 1.81 | 0.517 | 1.654 | 0.633 | | Spigot 4" |
| 4" x 3" CPVC 80 Reducing Bushing, Flush Style (SpgxS) | 9837422 | 5.485 | 2.688 | 4.5 | 1.75 | 0.38 | 1.99 | 0.548 | 1.5 | 0.25 | | Spigot 4" |
| 6" x 2-1/2" CPVC 80 Reducing Bushing, Flush Style (SpgxS), Bushed | 9837529FB | 8.011 | 3.957 | 6.625 | 1.437 | 0.816 | 2.848 | 1.459 | 1.558 | 0.605 | | Spigot 6" |
| 6" x 3" CPVC 80 Reducing Bushing, Flush Style (SpgxS) | 9837530 | 7.944 | 3.59 | 6.625 | 1.75 | 0.496 | 2.89 | 1.45 | 1.56 | 0.25 | | Spigot 6" |
| 6" x 4" CPVC 80 Reducing Bushing, Flush Style (SpgxS) | 9837532 | 7.944 | 3.59 | 6.625 | 2.25 | 0.496 | 2.89 | 1.07 | 2 | 0.25 | | Spigot 6" |
| 8" x 4" CPVC 80 Reducing Bushing, Flush Style (SpgxS), Bushed, 2 Step | 9837582FB | 10.476 | 5.357 | 8.625 | 2.25 | 1.261 | 3.702 | 1.178 | 3.054 | 1.933 | | Spigot 8" |
| 8" x 6" CPVC 80 Reducing Bushing, Flush Style (SpgxS) | 9837585 | 10.254 | 4.66 | 8.625 | 3.313 | 0.56 | 3.78 | 1.26 | 3.125 | 0.38 | | Spigot 8" |

| Part name | Part no. | End Type 2 | Operating Temperature 1 [°F] | Operating Temperature 2 [°F] | Weight per UOM [lbs/UOM] |
|---|-----------|---------------|----------------------------------|-----------------------------------|--------------------------|
| 3/4" x 1/2" CPVC 80 Reducing Bushing, Flush Style (SpgxS) | 9837101 | Socket 1/2" | 73 °F (23 °C) at 690 psi (23 °C) | 180 °F (82 °C) at 170 psi (82 °C) | 0.03 |
| 1" x 1/2" CPVC 80 Reducing Bushing, Flush Style (SpgxS) | 9837130 | Socket 1/2" | 73 °F (23 °C) at 630 psi (23 °C) | 180 °F (82 °C) at 155 psi (82 °C) | 0.07 |
| 1" x 3/4" CPVC 80 Reducing Bushing, Flush Style (SpgxS) | 9837131 | Socket 3/4" | 73 °F (23 °C) at 630 psi (23 °C) | 180 °F (82 °C) at 155 psi (82 °C) | 0.05 |
| 1-1/4" x 1/2" CPVC 80 Reducing Bushing, Flush Style (SpgxS) | 9837166 | Socket 1/2" | 73 °F (23 °C) at 520 psi (23 °C) | 180 °F (82 °C) at 130 psi (82 °C) | 0.11 |
| 1-1/4" x 3/4" CPVC 80 Reducing Bushing, Flush Style (SpgxS) | 9837167 | Socket 3/4" | 73 °F (23 °C) at 520 psi (23 °C) | 180 °F (82 °C) at 130 psi (82 °C) | 0.11 |
| 1-1/4" x 1" CPVC 80 Reducing Bushing, Flush Style (SpgxS) | 9837168 | Socket 1" | 73 °F (23 °C) at 520 psi (23 °C) | 180 °F (82 °C) at 130 psi (82 °C) | 0.11 |
| 1-1/2" x 1/2" CPVC 80 Reducing Bushing, Flush Style (SpgxS) | 9837209 | Socket 1/2" | 73 °F (23 °C) at 470 psi (23 °C) | 180 °F (82 °C) at 115 psi (82 °C) | 0.16 |
| 1-1/2" x 3/4" CPVC 80 Reducing Bushing, Flush Style (SpgxS) | 9837210 | Socket 3/4" | 73 °F (23 °C) at 470 psi (23 °C) | 180 °F (82 °C) at 115 psi (82 °C) | 0.17 |
| 1-1/2" x 1" CPVC 80 Reducing Bushing, Flush Style (SpgxS) | 9837211 | Socket 1" | 73 °F (23 °C) at 470 psi (23 °C) | 180 °F (82 °C) at 115 psi (82 °C) | 0.14 |
| 1-1/2" x 1-1/4" CPVC 80 Reducing Bushing, Flush Style (SpgxS) | 9837212 | Socket 1-1/4" | 73 °F (23 °C) at 470 psi (23 °C) | 180 °F (82 °C) at 115 psi (82 °C) | 0.09 |
| 2" x 1/2" CPVC 80 Reducing Bushing, Flush Style (SpgxS) | 9837247 | Socket 1/2" | 73 °F (23 °C) at 400 psi (23 °C) | 180 °F (82 °C) at 100 psi (82 °C) | 0.23 |
| 2" x 3/4" CPVC 80 Reducing Bushing, Flush Style (SpgxS) | 9837248 | Socket 3/4" | 73 °F (23 °C) at 400 psi (23 °C) | 180 °F (82 °C) at 100 psi (82 °C) | 0.24 |
| 2" x 1" CPVC 80 Reducing Bushing, Flush Style (SpgxS) | 9837249 | Socket 1" | 73 °F (23 °C) at 400 psi (23 °C) | 180 °F (82 °C) at 100 psi (82 °C) | 0.24 |
| 2" x 1-1/4" CPVC 80 Reducing Bushing, Flush Style (SpgxS) | 9837250 | Socket 1-1/4" | 73 °F (23 °C) at 400 psi (23 °C) | 180 °F (82 °C) at 100 psi (82 °C) | 0.22 |
| 2" x 1-1/2" CPVC 80 Reducing Bushing, Flush Style (SpgxS) | 9837251 | Socket 1-1/2" | 73 °F (23 °C) at 400 psi (23 °C) | 180 °F (82 °C) at 100 psi (82 °C) | 0.18 |
| 2-1/2" x 1-1/2" CPVC 80 Reducing Bushing, Flush Style (SpgxS) | 9837291 | Socket 1-1/2" | 73 °F (23 °C) at 420 psi (23 °C) | 180 °F (82 °C) at 105 psi (82 °C) | 0.39 |
| 2-1/2" x 2" CPVC 80 Reducing Bushing, Flush Style (SpgxS) | 9837292 | Socket 2" | 73 °F (23 °C) at 420 psi (23 °C) | 180 °F (82 °C) at 105 psi (82 °C) | 0.26 |
| 3" x 1" CPVC 80 Reducing Bushing, Flush Style (SpgxS) | 9837335 | Socket 1" | 73 °F (23 °C) at 370 psi (23 °C) | 180 °F (82 °C) at 90 psi (82 °C) | 1.03 |
| 3" x 1-1/2" CPVC 80 Reducing Bushing, Flush Style (SpgxS) | 9837337 | Socket 1-1/2" | 73 °F (23 °C) at 370 psi (23 °C) | 180 °F (82 °C) at 90 psi (82 °C) | 0.74 |
| 3" x 2" CPVC 80 Reducing Bushing, Flush Style (SpgxS) | 9837338 | Socket 2" | 73 °F (23 °C) at 370 psi (23 °C) | 180 °F (82 °C) at 90 psi (82 °C) | 0.79 |
| 3" x 2-1/2" CPVC 80 Reducing Bushing, Flush Style (SpgxS) | 9837339 | Socket 2-1/2" | 73 °F (23 °C) at 370 psi (23 °C) | 180 °F (82 °C) at 90 psi (82 °C) | 0.51 |
| 4" x 2" CPVC 80 Reducing Bushing, Flush Style (SpgxS) | 9837420 | Socket 2" | 73 °F (23 °C) at 320 psi (23 °C) | 180 °F (82 °C) at 80 psi (82 °C) | 1.26 |
| 4" x 2-1/2" CPVC 80 Reducing Bushing, Flush Style (SpgxS), Bushed | 9837421FB | Socket 2-1/2" | 73 °F (23 °C) at 320 psi (23 °C) | 180 °F (82 °C) at 80 psi (82 °C) | 1.44 |

| | | | | | |
|---|-----------|---------------|----------------------------------|----------------------------------|------|
| 4" x 3" CPVC 80 Reducing Bushing, Flush Style (SpgxS) | 9837422 | Socket 3" | 73 °F (23 °C) at 320 psi (23 °C) | 180 °F (82 °C) at 80 psi (82 °C) | 0.93 |
| 6" x 2-1/2" CPVC 80 Reducing Bushing, Flush Style (SpgxS), Bushed | 9837529FB | Socket 2-1/2" | 73 °F (23 °C) at 280 psi (23 °C) | 180 °F (82 °C) at 70 psi (82 °C) | 3.99 |
| 6" x 3" CPVC 80 Reducing Bushing, Flush Style (SpgxS) | 9837530 | Socket 3" | 73 °F (23 °C) at 280 psi (23 °C) | 180 °F (82 °C) at 70 psi (82 °C) | 3.48 |
| 6" x 4" CPVC 80 Reducing Bushing, Flush Style (SpgxS) | 9837532 | Socket 4" | 73 °F (23 °C) at 280 psi (23 °C) | 180 °F (82 °C) at 70 psi (82 °C) | 3.92 |
| 8" x 4" CPVC 80 Reducing Bushing, Flush Style (SpgxS), Bushed, 2 Step | 9837582FB | Socket 4" | 73 °F (23 °C) at 250 psi (23 °C) | 180 °F (82 °C) at 60 psi (82 °C) | 8.57 |
| 8" x 6" CPVC 80 Reducing Bushing, Flush Style (SpgxS) | 9837585 | Socket 6" | 73 °F (23 °C) at 250 psi (23 °C) | 180 °F (82 °C) at 60 psi (82 °C) | 4.59 |

| Part name | Part no. | Codes | Standards | Listings |
|---|-----------|------------------------------|---------------------------------------|----------------------------|
| ChlorFIT Reductor Casquillo | All | UPC IBC IRC IPC UMC NSPC IMC | ASTM F439 NSF/ANSI/CAN 61 NSF/ANSI 14 | ULC NSFpw-G IAPMO U.P.Code |
| In addition, the following parts have additional codes, standards, or listings: | | | | |
| 3/4" x 1/2" CPVC 80 Reducing Bushing, Flush Style (SpgxS) | 9837101 | | | ICC-ES-PMG |
| 1" x 1/2" CPVC 80 Reducing Bushing, Flush Style (SpgxS) | 9837130 | | | ICC-ES-PMG |
| 1" x 3/4" CPVC 80 Reducing Bushing, Flush Style (SpgxS) | 9837131 | | | ICC-ES-PMG |
| 1-1/4" x 1/2" CPVC 80 Reducing Bushing, Flush Style (SpgxS) | 9837166 | | | ICC-ES-PMG |
| 1-1/4" x 3/4" CPVC 80 Reducing Bushing, Flush Style (SpgxS) | 9837167 | | | ICC-ES-PMG |
| 1-1/4" x 1" CPVC 80 Reducing Bushing, Flush Style (SpgxS) | 9837168 | | | ICC-ES-PMG |
| 1-1/2" x 1/2" CPVC 80 Reducing Bushing, Flush Style (SpgxS) | 9837209 | | | ICC-ES-PMG |
| 1-1/2" x 3/4" CPVC 80 Reducing Bushing, Flush Style (SpgxS) | 9837210 | | | ICC-ES-PMG |
| 1-1/2" x 1" CPVC 80 Reducing Bushing, Flush Style (SpgxS) | 9837211 | | | ICC-ES-PMG |
| 1-1/2" x 1-1/4" CPVC 80 Reducing Bushing, Flush Style (SpgxS) | 9837212 | | | ICC-ES-PMG |
| 2" x 1/2" CPVC 80 Reducing Bushing, Flush Style (SpgxS) | 9837247 | | | ICC-ES-PMG |
| 2" x 3/4" CPVC 80 Reducing Bushing, Flush Style (SpgxS) | 9837248 | | | ICC-ES-PMG |
| 2" x 1" CPVC 80 Reducing Bushing, Flush Style (SpgxS) | 9837249 | | | ICC-ES-PMG |
| 2" x 1-1/4" CPVC 80 Reducing Bushing, Flush Style (SpgxS) | 9837250 | | | ICC-ES-PMG |
| 2" x 1-1/2" CPVC 80 Reducing Bushing, Flush Style (SpgxS) | 9837251 | | | ICC-ES-PMG |
| 2-1/2" x 1-1/2" CPVC 80 Reducing Bushing, Flush Style (SpgxS) | 9837291 | | | ICC-ES-PMG |
| 2-1/2" x 2" CPVC 80 Reducing Bushing, Flush Style (SpgxS) | 9837292 | | | ICC-ES-PMG |
| 3" x 1" CPVC 80 Reducing Bushing, Flush Style (SpgxS) | 9837335 | | | ICC-ES-PMG |
| 3" x 1-1/2" CPVC 80 Reducing Bushing, Flush Style (SpgxS) | 9837337 | | | ICC-ES-PMG |
| 3" x 2" CPVC 80 Reducing Bushing, Flush Style (SpgxS) | 9837338 | | | ICC-ES-PMG |
| 3" x 2-1/2" CPVC 80 Reducing Bushing, Flush Style (SpgxS) | 9837339 | | | ICC-ES-PMG |
| 4" x 2" CPVC 80 Reducing Bushing, Flush Style (SpgxS) | 9837420 | | | ICC-ES-PMG |
| 4" x 2-1/2" CPVC 80 Reducing Bushing, Flush Style (SpgxS), Bushed | 9837421FB | | | ICC-ES-PMG |
| 4" x 3" CPVC 80 Reducing Bushing, Flush Style (SpgxS) | 9837422 | | | ICC-ES-PMG |
| 6" x 2-1/2" CPVC 80 Reducing Bushing, Flush Style (SpgxS), Bushed | 9837529FB | | | ICC-ES-PMG |
| 6" x 3" CPVC 80 Reducing Bushing, Flush Style (SpgxS) | 9837530 | | | ICC-ES-PMG |
| 6" x 4" CPVC 80 Reducing Bushing, Flush Style (SpgxS) | 9837532 | | | ICC-ES-PMG |

Installation

Realice las conexiones mediante soldadura con solvente utilizando imprimación y cemento solvente diseñado específicamente para tuberías y accesorios de CPVC Cédula 80. Consulte el Manual de Uponor ChlorFIT o la Hoja de instrucciones de soldadura con solvente de Uponor ChlorFIT para obtener detalles completos.

Related applications

Agua doméstica
Tuberías hidráulicas

Uponor Inc.
5925 148th Street West
Apple Valley, MN 55124
T 800.321.4739
F 952.891.2008

Uponor Ltd.
6510 Kennedy Road
Mississauga, ON L5T 2X4
T 888.594.7726
F 800.638.9517
