

# ChlorFIT Reductor Casquillo

## Project Information

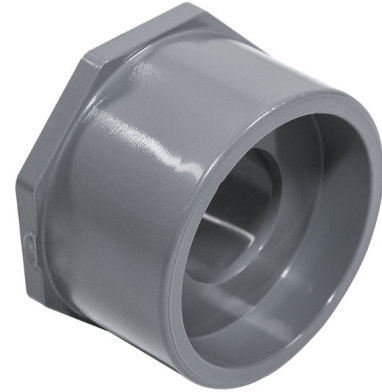
Job name:	Location:
Engineer:	Fecha de envío:
Contractor:	Presentada por:
Manufacturer's representative:	Approved by:

## Technical data

Material CPVC

## Product information and application use

Utilice los bujes reductores de CPVC Corzan® ChlorFIT® Schedule 80 de Uponor en sistemas de agua potable fría y caliente, así como en aplicaciones hidráulicas de calefacción y refrigeración.



Part name	Part no.	A [Inch]	B [Inch]	C [Inch]	D [Inch]	E [Inch]	F [Inch]	G [Inch]	H [Inch]	I [Inch]	End Type 1
3/4" x 1/2" CPVC 80 Reducing Bushing, Flush Style (SpgxS)	9837101	1.363	1.281	1.05	0.42	0.265	0.356	0.306	0.31	0.093	Spigot 3/4"
1" x 1/2" CPVC 80 Reducing Bushing, Flush Style (SpgxS)	9837130	1.732	1.13	1.315	0.42	0.265	0.472	0.128	0.313	0.12	Spigot 1"
1" x 3/4" CPVC 80 Reducing Bushing, Flush Style (SpgxS)	9837131	1.732	1.13	1.315	0.525	0.265	0.472	0.002	0.418	0.12	Spigot 1"
1-1/4" x 1/2" CPVC 80 Reducing Bushing, Flush Style (SpgxS)	9837166	2.026	1.563	1.66	0.42	0.288	0.631	0.496	0.311	0.178	Spigot 1-1/4"
1-1/4" x 3/4" CPVC 80 Reducing Bushing, Flush Style (SpgxS)	9837167	2.183	1.53	1.66	0.525	0.28	0.639	0.402	0.412	0.12	Spigot 1-1/4"
1-1/4" x 1" CPVC 80 Reducing Bushing, Flush Style (SpgxS)	9837168	2.183	1.531	1.66	0.657	0.28	0.64	0.278	0.524	0.12	Spigot 1-1/4"
1-1/2" x 1/2" CPVC 80 Reducing Bushing, Flush Style (SpgxS)	9837209	2.413	1.656	1.9	0.311	0.28	0.75	0.654	0.311	1.002	Spigot 1-1/2"
1-1/2" x 3/4" CPVC 80 Reducing Bushing, Flush Style (SpgxS)	9837210	2.413	1.665	1.9	0.525	0.28	0.743	0.537	0.412	0.12	Spigot 1-1/2"
1-1/2" x 1" CPVC 80 Reducing Bushing, Flush Style (SpgxS)	9837211	2.465	1.665	1.9	0.657	0.28	0.743	0.412	0.525	0.12	Spigot 1-1/2"
1-1/2" x 1-1/4" CPVC 80 Reducing Bushing, Flush Style (SpgxS)	9837212	2.442	1.67	1.9	0.83	0.28	0.75	0.292	0.69	0.12	Spigot 1-1/2"
2" x 1/2" CPVC 80 Reducing Bushing, Flush Style (SpgxS)	9837247	2.979	1.78	2.375	0.42	0.28	0.97	0.778	0.311	0.12	Spigot 2"
2" x 3/4" CPVC 80 Reducing Bushing, Flush Style (SpgxS)	9837248	2.956	1.781	2.375	0.525	0.28	0.97	0.653	0.412	0.12	Spigot 2"
2" x 1" CPVC 80 Reducing Bushing, Flush Style (SpgxS)	9837249	2.956	1.781	2.375	0.657	0.28	0.97	0.528	0.524	0.12	Spigot 2"
2" x 1-1/4" CPVC 80 Reducing Bushing, Flush Style (SpgxS)	9837250	2.979	1.8	2.375	0.83	0.28	0.97	0.422	0.69	0.12	Spigot 2"
2" x 1-1/2" CPVC 80 Reducing Bushing, Flush Style (SpgxS)	9837251	2.956	1.78	2.375	0.95	0.28	0.97	0.277	0.738	0.12	Spigot 2"
2-1/2" x 1-1/2" CPVC 80 Reducing Bushing, Flush Style (SpgxS)	9837291	3.533	2.2	2.875	0.95	0.37	1.148	0.697	0.785	0.12	Spigot 2-1/2"
2-1/2" x 2" CPVC 80 Reducing Bushing, Flush Style (SpgxS)	9837292	3.533	2.078	2.875	1.188	0.25	1.23	0.369	1.01	0.2	Spigot 2-1/2"
3" x 1" CPVC 80 Reducing Bushing, Flush Style (SpgxS)	9837335	4.272	2.415	3.5	0.657	0.457	1.436	1.078	0.487	0.195	Spigot 3"
3" x 1-1/2" CPVC 80 Reducing Bushing, Flush Style (SpgxS)	9837337	4.261	2.4	3.5	0.95	0.45	1.435	0.817	0.815	0.2	Spigot 3"
3" x 2" CPVC 80 Reducing Bushing, Flush Style	9837338	4.261	2.4	3.5	1.188	0.38	1.435	0.691	1.01	0.2	Spigot

(SpgxS)												3"
3" x 2-1/2" CPVC 80 Reducing Bushing, Flush Style (SpgxS)	9837339	4.261	2.313	3.5	1.438	0.38	1.54	0.323	1.2	0.2		Spigot 3"
4" x 2" CPVC 80 Reducing Bushing, Flush Style (SpgxS)	9837420	5.485	2.708	4.5	1.188	0.38	1.895	0.949	1	0.25		Spigot 4"
4" x 2-1/2" CPVC 80 Reducing Bushing, Flush Style (SpgxS), Bushed	9837421FB	5.626	3.043	4.5	1.437	0.684	1.81	0.517	1.654	0.633		Spigot 4"
4" x 3" CPVC 80 Reducing Bushing, Flush Style (SpgxS)	9837422	5.485	2.688	4.5	1.75	0.38	1.99	0.548	1.5	0.25		Spigot 4"
6" x 2-1/2" CPVC 80 Reducing Bushing, Flush Style (SpgxS), Bushed	9837529FB	8.011	3.957	6.625	1.437	0.816	2.848	1.459	1.558	0.605		Spigot 6"
6" x 3" CPVC 80 Reducing Bushing, Flush Style (SpgxS)	9837530	7.944	3.59	6.625	1.75	0.496	2.89	1.45	1.56	0.25		Spigot 6"
6" x 4" CPVC 80 Reducing Bushing, Flush Style (SpgxS)	9837532	7.944	3.59	6.625	2.25	0.496	2.89	1.07	2	0.25		Spigot 6"
8" x 4" CPVC 80 Reducing Bushing, Flush Style (SpgxS), Bushed, 2 Step	9837582FB	10.476	5.357	8.625	2.25	1.261	3.702	1.178	3.054	1.933		Spigot 8"
8" x 6" CPVC 80 Reducing Bushing, Flush Style (SpgxS)	9837585	10.254	4.66	8.625	3.313	0.56	3.78	1.26	3.125	0.38		Spigot 8"

Part name	Part no.	End Type 2	Operating Temperature 1 [°F]	Operating Temperature 2 [°F]	Weight per UOM [lbs/UOM]
3/4" x 1/2" CPVC 80 Reducing Bushing, Flush Style (SpgxS)	9837101	Socket 1/2"	73 °F (23 °C) at 690 psi (23 °C)	180 °F (82 °C) at 170 psi (82 °C)	0.03
1" x 1/2" CPVC 80 Reducing Bushing, Flush Style (SpgxS)	9837130	Socket 1/2"	73 °F (23 °C) at 630 psi (23 °C)	180 °F (82 °C) at 155 psi (82 °C)	0.07
1" x 3/4" CPVC 80 Reducing Bushing, Flush Style (SpgxS)	9837131	Socket 3/4"	73 °F (23 °C) at 630 psi (23 °C)	180 °F (82 °C) at 155 psi (82 °C)	0.05
1-1/4" x 1/2" CPVC 80 Reducing Bushing, Flush Style (SpgxS)	9837166	Socket 1/2"	73 °F (23 °C) at 520 psi (23 °C)	180 °F (82 °C) at 130 psi (82 °C)	0.11
1-1/4" x 3/4" CPVC 80 Reducing Bushing, Flush Style (SpgxS)	9837167	Socket 3/4"	73 °F (23 °C) at 520 psi (23 °C)	180 °F (82 °C) at 130 psi (82 °C)	0.11
1-1/4" x 1" CPVC 80 Reducing Bushing, Flush Style (SpgxS)	9837168	Socket 1"	73 °F (23 °C) at 520 psi (23 °C)	180 °F (82 °C) at 130 psi (82 °C)	0.11
1-1/2" x 1/2" CPVC 80 Reducing Bushing, Flush Style (SpgxS)	9837209	Socket 1/2"	73 °F (23 °C) at 470 psi (23 °C)	180 °F (82 °C) at 115 psi (82 °C)	0.16
1-1/2" x 3/4" CPVC 80 Reducing Bushing, Flush Style (SpgxS)	9837210	Socket 3/4"	73 °F (23 °C) at 470 psi (23 °C)	180 °F (82 °C) at 115 psi (82 °C)	0.17
1-1/2" x 1" CPVC 80 Reducing Bushing, Flush Style (SpgxS)	9837211	Socket 1"	73 °F (23 °C) at 470 psi (23 °C)	180 °F (82 °C) at 115 psi (82 °C)	0.14
1-1/2" x 1-1/4" CPVC 80 Reducing Bushing, Flush Style (SpgxS)	9837212	Socket 1-1/4"	73 °F (23 °C) at 470 psi (23 °C)	180 °F (82 °C) at 115 psi (82 °C)	0.09
2" x 1/2" CPVC 80 Reducing Bushing, Flush Style (SpgxS)	9837247	Socket 1/2"	73 °F (23 °C) at 400 psi (23 °C)	180 °F (82 °C) at 100 psi (82 °C)	0.23
2" x 3/4" CPVC 80 Reducing Bushing, Flush Style (SpgxS)	9837248	Socket 3/4"	73 °F (23 °C) at 400 psi (23 °C)	180 °F (82 °C) at 100 psi (82 °C)	0.24
2" x 1" CPVC 80 Reducing Bushing, Flush Style (SpgxS)	9837249	Socket 1"	73 °F (23 °C) at 400 psi (23 °C)	180 °F (82 °C) at 100 psi (82 °C)	0.24
2" x 1-1/4" CPVC 80 Reducing Bushing, Flush Style (SpgxS)	9837250	Socket 1-1/4"	73 °F (23 °C) at 400 psi (23 °C)	180 °F (82 °C) at 100 psi (82 °C)	0.22
2" x 1-1/2" CPVC 80 Reducing Bushing, Flush Style (SpgxS)	9837251	Socket 1-1/2"	73 °F (23 °C) at 400 psi (23 °C)	180 °F (82 °C) at 100 psi (82 °C)	0.18
2-1/2" x 1-1/2" CPVC 80 Reducing Bushing, Flush Style (SpgxS)	9837291	Socket 1-1/2"	73 °F (23 °C) at 420 psi (23 °C)	180 °F (82 °C) at 105 psi (82 °C)	0.39
2-1/2" x 2" CPVC 80 Reducing Bushing, Flush Style (SpgxS)	9837292	Socket 2"	73 °F (23 °C) at 420 psi (23 °C)	180 °F (82 °C) at 105 psi (82 °C)	0.26
3" x 1" CPVC 80 Reducing Bushing, Flush Style (SpgxS)	9837335	Socket 1"	73 °F (23 °C) at 370 psi (23 °C)	180 °F (82 °C) at 90 psi (82 °C)	1.03
3" x 1-1/2" CPVC 80 Reducing Bushing, Flush Style (SpgxS)	9837337	Socket 1-1/2"	73 °F (23 °C) at 370 psi (23 °C)	180 °F (82 °C) at 90 psi (82 °C)	0.74
3" x 2" CPVC 80 Reducing Bushing, Flush Style (SpgxS)	9837338	Socket 2"	73 °F (23 °C) at 370 psi (23 °C)	180 °F (82 °C) at 90 psi (82 °C)	0.79
3" x 2-1/2" CPVC 80 Reducing Bushing, Flush Style (SpgxS)	9837339	Socket 2-1/2"	73 °F (23 °C) at 370 psi (23 °C)	180 °F (82 °C) at 90 psi (82 °C)	0.51
4" x 2" CPVC 80 Reducing Bushing, Flush Style (SpgxS)	9837420	Socket 2"	73 °F (23 °C) at 320 psi (23 °C)	180 °F (82 °C) at 80 psi (82 °C)	1.26
4" x 2-1/2" CPVC 80 Reducing Bushing, Flush Style (SpgxS), Bushed	9837421FB	Socket 2-1/2"	73 °F (23 °C) at 320 psi (23 °C)	180 °F (82 °C) at 80 psi (82 °C)	1.44

4" x 3" CPVC 80 Reducing Bushing, Flush Style (SpgxS)	9837422	Socket 3"	73 °F (23 °C) at 320 psi (23 °C)	180 °F (82 °C) at 80 psi (82 °C)	0.93
6" x 2-1/2" CPVC 80 Reducing Bushing, Flush Style (SpgxS), Bushed	9837529FB	Socket 2-1/2"	73 °F (23 °C) at 280 psi (23 °C)	180 °F (82 °C) at 70 psi (82 °C)	3.99
6" x 3" CPVC 80 Reducing Bushing, Flush Style (SpgxS)	9837530	Socket 3"	73 °F (23 °C) at 280 psi (23 °C)	180 °F (82 °C) at 70 psi (82 °C)	3.48
6" x 4" CPVC 80 Reducing Bushing, Flush Style (SpgxS)	9837532	Socket 4"	73 °F (23 °C) at 280 psi (23 °C)	180 °F (82 °C) at 70 psi (82 °C)	3.92
8" x 4" CPVC 80 Reducing Bushing, Flush Style (SpgxS), Bushed, 2 Step	9837582FB	Socket 4"	73 °F (23 °C) at 250 psi (23 °C)	180 °F (82 °C) at 60 psi (82 °C)	8.57
8" x 6" CPVC 80 Reducing Bushing, Flush Style (SpgxS)	9837585	Socket 6"	73 °F (23 °C) at 250 psi (23 °C)	180 °F (82 °C) at 60 psi (82 °C)	4.59

Part name	Part no.	Codes	Standards	Listings
ChlorFIT Reductor Casquillo	All	UPC IBC IRC IPC UMC NSPC IMC	ASTM F439 NSF/ANSI/CAN 61 NSF/ANSI 14	ULC NSFpw-G IAPMO U.P.Code
In addition, the following parts have additional codes, standards, or listings:				
3/4" x 1/2" CPVC 80 Reducing Bushing, Flush Style (SpgxS)	9837101			ICC-ES-PMG
1" x 1/2" CPVC 80 Reducing Bushing, Flush Style (SpgxS)	9837130			ICC-ES-PMG
1" x 3/4" CPVC 80 Reducing Bushing, Flush Style (SpgxS)	9837131			ICC-ES-PMG
1-1/4" x 1/2" CPVC 80 Reducing Bushing, Flush Style (SpgxS)	9837166			ICC-ES-PMG
1-1/4" x 3/4" CPVC 80 Reducing Bushing, Flush Style (SpgxS)	9837167			ICC-ES-PMG
1-1/4" x 1" CPVC 80 Reducing Bushing, Flush Style (SpgxS)	9837168			ICC-ES-PMG
1-1/2" x 1/2" CPVC 80 Reducing Bushing, Flush Style (SpgxS)	9837209			ICC-ES-PMG
1-1/2" x 3/4" CPVC 80 Reducing Bushing, Flush Style (SpgxS)	9837210			ICC-ES-PMG
1-1/2" x 1" CPVC 80 Reducing Bushing, Flush Style (SpgxS)	9837211			ICC-ES-PMG
1-1/2" x 1-1/4" CPVC 80 Reducing Bushing, Flush Style (SpgxS)	9837212			ICC-ES-PMG
2" x 1/2" CPVC 80 Reducing Bushing, Flush Style (SpgxS)	9837247			ICC-ES-PMG
2" x 3/4" CPVC 80 Reducing Bushing, Flush Style (SpgxS)	9837248			ICC-ES-PMG
2" x 1" CPVC 80 Reducing Bushing, Flush Style (SpgxS)	9837249			ICC-ES-PMG
2" x 1-1/4" CPVC 80 Reducing Bushing, Flush Style (SpgxS)	9837250			ICC-ES-PMG
2" x 1-1/2" CPVC 80 Reducing Bushing, Flush Style (SpgxS)	9837251			ICC-ES-PMG
2-1/2" x 1-1/2" CPVC 80 Reducing Bushing, Flush Style (SpgxS)	9837291			ICC-ES-PMG
2-1/2" x 2" CPVC 80 Reducing Bushing, Flush Style (SpgxS)	9837292			ICC-ES-PMG
3" x 1" CPVC 80 Reducing Bushing, Flush Style (SpgxS)	9837335			ICC-ES-PMG
3" x 1-1/2" CPVC 80 Reducing Bushing, Flush Style (SpgxS)	9837337			ICC-ES-PMG
3" x 2" CPVC 80 Reducing Bushing, Flush Style (SpgxS)	9837338			ICC-ES-PMG
3" x 2-1/2" CPVC 80 Reducing Bushing, Flush Style (SpgxS)	9837339			ICC-ES-PMG
4" x 2" CPVC 80 Reducing Bushing, Flush Style (SpgxS)	9837420			ICC-ES-PMG
4" x 2-1/2" CPVC 80 Reducing Bushing, Flush Style (SpgxS), Bushed	9837421FB			ICC-ES-PMG
4" x 3" CPVC 80 Reducing Bushing, Flush Style (SpgxS)	9837422			ICC-ES-PMG
6" x 2-1/2" CPVC 80 Reducing Bushing, Flush Style (SpgxS), Bushed	9837529FB			ICC-ES-PMG
6" x 3" CPVC 80 Reducing Bushing, Flush Style (SpgxS)	9837530			ICC-ES-PMG
6" x 4" CPVC 80 Reducing Bushing, Flush Style (SpgxS)	9837532			ICC-ES-PMG

#### Installation

Realice las conexiones mediante soldadura con solvente utilizando imprimación y cemento solvente diseñado específicamente para tuberías y accesorios de CPVC Cédula 80. Consulte el Manual de Uponor ChlorFIT o la Hoja de instrucciones de soldadura con solvente de Uponor ChlorFIT para obtener detalles completos.

#### Related applications

Agua doméstica  
Tuberías hidráulicas

Uponor Inc.  
5925 148th Street West  
Apple Valley, MN 55124  
T 800.321.4739  
F 952.891.2008

Uponor Ltd.  
6510 Kennedy Road  
Mississauga, ON L5T 2X4  
T 888.594.7726  
F 800.638.9517

---