

# Accesorios ChlorFIT T recta

## Project Information

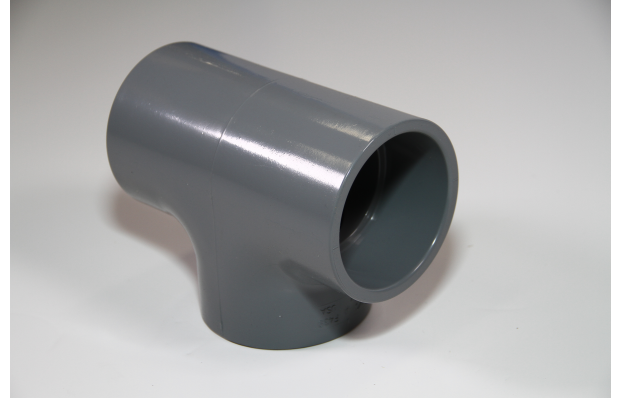
Job name:	Location:
Engineer:	Fecha de envío:
Contractor:	Presentada por:
Manufacturer's representative:	Approved by:

## Technical data

Material CPVC

## Product information and application use

Utilice las camisas de CPVC Corzan® ChlorFIT® Schedule 80 de Uponor en sistemas de agua potable fría y caliente, así como en aplicaciones de calefacción y refrigeración hidrónicas.



Part name	Part no.	A [inch]	B [inch]	C [inch]	D [inch]	E [inch]	F [inch]	G [inch]	H [inch]	I [inch]	J [inch]
1/2" CPVC 80 Tee (SxSxS)	9801005	0.802	0.58	0.58	0.802	2.764	0.42	0.962	1.962	0.58	1.16
3/4" CPVC 80 Tee (SxSxS)	9801007	0.875	0.695	0.695	0.875	3.14	0.525	1.045	2.265	0.695	1.39
1" CPVC 80 Tee (SxSxS)	9801010	0.965	0.855	0.855	0.965	3.64	0.657	1.163	2.675	0.855	1.71
1-1/4" CPVC 80 Tee (SxSxS)	9801012	1.12	1.04	1.04	1.12	4.32	0.83	1.33	3.2	1.04	2.08
1-1/2" CPVC 80 Tee (SxSxS)	9801015	1.243	1.167	1.167	1.243	4.82	0.95	1.46	3.578	1.167	2.335
2" CPVC 80 Tee (SxSxS)	9801020	1.352	1.437	1.437	1.352	5.58	1.187	1.602	4.228	1.437	2.875
2-1/2" CPVC 80 Tee (SxSxS)	9801025	1.54	1.75	1.75	1.54	6.58	1.437	1.852	5.04	1.75	3.5
3" CPVC 80 Tee (SxSxS)	9801030	1.625	2.075	2.075	1.625	7.4	1.75	1.95	5.775	2.075	4.15
4" CPVC 80 Tee (SxSxS)	9801040	1.965	2.615	2.615	1.965	9.16	2.25	2.33	7.195	2.615	5.23
6" CPVC 80 Tee (SxSxS)	9801060	2.78	3.78	3.78	2.78	13.12	3.313	3.248	10.34	3.78	7.56
8" CPVC 80 Tee (SxSxS)	9801080	3.79	4.85	4.85	3.79	17.28	4.313	4.328	13.49	4.85	9.7

Part name	Part no.	K [inch]	L [inch]	M [inch]	End Typ e 1	End Typ e 2	End Typ e 3	Operating Temperature 1 [°F]	Operating Temperature 2 [°F]	Weight per UOM [lbs/UOM]
1/2" CPVC 80 Tee (SxSxS)	9801005	0.882	0.882	0.882	Socket 1/2"	Socket 1/2"	Socket 1/2"	73 °F (23 °C) at 850 psi (23 °C)	180 °F (82 °C) at 210 psi (82 °C)	0.16
3/4" CPVC 80 Tee (SxSxS)	9801007	1.008	1.008	1.008	Socket 3/4"	Socket 3/4"	Socket 3/4"	73 °F (23 °C) at 690 psi (23 °C)	180 °F (82 °C) at 170 psi (82 °C)	0.18
1" CPVC 80 Tee (SxSxS)	9801010	1.133	1.133	1.133	Socket 1"	Socket 1"	Socket 1"	73 °F (23 °C) at 630 psi (23 °C)	180 °F (82 °C) at 155 psi (82 °C)	0.33
1-1/4" CPVC 80 Tee (SxSxS)	9801012	1.258	1.258	1.258	Socket 1-1/4"	Socket 1-1/4"	Socket 1-1/4"	73 °F (23 °C) at 520 psi (23 °C)	180 °F (82 °C) at 130 psi (82 °C)	0.47
1-1/2" CPVC 80 Tee (SxSxS)	9801015	1.383	1.383	1.383	Socket 1-1/2"	Socket 1-1/2"	Socket 1-1/2"	73 °F (23 °C) at 470 psi (23 °C)	180 °F (82 °C) at 115 psi (82 °C)	0.68
2" CPVC 80 Tee (SxSxS)	9801020	1.509	1.509	1.509	Socket 2"	Socket 2"	Socket 2"	73 °F (23 °C) at 400 psi (23 °C)	180 °F (82 °C) at 100 psi (82 °C)	0.97
2-1/2" CPVC 80 Tee (SxSxS)	9801025	1.79	1.79	1.79	Socket 2-1/2"	Socket 2-1/2"	Socket 2-1/2"	73 °F (23 °C) at 420 psi (23 °C)	180 °F (82 °C) at 105 psi (82 °C)	1.76

3" CPVC 80 Tee (SxSxS)	9801030	1.89	1.89	1.89	Socket 3"	Socket 3"	Socket 3"	73 °F (23 °C) at 370 psi (23 °C)	180 °F (82 °C) at 90 psi (82 °C)	2.56
4" CPVC 80 Tee (SxSxS)	9801040	2.27	2.27	2.27	Socket 4"	Socket 4"	Socket 4"	73 °F (23 °C) at 320 psi (23 °C)	180 °F (82 °C) at 80 psi (82 °C)	4.17
6" CPVC 80 Tee (SxSxS)	9801060	3.02	3.02	3.02	Socket 6"	Socket 6"	Socket 6"	73 °F (23 °C) at 280 psi (23 °C)	180 °F (82 °C) at 70 psi (82 °C)	12.02
8" CPVC 80 Tee (SxSxS)	9801080	4.094	4.094	4.094	Socket 8"	Socket 8"	Socket 8"	73 °F (23 °C) at 250 psi (23 °C)	180 °F (82 °C) at 60 psi (82 °C)	21.49

Part name	Part no.	Codes	Standards	Listings
Accesorios ChlorFIT T recta	All	UPC IBC IRC IPC UMC NSPC IMC	ASTM F439 NSF/ANSI/CAN 61 NSF/ANSI 14	ULC NSFpw-G IAPMO U.P.Code

In addition, the following parts have additional codes, standards, or listings:

1/2" CPVC 80 Tee (SxSxS)	9801005			ICC-ES-PMG
3/4" CPVC 80 Tee (SxSxS)	9801007			ICC-ES-PMG
1" CPVC 80 Tee (SxSxS)	9801010			ICC-ES-PMG
1-1/4" CPVC 80 Tee (SxSxS)	9801012			ICC-ES-PMG
1-1/2" CPVC 80 Tee (SxSxS)	9801015			ICC-ES-PMG
2" CPVC 80 Tee (SxSxS)	9801020			ICC-ES-PMG
2-1/2" CPVC 80 Tee (SxSxS)	9801025			ICC-ES-PMG
3" CPVC 80 Tee (SxSxS)	9801030			ICC-ES-PMG
4" CPVC 80 Tee (SxSxS)	9801040			ICC-ES-PMG
6" CPVC 80 Tee (SxSxS)	9801060			ICC-ES-PMG

Installation	Related applications
Realice las conexiones mediante soldadura con solvente utilizando imprimación y cemento solvente diseñado específicamente para tuberías y accesorios de CPVC Cédula 80. Consulte el Manual de Uponor ChlorFIT o la Hoja de instrucciones de soldadura con solvente de Uponor ChlorFIT para obtener detalles completos.	Agua doméstica Tuberías hidráulicas

Footnotes	Contact information
-	<p>Uponor Inc. 5925 148th Street West Apple Valley, MN 55124 T 800.321.4739 F 952.891.2008</p> <p>Uponor Ltd. 6510 Kennedy Road Mississauga, ON L5T 2X4 T 888.594.7726 F 800.638.9517</p>