

Accesorios ChlorFIT T recta

Project Information

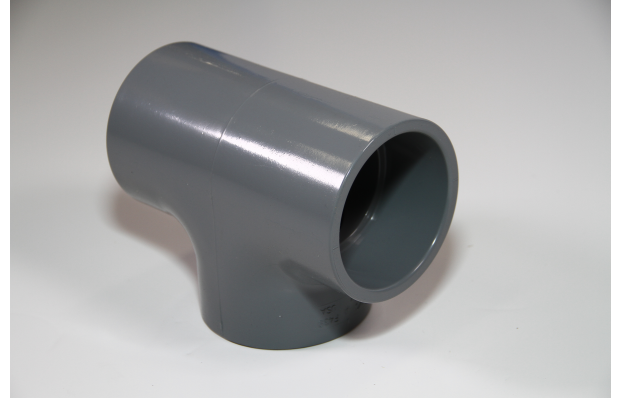
| | |
|--------------------------------|-----------------|
| Job name: | Location: |
| Engineer: | Fecha de envío: |
| Contractor: | Presentada por: |
| Manufacturer's representative: | Approved by: |

Technical data

Material CPVC

Product information and application use

Utilice las camisas de CPVC Corzan® ChlorFIT® Schedule 80 de Uponor en sistemas de agua potable fría y caliente, así como en aplicaciones de calefacción y refrigeración hidráulicas.



| Part name | Part no. | A [inch] | B [inch] | C [inch] | D [inch] | E [inch] | F [inch] | G [inch] | H [inch] | I [inch] | J [inch] |
|----------------------------|----------|----------|----------|----------|----------|----------|----------|----------|----------|----------|----------|
| 1/2" CPVC 80 Tee (SxSxS) | 9801005 | 0.802 | 0.58 | 0.58 | 0.802 | 2.764 | 0.42 | 0.962 | 1.962 | 0.58 | 1.16 |
| 3/4" CPVC 80 Tee (SxSxS) | 9801007 | 0.875 | 0.695 | 0.695 | 0.875 | 3.14 | 0.525 | 1.045 | 2.265 | 0.695 | 1.39 |
| 1" CPVC 80 Tee (SxSxS) | 9801010 | 0.965 | 0.855 | 0.855 | 0.965 | 3.64 | 0.657 | 1.163 | 2.675 | 0.855 | 1.71 |
| 1-1/4" CPVC 80 Tee (SxSxS) | 9801012 | 1.12 | 1.04 | 1.04 | 1.12 | 4.32 | 0.83 | 1.33 | 3.2 | 1.04 | 2.08 |
| 1-1/2" CPVC 80 Tee (SxSxS) | 9801015 | 1.243 | 1.167 | 1.167 | 1.243 | 4.82 | 0.95 | 1.46 | 3.578 | 1.167 | 2.335 |
| 2" CPVC 80 Tee (SxSxS) | 9801020 | 1.352 | 1.437 | 1.437 | 1.352 | 5.58 | 1.187 | 1.602 | 4.228 | 1.437 | 2.875 |
| 2-1/2" CPVC 80 Tee (SxSxS) | 9801025 | 1.54 | 1.75 | 1.75 | 1.54 | 6.58 | 1.437 | 1.852 | 5.04 | 1.75 | 3.5 |
| 3" CPVC 80 Tee (SxSxS) | 9801030 | 1.625 | 2.075 | 2.075 | 1.625 | 7.4 | 1.75 | 1.95 | 5.775 | 2.075 | 4.15 |
| 4" CPVC 80 Tee (SxSxS) | 9801040 | 1.965 | 2.615 | 2.615 | 1.965 | 9.16 | 2.25 | 2.33 | 7.195 | 2.615 | 5.23 |
| 6" CPVC 80 Tee (SxSxS) | 9801060 | 2.78 | 3.78 | 3.78 | 2.78 | 13.12 | 3.313 | 3.248 | 10.34 | 3.78 | 7.56 |
| 8" CPVC 80 Tee (SxSxS) | 9801080 | 3.79 | 4.85 | 4.85 | 3.79 | 17.28 | 4.313 | 4.328 | 13.49 | 4.85 | 9.7 |

| Part name | Part no. | K [inch] | L [inch] | M [inch] | End Typ e 1 | End Typ e 2 | End Typ e 3 | Operating Temperature 1 [°F] | Operating Temperature 2 [°F] | Weight per UOM [lbs/UOM] |
|----------------------------|----------|----------|----------|----------|---------------|---------------|---------------|----------------------------------|-----------------------------------|--------------------------|
| 1/2" CPVC 80 Tee (SxSxS) | 9801005 | 0.882 | 0.882 | 0.882 | Socket 1/2" | Socket 1/2" | Socket 1/2" | 73 °F (23 °C) at 850 psi (23 °C) | 180 °F (82 °C) at 210 psi (82 °C) | 0.16 |
| 3/4" CPVC 80 Tee (SxSxS) | 9801007 | 1.008 | 1.008 | 1.008 | Socket 3/4" | Socket 3/4" | Socket 3/4" | 73 °F (23 °C) at 690 psi (23 °C) | 180 °F (82 °C) at 170 psi (82 °C) | 0.18 |
| 1" CPVC 80 Tee (SxSxS) | 9801010 | 1.133 | 1.133 | 1.133 | Socket 1" | Socket 1" | Socket 1" | 73 °F (23 °C) at 630 psi (23 °C) | 180 °F (82 °C) at 155 psi (82 °C) | 0.33 |
| 1-1/4" CPVC 80 Tee (SxSxS) | 9801012 | 1.258 | 1.258 | 1.258 | Socket 1-1/4" | Socket 1-1/4" | Socket 1-1/4" | 73 °F (23 °C) at 520 psi (23 °C) | 180 °F (82 °C) at 130 psi (82 °C) | 0.47 |
| 1-1/2" CPVC 80 Tee (SxSxS) | 9801015 | 1.383 | 1.383 | 1.383 | Socket 1-1/2" | Socket 1-1/2" | Socket 1-1/2" | 73 °F (23 °C) at 470 psi (23 °C) | 180 °F (82 °C) at 115 psi (82 °C) | 0.68 |
| 2" CPVC 80 Tee (SxSxS) | 9801020 | 1.509 | 1.509 | 1.509 | Socket 2" | Socket 2" | Socket 2" | 73 °F (23 °C) at 400 psi (23 °C) | 180 °F (82 °C) at 100 psi (82 °C) | 0.97 |
| 2-1/2" CPVC 80 Tee (SxSxS) | 9801025 | 1.79 | 1.79 | 1.79 | Socket 2-1/2" | Socket 2-1/2" | Socket 2-1/2" | 73 °F (23 °C) at 420 psi (23 °C) | 180 °F (82 °C) at 105 psi (82 °C) | 1.76 |

| | | | | | | | | | | |
|------------------------|---------|-------|-------|-------|-----------|-----------|-----------|----------------------------------|----------------------------------|-------|
| 3" CPVC 80 Tee (SxSxS) | 9801030 | 1.89 | 1.89 | 1.89 | Socket 3" | Socket 3" | Socket 3" | 73 °F (23 °C) at 370 psi (23 °C) | 180 °F (82 °C) at 90 psi (82 °C) | 2.56 |
| 4" CPVC 80 Tee (SxSxS) | 9801040 | 2.27 | 2.27 | 2.27 | Socket 4" | Socket 4" | Socket 4" | 73 °F (23 °C) at 320 psi (23 °C) | 180 °F (82 °C) at 80 psi (82 °C) | 4.17 |
| 6" CPVC 80 Tee (SxSxS) | 9801060 | 3.02 | 3.02 | 3.02 | Socket 6" | Socket 6" | Socket 6" | 73 °F (23 °C) at 280 psi (23 °C) | 180 °F (82 °C) at 70 psi (82 °C) | 12.02 |
| 8" CPVC 80 Tee (SxSxS) | 9801080 | 4.094 | 4.094 | 4.094 | Socket 8" | Socket 8" | Socket 8" | 73 °F (23 °C) at 250 psi (23 °C) | 180 °F (82 °C) at 60 psi (82 °C) | 21.49 |

| Part name | Part no. | Codes | Standards | Listings |
|-----------------------------|----------|------------------------------|---------------------------------------|----------------------------|
| Accesorios ChlorFIT T recta | All | UPC IBC IRC IPC UMC NSPC IMC | ASTM F439 NSF/ANSI/CAN 61 NSF/ANSI 14 | ULC NSFpw-G IAPMO U.P.Code |

In addition, the following parts have additional codes, standards, or listings:

| | | | | |
|----------------------------|---------|--|--|------------|
| 1/2" CPVC 80 Tee (SxSxS) | 9801005 | | | ICC-ES-PMG |
| 3/4" CPVC 80 Tee (SxSxS) | 9801007 | | | ICC-ES-PMG |
| 1" CPVC 80 Tee (SxSxS) | 9801010 | | | ICC-ES-PMG |
| 1-1/4" CPVC 80 Tee (SxSxS) | 9801012 | | | ICC-ES-PMG |
| 1-1/2" CPVC 80 Tee (SxSxS) | 9801015 | | | ICC-ES-PMG |
| 2" CPVC 80 Tee (SxSxS) | 9801020 | | | ICC-ES-PMG |
| 2-1/2" CPVC 80 Tee (SxSxS) | 9801025 | | | ICC-ES-PMG |
| 3" CPVC 80 Tee (SxSxS) | 9801030 | | | ICC-ES-PMG |
| 4" CPVC 80 Tee (SxSxS) | 9801040 | | | ICC-ES-PMG |
| 6" CPVC 80 Tee (SxSxS) | 9801060 | | | ICC-ES-PMG |

| Installation | Related applications |
|--|--|
| Realice las conexiones mediante soldadura con solvente utilizando imprimación y cemento solvente diseñado específicamente para tuberías y accesorios de CPVC Cédula 80. Consulte el Manual de Uponor ChlorFIT o la Hoja de instrucciones de soldadura con solvente de Uponor ChlorFIT para obtener detalles completos. | Agua doméstica Tuberías hidráulicas |

| Footnotes | Contact information |
|-----------|---|
| - | <p>Uponor Inc. 5925 148th Street West Apple Valley, MN 55124 T 800.321.4739 F 952.891.2008</p> <p>Uponor Ltd. 6510 Kennedy Road Mississauga, ON L5T 2X4 T 888.594.7726 F 800.638.9517</p> |