

Colectores con válvula sin plomo (LF) de cobre (tipo L) ProPEX

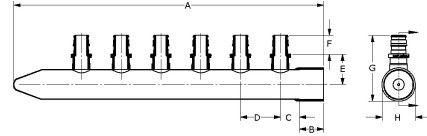


Project Information

Job name:	Location:
Engineer:	Fecha de envío:
Contractor:	Presentada por:
Manufacturer's representative:	Approved by:

Technical data

Material	Copper
Manifold size	1 inch
End type 1	ProPEX 1/2"
Temp/pressure ratings	73 °F (23 °C) at 160 psi (11 bar) 180 °F (82 °C) at 100 psi (6.9 bar) 200 °F (93 °C) at 80 psi (5.5 bar) 210 °F (99 °C) at 149 psi (10.3 bar)
Max. fluid flow rate	21 gpm
Prop 65 label required?	Yes



Product Information and application use

Uponor's 1" Copper Manifold with Lead-free Brass 1/2" ProPEX® Ball Valve provides simple and easy isolation of individual loops. Sections can sweat together to extend the number of outlets using a standard 1" copper coupling. Both 1" ends are copper pipe size and require a copper end cap, coupling or transition fitting to make the proper system connection. Do not exceed accepted flow rates for 1" nominal copper.

This product is made to order, please contact [customer service](#) for lead time.

Note: Temperature and pressure ratings stated are hydrostatic ratings. For domestic hot-water (DHW) and DHW recirculation installations, operating conditions should not exceed 140°F (60°C) at 80 psi (5.5 bar) in accordance with ASTM F2023. For additional information regarding application-specific temperature and pressure ratings, refer to the Uponor PEX Piping Systems Design and Installation Manual.

Part name	Part no.	A [inch]	B [inch]	C [inch]	D [inch]	E [inch]	F [inch]	G [inch]	H [inch]	Weight per UOM [lbs/UOM]
1" Copper Manifold with LF Brass 1/2" ProPEX Ball Valve, 4 outlets	LF2500400	7.5	0	1.5	1.5	2.698	0.709	3.97	1.653	1.65
1" Copper Manifold with LF Brass 1/2" ProPEX Ball Valve, 6 outlets	LF2500600	10.5	0	1.5	1.5	2.698	0.709	3.97	1.653	2.6
1" Copper Manifold with LF Brass 1/2" ProPEX Ball Valve, 8 outlets	LF2500800	13.5	0	1.5	1.5	2.698	0.709	3.97	1.653	3.4
1" Copper Manifold with LF Brass 1/2" ProPEX Ball Valve, 10 outlets	LF2501000	16.5	0	1.5	1.5	2.698	0.709	3.97	1.653	4.2
1" Copper Manifold with LF Brass 1/2" ProPEX Ball Valve, 12 outlets	LF2501200	19.5	0	1.5	1.5	2.698	0.709	3.97	1.653	4.85

Part name	Part no.	Codes	Standards	Listings
Colectores con válvula sin plomo (LF) de cobre (tipo L) ProPEX	All	UPC IBC IRC IPC NPC of Canada UMC NSPC IMC	ASTM F877 ASTM F1960 CSA B137.5	IAPMO-ES ICC-ES-PMG cNSFus-pw-G U.P.Code
In addition, the following parts have additional codes, standards, or listings:				
1" Copper Manifold with LF Brass 1/2" ProPEX Ball Valve, 4 outlets	LF2500400		NSF/ANSI/CAN 372 NSF/ANSI/CAN 61 NSF/ANSI 14	
1" Copper Manifold with LF Brass 1/2" ProPEX Ball Valve, 6 outlets	LF2500600		NSF/ANSI/CAN 372 NSF/ANSI/CAN 61 NSF/ANSI 14	
1" Copper Manifold with LF Brass 1/2" ProPEX Ball Valve, 8 outlets	LF2500800		NSF/ANSI/CAN 372 NSF/ANSI/CAN 61 NSF/ANSI 14	
1" Copper Manifold with LF Brass 1/2" ProPEX Ball Valve, 10 outlets	LF2501000		NSF/ANSI/CAN 372 NSF/ANSI/CAN 61 NSF/ANSI 14	
1" Copper Manifold with LF Brass 1/2" ProPEX Ball Valve, 12 outlets	LF2501200		NSF-372 NSF-61 NSF-14	

Installation

The installer can use any product designed to mount 1" copper pipe as a mounting bracket. Any bend within 6 inches of the ProPEX connection to the manifold requires the use of a Tube Talon (F7050750) or Bend Support (A5110500 and A5150500). Refer to the AquaPEX® Professional Plumbing Installation Guide for additional information.

Related applications

PEX-a Plumbing Systems

Notes

Flow at 4 fps: 10.2 gpm
Flow at 5 fps: 12.8 gpm
Flow at 8 fps: 20.5 gpm

Footnotes

Contact information

Uponor Inc.
5925 148th Street West
Apple Valley, MN 55124
T 800.321.4739
F 952.891.2008

Uponor Ltd.
6510 Kennedy Road
Mississauga, ON L5T 2X4
T 888.594.7726
F 800.638.9517