

# Tapas de PP-RCT de Uponor (fusión a tope)

## Project Information

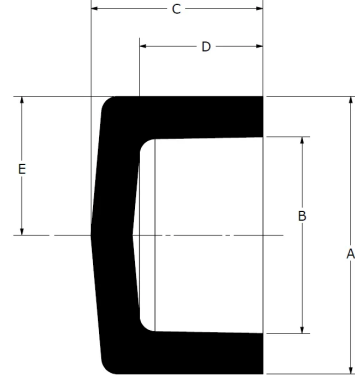
Job name:	Location:
Engineer:	Fecha de envío:
Contractor:	Presentada por:
Manufacturer's representative:	Approved by:

## Technical data

Material PP-RCT

## Product information and application use

Utilice las tapas de extremo de fusión a tope PP-RCT de Uponor con tubería mecánica PP-RCT de Uponor para transportar fluido para calefacción y refrigeración hidrónicas o aplicaciones industriales y con tubería potable PP-RCT de Uponor para transportar agua para aplicaciones de plomería potable.



Part name	Part no.	A [Inch]	B [Inch]	C [Inch]	D [Inch]	E [Inch]	End Type 1	Operating Temperature 1 [°F]	Operating Temperature 2 [°F]	Operating Temperature 3 [°F]	Weight per UOM [lbs/UOM]
Uponor PP-RCT End Cap, 10", SDR 11	PR11435100	9.843	8.055	4.484	3.591	4.921	Butt 10"	73 °F (23 °C) at 215 psi (23 °C)	140 °F (60 °C) at 120 psi (60 °C)	180 °F (82 °C) at 80 psi (82 °C)	5.56
Uponor PP-RCT End Cap, 10", SDR 17.6	PR17435100	9.874	8.693	4.48	2.913	4.937	Butt 10"	73 °F (23 °C) at 130 psi (23 °C)	140 °F (60 °C) at 70 psi (60 °C)	180 °F (82 °C) at 50 psi (82 °C)	4.68
Uponor PP-RCT End Cap, 10", SDR 9	PR9435100	9.843	7.646	4.456	3.357	4.921	Butt 10"	73 °F (23 °C) at 265 psi (23 °C)	140 °F (60 °C) at 150 psi (60 °C)	180 °F (82 °C) at 100 psi (82 °C)	6.05
Uponor PP-RCT End Cap, 12", SDR 11	PR11435120	12.402	10.15	4.383	3.257	6.201	Butt 12"	73 °F (23 °C) at 215 psi (23 °C)	140 °F (60 °C) at 120 psi (60 °C)	180 °F (82 °C) at 80 psi (82 °C)	9.67
Uponor PP-RCT End Cap, 12", SDR 17.6	PR17435120	12.433	10.969	4.679	2.652	6.217	Butt 12"	73 °F (23 °C) at 130 psi (23 °C)	140 °F (60 °C) at 70 psi (60 °C)	180 °F (82 °C) at 50 psi (82 °C)	8.37
Uponor PP-RCT End Cap, 12", SDR 9	PR9435120	12.402	9.63	4.673	3.287	6.201	Butt 12"	73 °F (23 °C) at 265 psi (23 °C)	140 °F (60 °C) at 150 psi (60 °C)	180 °F (82 °C) at 100 psi (82 °C)	10.4
Uponor PP-RCT End Cap, 6", SDR 11	PR1143560	6.299	5.087	2.92	1.654	3.15	Butt 6"	73 °F (23 °C) at 215 psi (23 °C)	140 °F (60 °C) at 120 psi (60 °C)	180 °F (82 °C) at 80 psi (82 °C)	1.58
Uponor PP-RCT End Cap, 6", SDR 17.6	PR1743560	6.299	5.512	3.002	1.689	3.15	Butt 6"	73 °F (23 °C) at 130 psi (23 °C)	140 °F (60 °C) at 70 psi (60 °C)	180 °F (82 °C) at 50 psi (82 °C)	1.36
Uponor PP-RCT End Cap, 6", SDR 9	PR9435600	6.299	4.89	2.92	1.689	3.15	Butt 6"	73 °F (23 °C) at 265 psi (23 °C)	140 °F (60 °C) at 150 psi (60 °C)	180 °F (82 °C) at 100 psi (82 °C)	1.67
Uponor PP-RCT End Cap, 8", SDR 11	PR1143580	7.874	6.441	4.339	3.622	3.937	Butt 8"	73 °F (23 °C) at 215 psi (23 °C)	140 °F (60 °C) at 120 psi (60 °C)	180 °F (82 °C) at 80 psi (82 °C)	3.3
Uponor PP-RCT End Cap, 8", SDR 17.6	PR1743580	7.898	6.953	4.354	3.107	3.949	Butt 8"	73 °F (23 °C) at 130 psi (23 °C)	140 °F (60 °C) at 70 psi (60 °C)	180 °F (82 °C) at 50 psi (82 °C)	2.7
Uponor PP-RCT End Cap, 8", SDR 9	PR943580	7.874	6.11	4.357	3.475	3.937	Butt 8"	73 °F (23 °C) at 265 psi (23 °C)	140 °F (60 °C) at 150 psi (60 °C)	180 °F (82 °C) at 100 psi (82 °C)	3.65

Part name	Part no.	Codes	Standards	Listings
Tapas de PP-RCT de Uponor (fusión a tope)	All	CMC IMC UMC	ASTM E84 NSF/ANSI 14 ASTM F2389 CSA B137.11	ICC-ES-PMG 1106 IAPMO-R&T 8358 QAI P321-5 IAPMO K-12775
In addition, the following parts have additional codes, standards, or listings:				
Uponor PP-RCT End Cap, 10", SDR 11	PR11435100		NSF/ANSI/CAN 61	
Uponor PP-RCT End Cap, 10", SDR 9	PR9435100		NSF/ANSI/CAN 61	
Uponor PP-RCT End Cap, 12", SDR 11	PR11435120		NSF/ANSI/CAN 61	
Uponor PP-RCT End Cap, 12", SDR 9	PR9435120		NSF/ANSI/CAN 61	
Uponor PP-RCT End Cap, 8", SDR 11	PR1143580		NSF/ANSI/CAN 61	
Uponor PP-RCT End Cap, 8", SDR 9	PR943580		NSF/ANSI/CAN 61	

Installation	Related applications
Utilice métodos de conexión de fusión a tope aprobados. Consulte el manual de PP-RCT de Uponor para obtener todos los detalles.	Sistemas hidrónicos de calefacción y refrigeración Industrial Sistemas de agua domésticos

Footnotes	Contact information
-	<p>Uponor Inc. 5925 148th Street West Apple Valley, MN 55124 T 800.321.4739 F 952.891.2008</p> <p>Uponor Ltd. 6510 Kennedy Road Mississauga, ON L5T 2X4 T 888.594.7726 F 800.638.9517</p>