

# Adaptadores de accesorios con ranuras de bronce sin plomo (LF) ProPEX



## Project Information

Job name:	Location:
Engineer:	Fecha de envío:
Contractor:	Presentada por:
Manufacturer's representative:	Approved by:

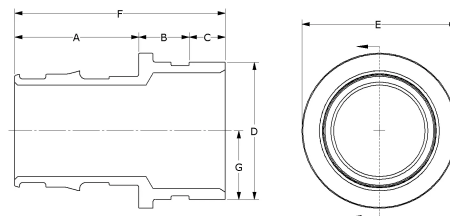
## Technical data

Material	LF Brass
Temp/pressure ratings	73 °F (23 °C) at 160 psi (11 bar) 180 °F (82 °C) at 100 psi (6.9 bar) 200 °F (93 °C) at 80 psi (5.5 bar)
Prop 65 label required?	Yes

## Product information and application use

ProPEX® lead-free (LF) brass copper tube size (CTS) roll-groove fitting adapters provide a direct connection to roll-groove connections designed to meet CSA B242-05. These fittings are CTS size on the roll-groove connection side.

Note: Temperature and pressure ratings stated are hydrostatic ratings. For domestic hot-water (DHW) and DHW recirculation installations, operating conditions should not exceed 140°F (60°C) at 80 psi (5.5 bar) in accordance with ASTM F2023. For additional information regarding application-specific temperature and pressure ratings, refer to the Uponor PEX Piping Systems Design and Installation Manual.



Part name	Part no.	A [inch]	B [inch]	C [inch]	D [inch]	E [inch]	F [inch]	G [inch]	Cv	Equivalent length through [ft]	End Type 1
ProPEX LF Groove Fitting Adapter, 2" PEX LF Brass x 2" CTS Groove	LFV2962020	2.147	0.89	0.61	2.124	2.68	3.647	1.062	141.4	0.99	ProPEX 2"
ProPEX LF Groove Fitting Adapter, 2 1/2" PEX LF Brass x 2 1/2" CTS Groove	LFV2962525	2.83	0.89	0.61	2.624	3.36	4.33	1.312	222.7	1.52	ProPEX 2-1/2"
ProPEX LF Groove Fitting Adapter, 3" PEX LF Brass x 3" CTS Groove	LFV2963030	3.38	0.89	0.61	3.125	3.79	4.88	1.563	338.3	1.55	ProPEX 3"
ProPEX LF Groove Fitting Adapter, 2" PEX LF Brass x 2" IPS Groove	LFV2972020	2.147	0.875	0.625	2.375	2.68	3.647	1.187	114.5	2.34	ProPEX 2"
ProPEX LF Groove Fitting Adapter, 2 1/2" PEX LF Brass x 2 1/2" IPS Groove	LFV2972525	2.83	0.875	0.625	2.875	3.36	4.33	1.437	202	7.63	ProPEX 2-1/2"
ProPEX LF Groove Fitting Adapter, 2 1/2" PEX LF Brass x 3" IPS Groove	LFV2972530	2.83	0.875	0.625	3.5	3.501	4.33	1.75	199.8	2.39	ProPEX 2-1/2"
ProPEX LF Groove Fitting Adapter, 3" PEX LF Brass x 3" IPS Groove	LFV2973030	3.38	0.875	0.625	3.5	3.79	4.88	1.75	282.4	2.77	ProPEX 3"

Part name	Part no.	End Type 2	Weight per UOM [lbs/UOM]
ProPEX LF Groove Fitting Adapter, 2" PEX LF Brass x 2" CTS Groove	LFV2962020	CTS Groove 2"	1.12
ProPEX LF Groove Fitting Adapter, 2 1/2" PEX LF Brass x 2 1/2" CTS Groove	LFV2962525	CTS Groove 2-1/2"	1.86
ProPEX LF Groove Fitting Adapter, 3" PEX LF Brass x 3" CTS Groove	LFV2963030	CTS Groove 3"	2.66
ProPEX LF Groove Fitting Adapter, 2" PEX LF Brass x 2" IPS Groove	LFV2972020	IPS Groove 2"	1.2
ProPEX LF Groove Fitting Adapter, 2 1/2" PEX LF Brass x 2 1/2" IPS Groove	LFV2972525	IPS Groove 2-1/2"	1.92
ProPEX LF Groove Fitting Adapter, 2 1/2" PEX LF Brass x 3" IPS Groove	LFV2972530	IPS Groove 3"	2.18
ProPEX LF Groove Fitting Adapter, 3" PEX LF Brass x 3" IPS Groove	LFV2973030	IPS Groove 3"	2.76

Part name	Part no.	Codes	Standards	Listings
Adaptadores de accesorios con ranuras de bronce sin plomo (LF) ProPEX	All	UPC IBC IRC IPC NPC of Canada UMC NSPC IMC	ASTM F877 NSF/ANSI/CAN 372 ASTM F1960 CSA B137.5 NSF/ANSI/CAN 61 NSF/ANSI 14	IAPMO-ES ICC-ES-PMG cNSFus-pw-G U.P.Code

In addition, the following parts have additional codes, standards, or listings:

ProPEX LF Groove Fitting Adapter, 2 1/2" PEX LF Brass x 2 1/2" CTS Groove	LFV2962525			
ProPEX LF Groove Fitting Adapter, 3" PEX LF Brass x 3" CTS Groove	LFV2963030			
ProPEX LF Groove Fitting Adapter, 2 1/2" PEX LF Brass x 3" IPS Groove	LFV2972530			

Installation	Related applications
ProPEX tool and ProPEX rings (sold separately) are required for connecting the PEX tubing. For more information, refer to the Uponor AquaPEX® professional plumbing installation guide. For making roll-groove connections, follow the roll-groove fitting manufacturer's installation instructions	<ul style="list-style-type: none"> <li>PEX-a Plumbing Systems</li> <li>Hydronic Radiant Heating and Cooling Systems</li> <li>Permafrost Protection Systems</li> <li>Turf Conditioning Systems</li> </ul>

Notes
<p>Cv = 141.4 when connecting Pex to Pex Cv Outlet 2 = 86.1 when transitioning from Metal to Pex</p> <p>Cv = 222.7 when connecting Pex to Pex Cv Outlet 2 = 138.7 when transitioning Metal to Pex</p> <p>Cv = 338.3 when connecting Pex to Pex Cv Outlet 2 = 192.3 when transitioning Metal to Pex</p> <p>Cv = 114.5 when connecting Pex to Pex Cv Outlet 2 = 79.7 when transitioning Metal to Pex</p> <p>Cv = 202 when connecting Pex to Pex Cv Outlet 2 = 130.2 when transitioning Metal to Pex</p> <p>Cv = 199.8 when connecting Pex to Pex Cv Outlet 2 = 114.9 when transitioning Metal to Pex</p> <p>Cv = 282.4 when connecting Pex to Pex Cv Outlet 2 = 177.4 when transitioning from Metal to Pex</p>

Footnotes	Contact information
-	<p>Uponor Inc. 5925 148th Street West Apple Valley, MN 55124 T 800.321.4739 F 952.891.2008</p> <p>Uponor Ltd. 6510 Kennedy Road Mississauga, ON L5T 2X4 T 888.594.7726 F 800.638.9517</p>