

Conectores en T reductores TotalFit

Project information

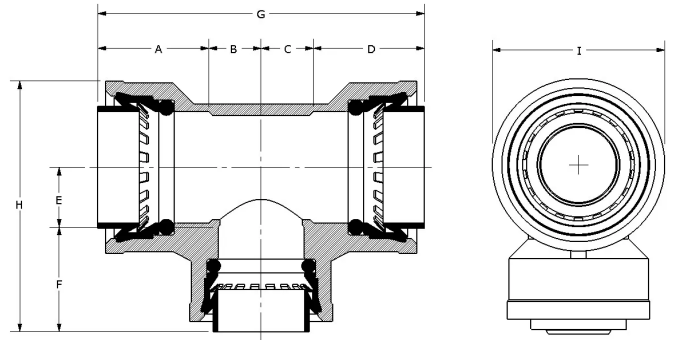
| | |
|--------------------------------|-----------------|
| Job name: | Location: |
| Engineer: | Fecha de envío: |
| Contractor: | Presentada por: |
| Manufacturer's representative: | Approved by: |

Technical data

| | |
|-------------------------|--|
| Material | Engineered Polymer |
| Temp/pressure ratings | 73 °F (23 °C) at 160 psi (11 bar) 180 °F (82 °C) at 100 psi (6.9 bar) 200 °F (93 °C) at 80 psi (5.5 bar) |
| Prop 65 label required? | No |

Product information and application use

TotalFit™ is the professional-grade engineered polymer (EP) push-to-connect solution that provides greater value for residential projects with the same versatility and speed as brass push-to-connect fittings for PEX, PE-RT, CPVC, and copper piping systems.



| Part name | Part no. | A [inch] | B [inch] | C [inch] | D [inch] | E [inch] | F [inch] | G [inch] | H [inch] | I [inch] | End Type 1 |
|--|-----------|----------|----------|----------|----------|----------|----------|----------|----------|----------|---------------|
| TotalFit Reducing Tee, 1" x 1" x 1/2 | TF4751150 | 1.134 | 0.396 | 0.396 | 1.134 | 0.61 | 0.913 | 3.059 | 2.404 | 1.76 | TotalFit 1" |
| TotalFit Reducing Tee, 1" x 1" x 3/4 | TF4751175 | 1.134 | 0.533 | 0.533 | 1.134 | 0.61 | 1.067 | 3.335 | 2.557 | 1.76 | TotalFit 1" |
| TotalFit Reducing Tee, 3/4" x 3/4" x 1/2 | TF4757550 | 1.067 | 0.392 | 0.392 | 1.067 | 0.51 | 0.913 | 2.917 | 2.152 | 1.457 | TotalFit 3/4" |
| TotalFit Reducing Tee, 3/4" x 1/2" x 1/2 | TF4757555 | 1.067 | 0.427 | 0.427 | 0.913 | 0.427 | 0.913 | 2.835 | 2.069 | 1.457 | TotalFit 3/4" |

| Part name | Part no. | End Type 2 | End Type 3 | Weight per UOM [lbs/UOM] |
|--|-----------|---------------|---------------|--------------------------|
| TotalFit Reducing Tee, 1" x 1" x 1/2 | TF4751150 | TotalFit 1" | TotalFit 1/2" | 0.14 |
| TotalFit Reducing Tee, 1" x 1" x 3/4 | TF4751175 | TotalFit 1" | TotalFit 3/4" | 0.16 |
| TotalFit Reducing Tee, 3/4" x 3/4" x 1/2 | TF4757550 | TotalFit 3/4" | TotalFit 1/2" | 0.1 |
| TotalFit Reducing Tee, 3/4" x 1/2" x 1/2 | TF4757555 | TotalFit 1/2" | TotalFit 1/2" | 0.09 |

| Part name | Part no. | Codes | Standards | Listings |
|-------------------------------------|----------|---|--|---|
| Conectores en T reductores TotalFit | All | UPC IRC IPC NPC of Canada UMC CMC CPC IMC | ASTM F877 NSF/ANSI/CAN 372 NSF/ANSI/CAN 61 NSF/ANSI 14 ASSE 1061 | IAPMO K-13573 IAPMO K-13571 IAPMO K-13572 |

In addition, the following parts have additional codes, standards, or listings:

| | |
|--------------------------------------|-----------|
| TotalFit Reducing Tee, 1" x 1" x 3/4 | TF4751175 |
|--------------------------------------|-----------|

Installation

Install on PEX, PE-RT, CPVC, and copper piping systems. Use deburr and depth tool to remove excess material or burrs and mark the appropriate depth on pipe. If using flexible PEX or PE-RT, install the insert inside the pipe first before making the connection. Refer to the Uponor TotalFit Instruction Sheet for additional information.

Related applications

Plumbing
Hydronic Heating & Cooling

Footnotes

Contact information

Uponor Inc.
5925 148th Street West
Apple Valley, MN 55124
T 800.321.4739
F 952.891.2008

Uponor Ltd.
6510 Kennedy Road
Mississauga, ON L5T 2X4
T 888.594.7726
F 800.638.9517