

# Abrazaderas de transición de PP-RCT de Uponor (fusión de salida)



## Project Information

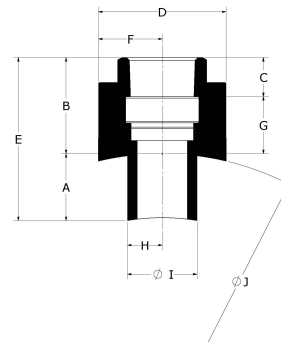
|                                |                 |
|--------------------------------|-----------------|
| Job name:                      | Location:       |
| Engineer:                      | Fecha de envío: |
| Contractor:                    | Presentada por: |
| Manufacturer's representative: | Approved by:    |

## Technical data

Material PP-RCT  
 Prop 65 label required? Yes

## Product information and application use

Use Uponor Lead-Free (LF) Female NPT Transition Saddles for outlet-fusion connections to Uponor PP-RCT Mechanical Pipe to convey fluid for hydronic heating and cooling or industrial applications and for outlet-fusion connections to Uponor PP-RCT Potable Pipe to convey water for potable plumbing applications.



| Part name   | Part no.   | A [inch] | B [inch] | C [inch] | D [inch] | E [inch] | F [inch] | G [inch] | H [inch] | I [inch] | J [inch] |
|---|------------|----------|----------|----------|----------|----------|----------|----------|----------|----------|----------|
| Uponor PP-RCT Transition Saddle, 10" x 1", Female NPT, for Outlet Fusion      | PR47910010 | 1.151    | 1.496    | 0.661    | 2.362    | 2.647    | 1.181    | 0.835    | 0.63     | 1.26     | 9.843    |
| Uponor PP-RCT Transition Saddle, 10" x 1/2", Female NPT, for Outlet Fusion    | PR47910050 | 1.13     | 1.335    | 0.535    | 1.614    | 2.465    | 0.807    | 0.799    | 0.494    | 0.988    | 9.843    |
| Uponor PP-RCT Transition Saddle, 10" x 3/4", Female NPT, for Outlet Fusion    | PR47910075 | 1.13     | 1.398    | 0.553    | 1.811    | 2.528    | 0.906    | 0.844    | 0.494    | 0.988    | 9.851    |
| Uponor PP-RCT Transition Saddle, 1 1/2" x 1/2", Female NPT, for Outlet Fusion | PR4791550  | 0.4      | 1.209    | 0.535    | 1.495    | 1.609    | 0.748    | 0.673    | 0.492    | 0.984    | 1.969    |
| Uponor PP-RCT Transition Saddle, 1 1/2" x 3/4", Female NPT, for Outlet Fusion | PR4791575  | 0.4      | 1.366    | 0.553    | 1.705    | 1.766    | 0.853    | 0.813    | 0.492    | 0.984    | 1.969    |
| Uponor PP-RCT Transition Saddle, 2" x 1/2", Female NPT, for Outlet Fusion     | PR4792050  | 0.415    | 1.209    | 0.535    | 1.495    | 1.624    | 0.748    | 0.673    | 0.492    | 0.984    | 2.48     |
| Uponor PP-RCT Transition Saddle, 2" x 3/4", Female NPT, for Outlet Fusion     | PR4792075  | 0.415    | 1.366    | 0.553    | 1.705    | 1.781    | 0.853    | 0.813    | 0.492    | 0.984    | 2.48     |
| Uponor PP-RCT Transition Saddle, 2 1/2" x 1", Female NPT, for Outlet Fusion   | PR4792510  | 0.519    | 1.496    | 0.661    | 2.36     | 2.015    | 1.18     | 0.835    | 0.63     | 1.26     | 2.953    |
| Uponor PP-RCT Transition Saddle, 2 1/2" x 1/2", Female NPT, for Outlet Fusion | PR4792550  | 0.442    | 1.209    | 0.535    | 1.495    | 1.65     | 0.748    | 0.673    | 0.492    | 0.984    | 2.953    |
| Uponor PP-RCT Transition Saddle, 2 1/2" x 3/4", Female NPT, for Outlet Fusion | PR4792575  | 0.442    | 1.366    | 0.553    | 1.705    | 1.808    | 0.853    | 0.813    | 0.492    | 0.984    | 2.953    |
| Uponor PP-RCT Transition Saddle, 3" x 1", Female NPT, for Outlet Fusion       | PR4793010  | 0.551    | 1.496    | 0.661    | 2.36     | 2.047    | 1.18     | 0.835    | 0.63     | 1.26     | 3.543    |
| Uponor PP-RCT Transition Saddle, 3" x 1/2", Female NPT, for Outlet Fusion     | PR4793050  | 0.489    | 1.209    | 0.535    | 1.495    | 1.697    | 0.748    | 0.673    | 0.492    | 0.984    | 3.543    |
| Uponor PP-RCT Transition Saddle, 3" x 3/4", Female NPT, for Outlet Fusion     | PR4793075  | 0.489    | 1.366    | 0.553    | 1.705    | 1.855    | 0.853    | 0.813    | 0.492    | 0.984    | 3.543    |
| Uponor PP-RCT Transition Saddle, 4" x 1", Female NPT, for Outlet Fusion       | PR4794010  | 0.658    | 1.496    | 0.661    | 2.36     | 2.154    | 1.18     | 0.835    | 0.63     | 1.26     | 4.921    |
| Uponor PP-RCT Transition Saddle, 4" x 1/2", Female NPT, for Outlet Fusion     | PR4794050  | 0.616    | 1.209    | 0.535    | 1.495    | 1.824    | 0.748    | 0.673    | 0.492    | 0.984    | 4.921    |
| Uponor PP-RCT Transition Saddle, 4" x 3/4", Female NPT, for Outlet Fusion     | PR4794075  | 0.616    | 1.366    | 0.553    | 1.705    | 1.982    | 0.853    | 0.813    | 0.492    | 0.984    | 4.921    |
| Uponor PP-RCT Transition Saddle, 6" x 1", Female NPT, for Outlet Fusion       | PR4796010  | 0.787    | 1.496    | 0.661    | 2.36     | 2.283    | 1.18     | 0.835    | 0.63     | 1.26     | 6.303    |
| Uponor PP-RCT Transition Saddle, 6" x 1/2", Female NPT, for Outlet Fusion     | PR4796050  | 0.755    | 1.209    | 0.535    | 1.495    | 1.963    | 0.748    | 0.673    | 0.492    | 0.984    | 6.299    |
| Uponor PP-RCT Transition Saddle, 6" x 3/4", Female NPT, for Outlet Fusion     | PR4796075  | 0.755    | 1.366    | 0.553    | 1.705    | 2.121    | 0.853    | 0.813    | 0.492    | 0.984    | 6.299    |
| Uponor PP-RCT Transition Saddle, 8" x 1", Female NPT, for Outlet Fusion       | PR4798010  | 0.972    | 1.496    | 0.661    | 2.362    | 2.468    | 1.181    | 0.835    | 0.63     | 1.26     | 7.874    |

|   |           |       |       |       |       |       |       |       |       |       |       |
|---|-----------|-------|-------|-------|-------|-------|-------|-------|-------|-------|-------|
| Uponor PP-RCT Transition Saddle, 8" x 1/2", Female NPT, for Outlet Fusion | PR4798050 | 0.946 | 1.28  | 0.535 | 1.614 | 2.225 | 0.807 | 0.744 | 0.492 | 0.984 | 7.874 |
| Uponor PP-RCT Transition Saddle, 8" x 3/4", Female NPT, for Outlet Fusion | PR4798075 | 0.946 | 1.358 | 0.553 | 1.811 | 2.304 | 0.906 | 0.805 | 0.492 | 0.984 | 7.874 |

| Part name   | Part no.   | Equivalent length through [ft] | End Type 1    | End Type 2 | Operating Temperature 1 [°F] | Operating Temperature 2 [°F] | Operating Temperature 3 [°F] | Weight per UOM [lbs/UOM] |
|---|------------|--------------------------------|---------------|------------|------------------------------|------------------------------|------------------------------|--------------------------|
| Uponor PP-RCT Transition Saddle, 10" x 1", Female NPT, for Outlet Fusion      | PR47910010 | 1.7                            | Saddle 10"    | FNPT 1"    | -                            | -                            | -                            | 0.44                     |
| Uponor PP-RCT Transition Saddle, 10" x 1/2", Female NPT, for Outlet Fusion    | PR47910050 | 1.1                            | Saddle 10"    | FNPT 1/2"  | 73                           | 140                          | 180                          | 0.17                     |
| Uponor PP-RCT Transition Saddle, 10" x 3/4", Female NPT, for Outlet Fusion    | PR47910075 | 1.4                            | Saddle 10"    | FNPT 3/4"  | 73                           | 140                          | 180                          | 0.21                     |
| Uponor PP-RCT Transition Saddle, 1 1/2" x 1/2", Female NPT, for Outlet Fusion | PR4791550  | 1.1                            | Saddle 1-1/2" | FNPT 1/2"  | 73                           | 140                          | 180                          | 0.15                     |
| Uponor PP-RCT Transition Saddle, 1 1/2" x 3/4", Female NPT, for Outlet Fusion | PR4791575  | 1.4                            | Saddle 1-1/2" | FNPT 3/4"  | 73                           | 140                          | 180                          | 0.19                     |
| Uponor PP-RCT Transition Saddle, 2" x 1/2", Female NPT, for Outlet Fusion     | PR4792050  | 1.1                            | Saddle 2"     | FNPT 1/2"  | 73                           | 140                          | 180                          | 0.15                     |
| Uponor PP-RCT Transition Saddle, 2" x 3/4", Female NPT, for Outlet Fusion     | PR4792075  | 1.4                            | Saddle 2"     | FNPT 3/4"  | 73                           | 140                          | 180                          | 0.19                     |
| Uponor PP-RCT Transition Saddle, 2 1/2" x 1", Female NPT, for Outlet Fusion   | PR4792510  | 1.7                            | Saddle 2-1/2" | FNPT 1"    | 73                           | 140                          | 180                          | 0.42                     |
| Uponor PP-RCT Transition Saddle, 2 1/2" x 1/2", Female NPT, for Outlet Fusion | PR4792550  | 1.1                            | Saddle 2-1/2" | FNPT 1/2"  | 73                           | 140                          | 180                          | 0.15                     |
| Uponor PP-RCT Transition Saddle, 2 1/2" x 3/4", Female NPT, for Outlet Fusion | PR4792575  | 1.4                            | Saddle 2-1/2" | FNPT 3/4"  | 73                           | 140                          | 180                          | 0.19                     |
| Uponor PP-RCT Transition Saddle, 3" x 1", Female NPT, for Outlet Fusion       | PR4793010  | 1.7                            | Saddle 3"     | FNPT 1"    | 73                           | 140                          | 180                          | 0.43                     |
| Uponor PP-RCT Transition Saddle, 3" x 1/2", Female NPT, for Outlet Fusion     | PR4793050  | 1.1                            | Saddle 3"     | FNPT 1/2"  | 73                           | 140                          | 180                          | 0.15                     |
| Uponor PP-RCT Transition Saddle, 3" x 3/4", Female NPT, for Outlet Fusion     | PR4793075  | 1.4                            | Saddle 3"     | FNPT 3/4"  | 73                           | 140                          | 180                          | 0.19                     |
| Uponor PP-RCT Transition Saddle, 4" x 1", Female NPT, for Outlet Fusion       | PR4794010  | 1.7                            | Saddle 4"     | FNPT 1"    | 73                           | 140                          | 180                          | 0.43                     |
| Uponor PP-RCT Transition Saddle, 4" x 1/2", Female NPT, for Outlet Fusion     | PR4794050  | 1.1                            | Saddle 4"     | FNPT 1/2"  | 73                           | 140                          | 180                          | 0.15                     |
| Uponor PP-RCT Transition Saddle, 4" x 3/4", Female NPT, for Outlet Fusion     | PR4794075  | 1.4                            | Saddle 4"     | FNPT 3/4"  | 73                           | 140                          | 180                          | 0.2                      |
| Uponor PP-RCT Transition Saddle, 6" x 1", Female NPT, for Outlet Fusion       | PR4796010  | 1.7                            | Saddle 6"     | FNPT 1"    | 73                           | 140                          | 180                          | 0.42                     |
| Uponor PP-RCT Transition Saddle, 6" x 1/2", Female NPT, for Outlet Fusion     | PR4796050  | 1.1                            | Saddle 6"     | FNPT 1/2"  | 73                           | 140                          | 180                          | 0.15                     |
| Uponor PP-RCT Transition Saddle, 6" x 3/4", Female NPT, for Outlet Fusion     | PR4796075  | 1.4                            | Saddle 6"     | FNPT 3/4"  | 73                           | 140                          | 180                          | 0.2                      |
| Uponor PP-RCT Transition Saddle, 8" x 1", Female NPT, for Outlet Fusion       | PR4798010  | 1.7                            | Saddle 8"     | FNPT 1"    | 73                           | 140                          | 180                          | 0.44                     |
| Uponor PP-RCT Transition Saddle, 8" x 1/2", Female NPT, for Outlet Fusion     | PR4798050  | 1.1                            | Saddle 8"     | FNPT 1/2"  | 73                           | 140                          | 180                          | 0.16                     |
| Uponor PP-RCT Transition Saddle, 8" x 3/4", Female NPT, for Outlet Fusion     | PR4798075  | 1.4                            | Saddle 8"     | FNPT 3/4"  | 73                           | 140                          | 180                          | 0.2                      |

| Part name  | Part no. | Codes       | Standards                                   | Listings  |
|--|----------|-------------|---|---|
| Abrazaderas de transición de PP-RCT de Uponor (fusión de salida) | All      | CMC IMC UMC | ASTM E84 NSF/ANSI 14 ASTM F2389 CSA B137.11 | ICC-ES-PMG 1106 IAPMO-R&T 8358 QAI P321-5 IAPMO K-12775 |

| Installation | Related applications   |
|--------------|--|
| -            | Domestic water systems<br>Hydronic heating and cooling systems<br>Industrial |

| Footnotes | Contact information   |
|-----------|---|
| -         | <p>Uponor Inc.<br/>5925 148th Street West<br/>Apple Valley, MN 55124<br/>T 800.321.4739<br/>F 952.891.2008</p> <p>Uponor Ltd.<br/>6510 Kennedy Road<br/>Mississauga, ON L5T 2X4<br/>T 888.594.7726<br/>F 800.638.9517</p> |