

# Abrazaderas de transición de PP-RCT de Uponor (fusión de salida)



## Project Information

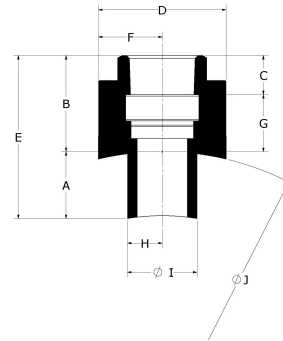
Job name:	Location:
Engineer:	Fecha de envío:
Contractor:	Presentada por:
Manufacturer's representative:	Approved by:

## Technical data

Material PP-RCT  
 Prop 65 label required? Yes

## Product information and application use

Use Uponor Lead-Free (LF) Female NPT Transition Saddles for outlet-fusion connections to Uponor PP-RCT Mechanical Pipe to convey fluid for hydronic heating and cooling or industrial applications and for outlet-fusion connections to Uponor PP-RCT Potable Pipe to convey water for potable plumbing applications.



Part name	Part no.	A [inch]	B [inch]	C [inch]	D [inch]	E [inch]	F [inch]	G [inch]	H [inch]	I [inch]	J [inch]
Uponor PP-RCT Transition Saddle, 10" x 1", Female NPT, for Outlet Fusion	PR47910010	1.151	1.496	0.661	2.362	2.647	1.181	0.835	0.63	1.26	9.843
Uponor PP-RCT Transition Saddle, 10" x 1/2", Female NPT, for Outlet Fusion	PR47910050	1.13	1.335	0.535	1.614	2.465	0.807	0.799	0.494	0.988	9.843
Uponor PP-RCT Transition Saddle, 10" x 3/4", Female NPT, for Outlet Fusion	PR47910075	1.13	1.398	0.553	1.811	2.528	0.906	0.844	0.494	0.988	9.851
Uponor PP-RCT Transition Saddle, 1 1/2" x 1/2", Female NPT, for Outlet Fusion	PR4791550	0.4	1.209	0.535	1.495	1.609	0.748	0.673	0.492	0.984	1.969
Uponor PP-RCT Transition Saddle, 1 1/2" x 3/4", Female NPT, for Outlet Fusion	PR4791575	0.4	1.366	0.553	1.705	1.766	0.853	0.813	0.492	0.984	1.969
Uponor PP-RCT Transition Saddle, 2" x 1/2", Female NPT, for Outlet Fusion	PR4792050	0.415	1.209	0.535	1.495	1.624	0.748	0.673	0.492	0.984	2.48
Uponor PP-RCT Transition Saddle, 2" x 3/4", Female NPT, for Outlet Fusion	PR4792075	0.415	1.366	0.553	1.705	1.781	0.853	0.813	0.492	0.984	2.48
Uponor PP-RCT Transition Saddle, 2 1/2" x 1", Female NPT, for Outlet Fusion	PR4792510	0.519	1.496	0.661	2.36	2.015	1.18	0.835	0.63	1.26	2.953
Uponor PP-RCT Transition Saddle, 2 1/2" x 1/2", Female NPT, for Outlet Fusion	PR4792550	0.442	1.209	0.535	1.495	1.65	0.748	0.673	0.492	0.984	2.953
Uponor PP-RCT Transition Saddle, 2 1/2" x 3/4", Female NPT, for Outlet Fusion	PR4792575	0.442	1.366	0.553	1.705	1.808	0.853	0.813	0.492	0.984	2.953
Uponor PP-RCT Transition Saddle, 3" x 1", Female NPT, for Outlet Fusion	PR4793010	0.551	1.496	0.661	2.36	2.047	1.18	0.835	0.63	1.26	3.543
Uponor PP-RCT Transition Saddle, 3" x 1/2", Female NPT, for Outlet Fusion	PR4793050	0.489	1.209	0.535	1.495	1.697	0.748	0.673	0.492	0.984	3.543
Uponor PP-RCT Transition Saddle, 3" x 3/4", Female NPT, for Outlet Fusion	PR4793075	0.489	1.366	0.553	1.705	1.855	0.853	0.813	0.492	0.984	3.543
Uponor PP-RCT Transition Saddle, 4" x 1", Female NPT, for Outlet Fusion	PR4794010	0.658	1.496	0.661	2.36	2.154	1.18	0.835	0.63	1.26	4.921
Uponor PP-RCT Transition Saddle, 4" x 1/2", Female NPT, for Outlet Fusion	PR4794050	0.616	1.209	0.535	1.495	1.824	0.748	0.673	0.492	0.984	4.921
Uponor PP-RCT Transition Saddle, 4" x 3/4", Female NPT, for Outlet Fusion	PR4794075	0.616	1.366	0.553	1.705	1.982	0.853	0.813	0.492	0.984	4.921
Uponor PP-RCT Transition Saddle, 6" x 1", Female NPT, for Outlet Fusion	PR4796010	0.787	1.496	0.661	2.36	2.283	1.18	0.835	0.63	1.26	6.303
Uponor PP-RCT Transition Saddle, 6" x 1/2", Female NPT, for Outlet Fusion	PR4796050	0.755	1.209	0.535	1.495	1.963	0.748	0.673	0.492	0.984	6.299
Uponor PP-RCT Transition Saddle, 6" x 3/4", Female NPT, for Outlet Fusion	PR4796075	0.755	1.366	0.553	1.705	2.121	0.853	0.813	0.492	0.984	6.299
Uponor PP-RCT Transition Saddle, 8" x 1", Female NPT, for Outlet Fusion	PR4798010	0.972	1.496	0.661	2.362	2.468	1.181	0.835	0.63	1.26	7.874

Uponor PP-RCT Transition Saddle, 8" x 1/2", Female NPT, for Outlet Fusion	PR4798050	0.946	1.28	0.535	1.614	2.225	0.807	0.744	0.492	0.984	7.874
Uponor PP-RCT Transition Saddle, 8" x 3/4", Female NPT, for Outlet Fusion	PR4798075	0.946	1.358	0.553	1.811	2.304	0.906	0.805	0.492	0.984	7.874

Part name	Part no.	Equivalent length through [ft]	End Type 1	End Type 2	Operating Temperature 1 [°F]	Operating Temperature 2 [°F]	Operating Temperature 3 [°F]	Weight per UOM [lbs/UOM]
Uponor PP-RCT Transition Saddle, 10" x 1", Female NPT, for Outlet Fusion	PR47910010	1.7	Saddle 10"	FNPT 1"	-	-	-	0.44
Uponor PP-RCT Transition Saddle, 10" x 1/2", Female NPT, for Outlet Fusion	PR47910050	1.1	Saddle 10"	FNPT 1/2"	73	140	180	0.17
Uponor PP-RCT Transition Saddle, 10" x 3/4", Female NPT, for Outlet Fusion	PR47910075	1.4	Saddle 10"	FNPT 3/4"	73	140	180	0.21
Uponor PP-RCT Transition Saddle, 1 1/2" x 1/2", Female NPT, for Outlet Fusion	PR4791550	1.1	Saddle 1-1/2"	FNPT 1/2"	73	140	180	0.15
Uponor PP-RCT Transition Saddle, 1 1/2" x 3/4", Female NPT, for Outlet Fusion	PR4791575	1.4	Saddle 1-1/2"	FNPT 3/4"	73	140	180	0.19
Uponor PP-RCT Transition Saddle, 2" x 1/2", Female NPT, for Outlet Fusion	PR4792050	1.1	Saddle 2"	FNPT 1/2"	73	140	180	0.15
Uponor PP-RCT Transition Saddle, 2" x 3/4", Female NPT, for Outlet Fusion	PR4792075	1.4	Saddle 2"	FNPT 3/4"	73	140	180	0.19
Uponor PP-RCT Transition Saddle, 2 1/2" x 1", Female NPT, for Outlet Fusion	PR4792510	1.7	Saddle 2-1/2"	FNPT 1"	73	140	180	0.42
Uponor PP-RCT Transition Saddle, 2 1/2" x 1/2", Female NPT, for Outlet Fusion	PR4792550	1.1	Saddle 2-1/2"	FNPT 1/2"	73	140	180	0.15
Uponor PP-RCT Transition Saddle, 2 1/2" x 3/4", Female NPT, for Outlet Fusion	PR4792575	1.4	Saddle 2-1/2"	FNPT 3/4"	73	140	180	0.19
Uponor PP-RCT Transition Saddle, 3" x 1", Female NPT, for Outlet Fusion	PR4793010	1.7	Saddle 3"	FNPT 1"	73	140	180	0.43
Uponor PP-RCT Transition Saddle, 3" x 1/2", Female NPT, for Outlet Fusion	PR4793050	1.1	Saddle 3"	FNPT 1/2"	73	140	180	0.15
Uponor PP-RCT Transition Saddle, 3" x 3/4", Female NPT, for Outlet Fusion	PR4793075	1.4	Saddle 3"	FNPT 3/4"	73	140	180	0.19
Uponor PP-RCT Transition Saddle, 4" x 1", Female NPT, for Outlet Fusion	PR4794010	1.7	Saddle 4"	FNPT 1"	73	140	180	0.43
Uponor PP-RCT Transition Saddle, 4" x 1/2", Female NPT, for Outlet Fusion	PR4794050	1.1	Saddle 4"	FNPT 1/2"	73	140	180	0.15
Uponor PP-RCT Transition Saddle, 4" x 3/4", Female NPT, for Outlet Fusion	PR4794075	1.4	Saddle 4"	FNPT 3/4"	73	140	180	0.2
Uponor PP-RCT Transition Saddle, 6" x 1", Female NPT, for Outlet Fusion	PR4796010	1.7	Saddle 6"	FNPT 1"	73	140	180	0.42
Uponor PP-RCT Transition Saddle, 6" x 1/2", Female NPT, for Outlet Fusion	PR4796050	1.1	Saddle 6"	FNPT 1/2"	73	140	180	0.15
Uponor PP-RCT Transition Saddle, 6" x 3/4", Female NPT, for Outlet Fusion	PR4796075	1.4	Saddle 6"	FNPT 3/4"	73	140	180	0.2
Uponor PP-RCT Transition Saddle, 8" x 1", Female NPT, for Outlet Fusion	PR4798010	1.7	Saddle 8"	FNPT 1"	73	140	180	0.44
Uponor PP-RCT Transition Saddle, 8" x 1/2", Female NPT, for Outlet Fusion	PR4798050	1.1	Saddle 8"	FNPT 1/2"	73	140	180	0.16
Uponor PP-RCT Transition Saddle, 8" x 3/4", Female NPT, for Outlet Fusion	PR4798075	1.4	Saddle 8"	FNPT 3/4"	73	140	180	0.2

Part name	Part no.	Codes	Standards	Listings
Abrazaderas de transición de PP-RCT de Uponor (fusión de salida)	All	CMC IMC UMC	ASTM E84 NSF/ANSI 14 ASTM F2389 CSA B137.11	ICC-ES-PMG 1106 IAPMO-R&T 8358 QAI P321-5 IAPMO K-12775

Installation	Related applications
-	Domestic water systems Hydronic heating and cooling systems Industrial

Footnotes	Contact information
-	<p>Uponor Inc. 5925 148th Street West Apple Valley, MN 55124 T 800.321.4739 F 952.891.2008</p> <p>Uponor Ltd. 6510 Kennedy Road Mississauga, ON L5T 2X4 T 888.594.7726 F 800.638.9517</p>