

Abrazaderas de sujeción de PP-RCT de Uponor (fusión de toma y salida)



Project Information

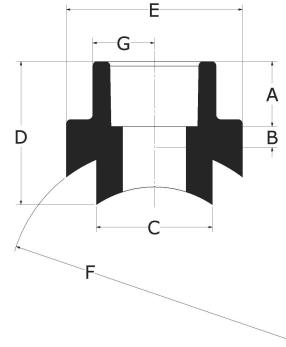
Job name:	Location:
Engineer:	Fecha de envío:
Contractor:	Presentada por:
Manufacturer's representative:	Approved by:

Technical data

Material	PP-RCT
Temp/pressure ratings	73 °F (23 °C) at 340 psi (23.44 bar) 140 °F (60 °C) at 190 psi (13.1 bar) 180 °F (82 °C) at 100 psi (6.9 bar)

Product Information and application use

Utilice los monturas de fusión de enchufes y salidas PP-RCT de Uponor con tubería mecánica PP-RCT de Uponor para transportar fluidos para calefacción y refrigeración hidráulicas o aplicaciones industriales y con tubería potable PP-RCT de Uponor para transportar agua para aplicaciones de plomería potable.



Part name	Part no.	A [inch]	B [inch]	C [inch]	D [inch]	E [inch]	F [inch]	G [inch]	Equivalent length through [ft]	End Type 1	End Type 2
Uponor PP-RCT Saddle, 10" x 1", for Outlet Fusion	PR47810010	0.748	0.276	1.264	1.979	1.535	9.874	0.768	1	Saddle 10"	Socket 1"
Uponor PP-RCT Saddle, 10" x 2 1/2", for Outlet Fusion	PR47810025	1.26	0.394	2.961	3.074	3.63	9.874	1.815	2.5	Saddle 10"	Socket 2-1/2"
Uponor PP-RCT Saddle, 10" x 3", for Outlet Fusion	PR47810030	1.378	0.433	3.559	3.374	4.354	9.874	2.177	3	Saddle 10"	Socket 3"
Uponor PP-RCT Saddle, 10" x 4", for Outlet Fusion	PR47810040	1.732	0.512	4.929	4.269	6.043	9.874	3.022	5	Saddle 10"	Socket 4"
Uponor PP-RCT Saddle, 12" x 2", for Outlet Fusion	PR47812020	1.122	0.354	2.488	3.054	3.039	12.433	1.52	2.1	Saddle 12"	Socket 2"
Uponor PP-RCT Saddle, 12" x 2 1/2", for Outlet Fusion	PR47812025	1.26	0.394	2.961	3.301	3.63	12.433	1.815	2.5	Saddle 12"	Socket 2-1/2"
Uponor PP-RCT Saddle, 12" x 3", for Outlet Fusion	PR47812030	1.378	0.433	3.559	3.566	4.354	12.433	2.177	3	Saddle 12"	Socket 3"
Uponor PP-RCT Saddle, 12" x 4", for Outlet Fusion	PR47812040	1.732	0.512	4.929	4.338	6.043	12.433	3.022	5	Saddle 12"	Socket 4"
Uponor PP-RCT Saddle, 1 1/4" x 1/2", for Outlet Fusion	PR4781350	0.571	0.157	0.984	1.27	1.496	1.575	0.524	0.6	Saddle 1-1/4"	Socket 1/2"
Uponor PP-RCT Saddle, 1 1/4" x 3/4", for Outlet Fusion	PR4781375	0.63	0.169	0.984	1.341	1.496	1.575	0.644	0.8	Saddle 1-1/4"	Socket 1/2"
Uponor PP-RCT Saddle, 1 1/2" x 1/2", for Outlet Fusion	PR4781550	0.571	0.157	0.984	1.128	1.496	1.969	0.524	0.6	Saddle 1-1/2"	Socket 1/2"
Uponor PP-RCT Saddle, 1 1/2" x 3/4", for Outlet Fusion	PR4781575	0.63	0.169	0.984	1.199	1.496	1.969	0.644	0.8	Saddle 1-1/2"	Socket 3/4"
Uponor PP-RCT Saddle, 2" x 1", for Outlet Fusion	PR4782010	0.713	0.24	1.26	1.548	1.65	2.48	0.825	1	Saddle 2"	Socket 1"
Uponor PP-RCT Saddle, 2" x 1/2", for Outlet Fusion	PR4782050	0.571	0.157	0.984	1.213	1.496	2.48	0.524	0.6	Saddle 2"	Socket 1/2"
Uponor PP-RCT Saddle, 2" x 3/4", for Outlet Fusion	PR4782075	0.63	0.165	0.984	1.28	1.496	2.48	0.644	0.8	Saddle 2"	Socket 3/4"
Uponor PP-RCT Saddle, 2 1/2" x 1", for Outlet Fusion	PR4782510	0.713	0.24	1.26	1.563	1.65	2.953	0.825	1	Saddle 2-1/2"	Socket 1"
Uponor PP-RCT Saddle, 2 1/2" x 1/2", for Outlet Fusion	PR4782550	0.571	0.157	0.984	1.254	1.496	2.953	0.524	0.6	Saddle 2-1/2"	Socket 1/2"
Uponor PP-RCT Saddle, 2 1/2" x 3/4", for Outlet Fusion	PR4782575	0.63	0.169	0.984	1.324	1.496	2.953	0.644	0.8	Saddle 2-1/2"	Socket 3/4"
Uponor PP-RCT Saddle, 3" x 1", for Outlet Fusion	PR4783010	0.713	0.24	1.26	1.602	1.65	3.543	0.825	1	Saddle 3"	Socket 1"

Uponor PP-RCT Saddle, 3" x 1/2", for Outlet Fusion	PR4783050	0.571	0.157	0.984	1.31	1.496	3.543	0.524	0.6	Saddle 3"	Socket 1/2"
Uponor PP-RCT Saddle, 3" x 3/4", for Outlet Fusion	PR4783075	0.63	0.165	0.984	1.377	1.496	3.543	0.644	0.8	Saddle 3"	Socket 3/4"
Uponor PP-RCT Saddle, 4" x 1", for Outlet Fusion	PR4784010	0.713	0.24	1.26	1.741	1.65	4.921	0.825	1	Saddle 4"	Socket 1"
Uponor PP-RCT Saddle, 4" x 1 1/4", for Outlet Fusion	PR4784013	0.807	0.264	1.575	1.927	2.047	4.921	1.024	1.3	Saddle 4"	Socket 1-1/4"
Uponor PP-RCT Saddle, 4" x 1 1/2", for Outlet Fusion	PR4784015	0.925	0.335	1.969	2.228	2.594	4.921	1.297	1.7	Saddle 4"	Socket 1-1/2"
Uponor PP-RCT Saddle, 4" x 2", for Outlet Fusion	PR4784020	1.079	0.413	2.48	2.666	3.264	4.921	1.632	2.1	Saddle 4"	Socket 2"
Uponor PP-RCT Saddle, 4" x 1/2", for Outlet Fusion	PR4784050	0.571	0.157	0.984	1.47	1.496	4.921	0.524	0.6	Saddle 4"	Socket 1/2"
Uponor PP-RCT Saddle, 4" x 3/4", for Outlet Fusion	PR4784075	0.63	0.165	0.984	1.537	1.496	4.921	0.644	0.8	Saddle 4"	Socket 3/4"
Uponor PP-RCT Saddle, 6" x 1", for Outlet Fusion	PR4786010	0.713	0.24	1.26	1.74	1.65	6.299	0.825	1	Saddle 6"	Socket 1"
Uponor PP-RCT Saddle, 6" x 1 1/4", for Outlet Fusion	PR4786013	0.807	0.264	1.575	1.906	2.047	6.299	1.024	1.3	Saddle 6"	Socket 1-1/4"
Uponor PP-RCT Saddle, 6" x 1 1/2", for Outlet Fusion	PR4786015	0.925	0.335	1.969	2.171	2.594	6.299	1.297	1.7	Saddle 6"	Socket 1-1/2"
Uponor PP-RCT Saddle, 6" x 2", for Outlet Fusion	PR4786020	1.079	0.413	2.48	2.535	3.264	6.299	1.632	2.1	Saddle 6"	Socket 2"
Uponor PP-RCT Saddle, 6" x 2 1/2", for Outlet Fusion	PR4786025	1.181	0.492	2.953	2.874	3.909	6.299	1.955	2.5	Saddle 6"	Socket 2-1/2"
Uponor PP-RCT Saddle, 8" x 1", for Outlet Fusion	PR4788010	0.748	0.276	1.264	1.995	1.535	7.898	0.768	1	Saddle 8"	Socket 1"
Uponor PP-RCT Saddle, 8" x 1 1/2", for Outlet Fusion	PR4788015	0.984	0.315	1.976	2.37	2.409	7.898	1.205	1.7	Saddle 8"	Socket 1-1/2"
Uponor PP-RCT Saddle, 8" x 2", for Outlet Fusion	PR4788020	1.122	0.354	2.488	2.648	3.039	7.898	1.52	2.1	Saddle 8"	Socket 2"
Uponor PP-RCT Saddle, 8" x 2 1/2", for Outlet Fusion	PR4788025	1.26	0.394	2.961	2.943	3.63	7.898	1.815	2.5	Saddle 8"	Socket 2-1/2"
Uponor PP-RCT Saddle, 8" x 3", for Outlet Fusion	PR4788030	1.378	0.433	3.559	3.291	4.354	7.898	2.177	3	Saddle 8"	Socket 3"
Uponor PP-RCT Saddle, 8" x 4", for Outlet Fusion	PR4788040	1.732	0.512	4.929	4.407	6.043	7.898	3.022	5	Saddle 8"	Socket 4"
Uponor PP-RCT Saddle, 6" x 3", for Outlet Fusion	PR4786030	1.181	0.591	3.543	3.237	4.697	6.299	2.348	3	Saddle 6"	Socket 3"
Uponor PP-RCT Saddle, 10" x 2", for Outlet Fusion	PR47810020	1.122	0.354	2.488	2.807	3.039	9.874	1.52	2.1	Saddle 10"	Socket 2"
Uponor PP-RCT Saddle, 10" x 1 1/4", for Outlet Fusion	PR47810013	0.807	0.315	1.575	2.339	2.047	9.877	1.024	1.3	Saddle 10"	Socket 1-1/4"
Uponor PP-RCT Saddle, 10" x 1 1/2", for Outlet Fusion	PR47810015	0.925	0.197	1.969	2.393	2.594	9.875	1.297	1.7	Saddle 10"	Socket 1-1/2"
Uponor PP-RCT Saddle, 10" x 1/2", for Outlet Fusion	PR47810050	0.61	0.197	0.787	1.952	1.087	9.882	0.543	0.6	Saddle 10"	Socket 1/2"
Uponor PP-RCT Saddle, 10" x 3/4", for Outlet Fusion	PR47810075	0.709	0.236	0.996	2.1	1.354	9.875	0.677	0.8	Saddle 10"	Socket 3/4"
Uponor PP-RCT Saddle, 2 1/2" x 1 1/4", for Outlet Fusion	PR4782513	0.807	0.264	1.575	1.715	2.047	2.953	1.024	1.3	Saddle 2-1/2"	Socket 1-1/4"
Uponor PP-RCT Saddle, 3" x 1 1/4", for Outlet Fusion	PR4783013	0.807	0.264	1.575	1.716	2.047	3.544	1.024	1.3	Saddle 3"	Socket 1-1/4"
Uponor PP-RCT Saddle, 6" x 1/2", for Outlet Fusion	PR4786050	0.571	0.157	0.984	1.483	1.496	6.304	0.524	0.6	Saddle 6"	Socket 1/2"
Uponor PP-RCT Saddle, 6" x 3/4", for Outlet Fusion	PR4786075	0.63	0.165	0.984	1.55	1.496	6.304	0.644	0.8	Saddle 6"	Socket 3/4"
Uponor PP-RCT Saddle, 8" x 1 1/4", for Outlet Fusion	PR4788013	0.807	0.315	1.575	2.107	2.047	7.899	1.024	1.3	Saddle 8"	Socket 1-1/4"
Uponor PP-RCT Saddle, 8" x 1/2", for Outlet Fusion	PR4788050	0.571	0.197	0.787	1.699	1.046	7.904	0.523	0.6	Saddle 8"	Socket 1/2"
Uponor PP-RCT Saddle, 8" x 3/4", for Outlet Fusion	PR4788075	0.63	0.236	0.984	1.788	1.287	7.906	0.644	0.8	Saddle 8"	Socket 3/4"

Part name	Part no.	Weight per UOM [lbs/UOM]
Uponor PP-RCT Saddle, 10" x 1", for Outlet Fusion	PR47810010	0.06
Uponor PP-RCT Saddle, 10" x 2 1/2", for Outlet Fusion	PR47810025	0.67

Uponor PP-RCT Saddle, 10" x 3", for Outlet Fusion	PR47810030	0.87
Uponor PP-RCT Saddle, 10" x 4", for Outlet Fusion	PR47810040	2.12
Uponor PP-RCT Saddle, 12" x 2", for Outlet Fusion	PR47812020	0.25
Uponor PP-RCT Saddle, 12" x 2 1/2", for Outlet Fusion	PR47812025	0.69
Uponor PP-RCT Saddle, 12" x 3", for Outlet Fusion	PR47812030	0.89
Uponor PP-RCT Saddle, 12" x 4", for Outlet Fusion	PR47812040	2.11
Uponor PP-RCT Saddle, 1 1/4" x 1/2", for Outlet Fusion	PR4781350	0.03
Uponor PP-RCT Saddle, 1 1/4" x 3/4", for Outlet Fusion	PR4781375	0.03
Uponor PP-RCT Saddle, 1 1/2" x 1/2", for Outlet Fusion	PR4781550	0.03
Uponor PP-RCT Saddle, 1 1/2" x 3/4", for Outlet Fusion	PR4781575	0.03
Uponor PP-RCT Saddle, 2" x 1", for Outlet Fusion	PR4782010	0.05
Uponor PP-RCT Saddle, 2" x 1/2", for Outlet Fusion	PR4782050	0.03
Uponor PP-RCT Saddle, 2" x 3/4", for Outlet Fusion	PR4782075	0.03
Uponor PP-RCT Saddle, 2 1/2" x 1", for Outlet Fusion	PR4782510	0.05
Uponor PP-RCT Saddle, 2 1/2" x 1/2", for Outlet Fusion	PR4782550	0.03
Uponor PP-RCT Saddle, 2 1/2" x 3/4", for Outlet Fusion	PR4782575	0.03
Uponor PP-RCT Saddle, 3" x 1", for Outlet Fusion	PR4783010	0.05
Uponor PP-RCT Saddle, 3" x 1/2", for Outlet Fusion	PR4783050	0.03
Uponor PP-RCT Saddle, 3" x 3/4", for Outlet Fusion	PR4783075	0.03
Uponor PP-RCT Saddle, 4" x 1", for Outlet Fusion	PR4784010	0.05
Uponor PP-RCT Saddle, 4" x 1 1/4", for Outlet Fusion	PR4784013	0.09
Uponor PP-RCT Saddle, 4" x 1 1/2", for Outlet Fusion	PR4784015	0.18
Uponor PP-RCT Saddle, 4" x 2", for Outlet Fusion	PR4784020	0.33
Uponor PP-RCT Saddle, 4" x 1/2", for Outlet Fusion	PR4784050	0.03
Uponor PP-RCT Saddle, 4" x 3/4", for Outlet Fusion	PR4784075	0.03
Uponor PP-RCT Saddle, 6" x 1", for Outlet Fusion	PR4786010	0.05
Uponor PP-RCT Saddle, 6" x 1 1/4", for Outlet Fusion	PR4786013	0.08
Uponor PP-RCT Saddle, 6" x 1 1/2", for Outlet Fusion	PR4786015	0.16
Uponor PP-RCT Saddle, 6" x 2", for Outlet Fusion	PR4786020	0.3
Uponor PP-RCT Saddle, 6" x 2 1/2", for Outlet Fusion	PR4786025	0.49
Uponor PP-RCT Saddle, 8" x 1", for Outlet Fusion	PR4788010	0.06
Uponor PP-RCT Saddle, 8" x 1 1/2", for Outlet Fusion	PR4788015	0.2
Uponor PP-RCT Saddle, 8" x 2", for Outlet Fusion	PR4788020	0.22
Uponor PP-RCT Saddle, 8" x 2 1/2", for Outlet Fusion	PR4788025	0.68
Uponor PP-RCT Saddle, 8" x 3", for Outlet Fusion	PR4788030	0.88
Uponor PP-RCT Saddle, 8" x 4", for Outlet Fusion	PR4788040	2.18
Uponor PP-RCT Saddle, 6" x 3", for Outlet Fusion	PR4786030	0.75
Uponor PP-RCT Saddle, 10" x 2", for Outlet Fusion	PR47810020	0.23
Uponor PP-RCT Saddle, 10" x 1 1/4", for Outlet Fusion	PR47810013	0.11
Uponor PP-RCT Saddle, 10" x 1 1/2", for Outlet Fusion	PR47810015	0.2
Uponor PP-RCT Saddle, 10" x 1/2", for Outlet Fusion	PR47810050	0.02
Uponor PP-RCT Saddle, 10" x 3/4", for Outlet Fusion	PR47810075	0.03
Uponor PP-RCT Saddle, 2 1/2" x 1 1/4", for Outlet Fusion	PR4782513	0.09
Uponor PP-RCT Saddle, 3" x 1 1/4", for Outlet Fusion	PR4783013	0.09
Uponor PP-RCT Saddle, 6" x 1/2", for Outlet Fusion	PR4786050	0.03
Uponor PP-RCT Saddle, 6" x 3/4", for Outlet Fusion	PR4786075	0.03
Uponor PP-RCT Saddle, 8" x 1 1/4", for Outlet Fusion	PR4788013	0.11

Uponor PP-RCT Saddle, 8" x 1/2", for Outlet Fusion

PR4788050

0.02

Uponor PP-RCT Saddle, 8" x 3/4", for Outlet Fusion

PR4788075

0.03

Part name	Part no.	Codes	Standards	Listings
Abrazaderas de sujeción de PP-RCT de Uponor (fusión de toma y salida)	All	CMC IMC UMC	ASTM E84 NSF/ANSI 14 ASTM F2389 CSA B137.11	ICC-ES-PMG 1106 IAPMO-R&T 8358 QAI P321-5 IAPMO K-12775
In addition, the following parts have additional codes, standards, or listings:				
Uponor PP-RCT Saddle, 10" x 1 1/4", for Outlet Fusion	PR47810013		NSF/ANSI/CAN 61	
Uponor PP-RCT Saddle, 10" x 1 1/2", for Outlet Fusion	PR47810015		NSF/ANSI/CAN 61	
Uponor PP-RCT Saddle, 10" x 1/2", for Outlet Fusion	PR47810050		NSF/ANSI/CAN 61	
Uponor PP-RCT Saddle, 10" x 3/4", for Outlet Fusion	PR47810075		NSF/ANSI/CAN 61	
Uponor PP-RCT Saddle, 2 1/2" x 1 1/4", for Outlet Fusion	PR4782513		NSF/ANSI/CAN 61	
Uponor PP-RCT Saddle, 3" x 1 1/4", for Outlet Fusion	PR4783013		NSF/ANSI/CAN 61	
Uponor PP-RCT Saddle, 6" x 1/2", for Outlet Fusion	PR4786050		NSF/ANSI/CAN 61	
Uponor PP-RCT Saddle, 6" x 3/4", for Outlet Fusion	PR4786075		NSF/ANSI/CAN 61	
Uponor PP-RCT Saddle, 8" x 1 1/4", for Outlet Fusion	PR4788013		NSF/ANSI/CAN 61	
Uponor PP-RCT Saddle, 8" x 1/2", for Outlet Fusion	PR4788050		NSF/ANSI/CAN 61	
Uponor PP-RCT Saddle, 8" x 3/4", for Outlet Fusion	PR4788075		NSF/ANSI/CAN 61	

Installation	Related applications
Utilice métodos de conexión de fusión de socket aprobados. Consulte el manual de PP-RCT de Uponor para obtener todos los detalles.	Sistemas hidrónicos de calefacción y refrigeración Industrial Sistemas de agua domésticos

Footnotes	Contact information		
-	<table border="0"> <tr> <td>Uponor Inc. 5925 148th Street West Apple Valley, MN 55124 T 800.321.4739 F 952.891.2008</td> <td>Uponor Ltd. 6510 Kennedy Road Mississauga, ON L5T 2X4 T 888.594.7726 F 800.638.9517</td> </tr> </table>	Uponor Inc. 5925 148th Street West Apple Valley, MN 55124 T 800.321.4739 F 952.891.2008	Uponor Ltd. 6510 Kennedy Road Mississauga, ON L5T 2X4 T 888.594.7726 F 800.638.9517
Uponor Inc. 5925 148th Street West Apple Valley, MN 55124 T 800.321.4739 F 952.891.2008	Uponor Ltd. 6510 Kennedy Road Mississauga, ON L5T 2X4 T 888.594.7726 F 800.638.9517		