

# Adaptadores con rosca macho de bronce sin plomo (LF) de Uponor (fusión de toma)



## Project Information

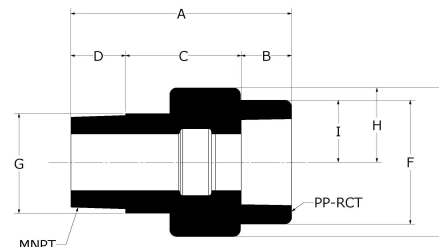
Job name:	Location:
Engineer:	Fecha de envío:
Contractor:	Presentada por:
Manufacturer's representative:	Approved by:

## Technical data

Material PP-RCT  
 Prop 65 label required? Yes

## Product Information and application use

Utilice los adaptadores roscados macho de latón sin plomo (LF) de Uponor para conexiones de fusión de enchufe a la tubería mecánica PP-RCT de Uponor para transportar fluido para calefacción y refrigeración hidrónica o aplicaciones industriales y para conexiones de fusión de enchufe a la tubería potable PP-RCT de Uponor para transportar agua para aplicaciones de plomería potable.



Part name	Part no.	A [inch]	B [inch]	C [inch]	D [inch]	E [inch]	F [inch]	G [inch]	H [inch]	I [inch]	Equivalent length through [ft]
Uponor LF Brass Male Threaded Adapter, 1" PP-RCT x 1" NPT	PR4521010	2.437	0.713	0.937	0.69	2.081	1.728	1.332	1.041	0.864	2.4
Uponor LF Brass Male Threaded Adapter, 1" PP-RCT x 3/4" NPT	PR4521075	2.236	0.776	0.831	0.546	1.906	1.693	1.063	0.953	0.846	1.9
Uponor LF Brass Male Threaded Adapter, 1 1/4" PP-RCT x 1 1/4" NPT	PR4521313	2.835	0.807	1.22	0.71	2.756	2.146	1.676	1.378	1.073	3.1
Uponor LF Brass Male Threaded Adapter, 1 1/2" PP-RCT x 1 1/2" NPT	PR4521515	3.13	0.925	1.378	0.72	3.228	2.665	1.917	1.614	1.333	3.8
Uponor LF Brass Male Threaded Adapter, 2" PP-RCT x 2" NPT	PR4522020	3.455	1.079	1.51	0.76	3.839	3.287	2.392	1.919	1.644	4.8
Uponor LF Brass Male Threaded Adapter, 1/2" PP-RCT x 1/2" NPT	PR4525050	1.969	0.571	0.787	0.54	1.398	1.079	0.829	0.699	0.539	1.5
Uponor LF Brass Male Threaded Adapter, 3/4" PP-RCT x 1/2" NPT	PR4527550	2.059	0.63	0.819	0.54	1.37	1.346	0.829	0.685	0.673	1.5
Uponor LF Brass Male Threaded Adapter, 3/4" PP-RCT x 3/4" NPT	PR4527575	2.067	0.63	0.807	0.55	1.606	1.348	1.063	0.803	0.674	1.9

Part name	Part no.	End Type 1	End Type 2	Operating Temperature 1 [°F]	Operating Temperature 2 [°F]	Operating Temperature 3 [°F]	Weight per UOM [lbs/UOM]
Uponor LF Brass Male Threaded Adapter, 1" PP-RCT x 1" NPT	PR4521010	Socket 1"	MNPT 1"	73 °F (23 °C) at 270 psi (23 °C)	120 °F (49 °C) at 176 psi (49 °C)	180 °F (82 °C) at 120 psi (82 °C)	0.37
Uponor LF Brass Male Threaded Adapter, 1" PP-RCT x 3/4" NPT	PR4521075	Socket 1"	MNPT 3/4"	73 °F (23 °C) at 340 psi (23 °C)	140 °F (49 °C) at 190 psi (49 °C)	180 °F (82 °C) at 100 psi (82 °C)	0.24
Uponor LF Brass Male Threaded Adapter, 1 1/4" PP-RCT x 1 1/4" NPT	PR4521313	Socket 1-1/4"	MNPT 1-1/4"	73 °F (23 °C) at 270 psi (23 °C)	120 °F (49 °C) at 176 psi (49 °C)	180 °F (82 °C) at 120 psi (82 °C)	0.64
Uponor LF Brass Male Threaded Adapter, 1 1/2" PP-RCT x 1 1/2" NPT	PR4521515	Socket 1-1/2"	MNPT 1-1/2"	73 °F (23 °C) at 270 psi (23 °C)	120 °F (49 °C) at 176 psi (49 °C)	180 °F (82 °C) at 120 psi (82 °C)	0.87
Uponor LF Brass Male Threaded Adapter, 2" PP-RCT x 2" NPT	PR4522020	Socket 2"	MNPT 2"	73 °F (23 °C) at 270 psi (23 °C)	120 °F (49 °C) at 176 psi (49 °C)	180 °F (82 °C) at 120 psi (82 °C)	1.25
Uponor LF Brass Male Threaded Adapter, 1/2" PP-RCT x 1/2" NPT	PR4525050	Socket 1/2"	MNPT 1/2"	73 °F (23 °C) at 270 psi (23 °C)	120 °F (49 °C) at 176 psi (49 °C)	180 °F (82 °C) at 120 psi (82 °C)	0.15
Uponor LF Brass Male Threaded Adapter, 3/4" PP-RCT x 1/2" NPT	PR4527550	Socket 3/4"	MNPT 1/2"	73 °F (23 °C) at 340 psi (23 °C)	140 °F (49 °C) at 190 psi (49 °C)	180 °F (82 °C) at 100 psi (82 °C)	0.15

Uponor LF Brass Male Threaded Adapter, 3/4" PP-RCT x 3/4" NPT	PR4527575	Socket 3/4"	MNPT 3/4"	73 °F (23 °C) at 270 psi (23 °C)	120 °F (49 °C) at 176 psi (49 °C)	180 °F (82 °C) at 120 psi (82 °C)	0.22
---	-----------	-------------	-----------	----------------------------------	-----------------------------------	-----------------------------------	------

Part name	Part no.	Codes	Standards	Listings
Adaptadores con rosca macho de bronce sin plomo (LF) de Uponor (fusión de toma)	All	CMC IPC UMC	NSF/ANSI/CAN 61 ASTM E84 NSF/ANSI 14 ASTM F2389 CSA B137.11	ICC-ES-PMG 1106 IAPMO-R&T 8358 QAI P321-5 IAPMO K-12775

Installation	Related applications
Utilice métodos de conexión de fusión de socket aprobados. Consulte el manual de PP-RCT de Uponor para obtener todos los detalles.	Sistemas de agua domésticos Sistemas hidráulicos de calefacción y refrigeración Industrial

Footnotes	Contact information		
-	<table border="0"> <tr> <td>Uponor Inc. 5925 148th Street West Apple Valley, MN 55124 T 800.321.4739 F 952.891.2008</td> <td>Uponor Ltd. 6510 Kennedy Road Mississauga, ON L5T 2X4 T 888.594.7726 F 800.638.9517</td> </tr> </table>	Uponor Inc. 5925 148th Street West Apple Valley, MN 55124 T 800.321.4739 F 952.891.2008	Uponor Ltd. 6510 Kennedy Road Mississauga, ON L5T 2X4 T 888.594.7726 F 800.638.9517
Uponor Inc. 5925 148th Street West Apple Valley, MN 55124 T 800.321.4739 F 952.891.2008	Uponor Ltd. 6510 Kennedy Road Mississauga, ON L5T 2X4 T 888.594.7726 F 800.638.9517		