

# Acoplamiento de EP ProPEX

## Project Information

|                                |                 |
|--------------------------------|-----------------|
| Job name:                      | Location:       |
| Engineer:                      | Fecha de envío: |
| Contractor:                    | Presentada por: |
| Manufacturer's representative: | Approved by:    |

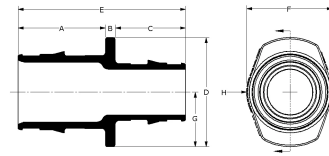
## Technical data

|                       |  |
|-----------------------|--|
| Material              | Engineered Polymer   |
| Temp/pressure ratings | 73 °F (23 °C) at 160 psi (11 bar)<br>180 °F (82 °C) at 100 psi (6.9 bar)<br>200 °F (93 °C) at 80 psi (5.5 bar) |

## Product Information and application use

ProPEX® engineered polymer (EP) coupling is available for use in hot and cold domestic potable water distribution, residential fire safety and radiant heating and cooling systems. Each end of the coupling is manufactured with an Uponor ProPEX fitting for connections to Uponor AquaPEX® or Wirsbo hePEX™ tubing.

Note: Temperature and pressure ratings stated are hydrostatic ratings. For domestic hot-water (DHW) and DHW recirculation installations, operating conditions should not exceed 140°F (60°C) at 80 psi (5.5 bar) in accordance with ASTM F2023. For additional information regarding application-specific temperature and pressure ratings, refer to the Uponor PEX Piping Systems Design and Installation Manual.



| Part name                                   | Part no. | A [inch] | B [inch] | C [inch] | D [inch] | E [inch] | F [inch] | G [inch] | H [inch] | Cv    | Equivalent length through [ft] |
|---|----------|----------|----------|----------|----------|----------|----------|----------|----------|-------|--------------------------------|
| ProPEX EP Coupling, 3/8" PEX x 3/8" PEX     | Q4773838 | 0.604    | 0.12     | 0.604    | 0.7      | 1.327    | 0.525    | 0.35     | 0.263    | -     | 0.8                            |
| ProPEX EP Coupling, 1/2" PEX x 1/2" PEX     | Q4775050 | 0.722    | 0.125    | 0.722    | 0.87     | 1.569    | 0.695    | 0.435    | 0.348    | 8.3   | 0.8                            |
| ProPEX EP Coupling, 1/2" PEX x 3/4" PEX     | Q4775075 | 0.723    | 0.117    | 0.959    | 1.22     | 1.799    | 0.98     | 0.61     | 0.49     | 5.2   | 2.6                            |
| ProPEX EP Coupling, 5/8" PEX x 5/8" PEX     | Q4776363 | 0.879    | 0.119    | 0.879    | 1.01     | 1.877    | 0.88     | 0.505    | 0.44     | -     | 2.7                            |
| ProPEX EP Coupling, 3/4" PEX x 3/4" PEX     | Q4777575 | 0.955    | 0.125    | 0.955    | 1.22     | 2.035    | 0.965    | 0.61     | 0.49     | 19    | 0.9                            |
| ProPEX EP Coupling, 3/4" PEX x 1" PEX       | Q4777510 | 0.961    | 0.125    | 1.19     | 1.48     | 2.276    | 1.165    | 0.74     | 0.59     | 12.5  | 2.7                            |
| ProPEX EP Coupling, 1" PEX x 1" PEX         | Q4771010 | 1.191    | 0.125    | 1.191    | 1.48     | 2.507    | 1.165    | 0.74     | 0.59     | 33.8  | 0.9                            |
| ProPEX EP Coupling, 1 1/4" PEX x 3/4" PEX   | Q4771307 | 1.459    | 0.15     | 0.963    | 1.74     | 2.573    | 1.38     | 0.87     | 0.69     | 10.9  | 3.6                            |
| ProPEX EP Coupling, 1 1/4" PEX x 1" PEX     | Q4771310 | 1.459    | 0.15     | 1.198    | 1.74     | 2.807    | 1.38     | 0.87     | 0.69     | 22.3  | 2.6                            |
| ProPEX EP Coupling, 1 1/4" PEX x 1 1/4" PEX | Q4771313 | 1.459    | 0.15     | 1.459    | 1.74     | 3.069    | 1.38     | 0.87     | 0.69     | 53.3  | 1.1                            |
| ProPEX EP Coupling, 1 1/2" PEX x 3/4" PEX   | Q4771507 | 1.719    | 0.15     | 0.965    | 1.92     | 2.834    | 1.53     | 0.96     | 0.765    | 10.8  | 3.5                            |
| ProPEX EP Coupling, 1 1/2" PEX x 1" PEX     | Q4771510 | 1.719    | 0.15     | 1.178    | 1.92     | 3.048    | 1.52     | 0.96     | 0.76     | 19    | 4.3                            |
| ProPEX EP Coupling, 1 1/2" PEX x 1 1/4" PEX | Q4771513 | 1.719    | 0.15     | 1.461    | 1.92     | 3.33     | 1.53     | 0.96     | 0.765    | 33.9  | 3.7                            |
| ProPEX EP Coupling, 1 1/2" PEX x 1 1/2" PEX | Q4771515 | 1.719    | 0.15     | 1.719    | 1.92     | 3.588    | 1.53     | 0.96     | 0.765    | 69.5  | 1.4                            |
| ProPEX EP Coupling, 2" PEX x 1 1/2" PEX     | Q4772015 | 2.164    | 0.25     | 1.726    | 2.7      | 4.14     | 2.2      | 1.35     | 1.1      | 45.2  | 4.59                           |
| ProPEX EP Coupling, 2" PEX x 2" PEX         | Q4772020 | 2.164    | 0.25     | 2.164    | 2.7      | 4.578    | 2.2      | 1.35     | 1.1      | 107.8 | -                              |
| ProPEX EP Coupling, 2 1/2" PEX x 1 1/4" PEX | Q4772513 | 2.84     | 0.257    | 1.469    | 3.6      | 4.566    | 2.8      | 1.8      | 1.4      | 29.3  | 5.4                            |
| ProPEX EP Coupling, 2 1/2" PEX x 1 1/2" PEX | Q4772515 | 2.84     | 0.25     | 1.734    | 3.6      | 4.824    | 2.8      | 1.82     | 1.4      | 35.9  | 7.5                            |
| ProPEX EP Coupling, 2 1/2" PEX x 2" PEX     | Q4772520 | 2.84     | 0.25     | 2.172    | 3.6      | 5.262    | 2.8      | 1.82     | 1.4      | 82.6  | 5.4                            |
| ProPEX EP Coupling, 2 1/2" PEX x 2 1/2" PEX | Q4772525 | 2.84     | 0.25     | 2.84     | 3.6      | 5.931    | 2.8      | 1.82     | 1.4      | 219.1 | 1.7                            |
| ProPEX EP Coupling, 3" PEX x 2" PEX         | Q4773020 | 3.391    | 0.25     | 2.177    | 4.2      | 5.819    | 3.3      | 2.12     | 1.65     | 73.4  | 7.2                            |
| ProPEX EP Coupling, 3" PEX x 2 1/2" PEX     | Q4773025 | 3.391    | 0.25     | 2.846    | 4.2      | 6.487    | 3.3      | 2.12     | 1.65     | 136.2 | 7.1                            |
| ProPEX EP Coupling, 3" PEX x 3" PEX         | Q4773030 | 3.391    | 0.25     | 3.391    | 4.2      | 7.033    | 3.3      | 2.12     | 1.65     | 320.6 | 1.9                            |

| Part name                               | Part no. | End Type 1  | End Type 2  | Prop 65 label required? | Weight per UOM [lbs/UOM] |
|---|----------|-------------|-------------|-------------------------|--------------------------|
| ProPEX EP Coupling, 3/8" PEX x 3/8" PEX | Q4773838 | ProPEX 3/8" | ProPEX 3/8" | -                       | 0.01                     |

|   |          |               |               |    |      |
|---|----------|---------------|---------------|----|------|
| ProPEX EP Coupling, 1/2" PEX x 1/2" PEX     | Q4775050 | ProPEX 1/2"   | ProPEX 1/2"   | -  | 0.01 |
| ProPEX EP Coupling, 1/2" PEX x 3/4" PEX     | Q4775075 | ProPEX 1/2"   | ProPEX 3/4"   | -  | 0.03 |
| ProPEX EP Coupling, 5/8" PEX X 5/8" PEX     | Q4776363 | ProPEX 5/8"   | ProPEX 5/8"   | -  | 0.01 |
| ProPEX EP Coupling, 3/4" PEX x 3/4" PEX     | Q4777575 | ProPEX 3/4"   | ProPEX 3/4"   | No | 0.02 |
| ProPEX EP Coupling, 3/4" PEX x 1" PEX       | Q4777510 | ProPEX 3/4"   | ProPEX 1"     | -  | 0.04 |
| ProPEX EP Coupling, 1" PEX x 1" PEX         | Q4771010 | ProPEX 1"     | ProPEX 1"     | -  | 0.04 |
| ProPEX EP Coupling, 1 1/4" PEX x 3/4" PEX   | Q4771307 | ProPEX 1-1/4" | ProPEX 3/4"   | -  | 0.05 |
| ProPEX EP Coupling, 1 1/4" PEX x 1" PEX     | Q4771310 | ProPEX 1-1/4" | ProPEX 1"     | -  | 0.06 |
| ProPEX EP Coupling, 1 1/4" PEX x 1 1/4" PEX | Q4771313 | ProPEX 1-1/4" | ProPEX 1-1/4" | -  | 0.07 |
| ProPEX EP Coupling, 1 1/2" PEX x 3/4" PEX   | Q4771507 | ProPEX 1-1/2" | ProPEX 3/4"   | -  | 0.07 |
| ProPEX EP Coupling, 1 1/2" PEX x 1" PEX     | Q4771510 | ProPEX 1-1/2" | ProPEX 1"     | -  | 0.08 |
| ProPEX EP Coupling, 1 1/2" PEX x 1 1/4" PEX | Q4771513 | ProPEX 1-1/2" | ProPEX 1-1/4" | -  | 0.09 |
| ProPEX EP Coupling, 1 1/2" PEX x 1 1/2" PEX | Q4771515 | ProPEX 1-1/2" | ProPEX 1-1/2" | -  | 0.1  |
| ProPEX EP Coupling, 2" PEX x 1 1/2" PEX     | Q4772015 | ProPEX 2"     | ProPEX 1-1/2" | -  | 0.19 |
| ProPEX EP Coupling, 2" PEX x 2" PEX         | Q4772020 | ProPEX 2"     | ProPEX 2"     | -  | -    |
| ProPEX EP Coupling, 2 1/2" PEX x 1 1/4" PEX | Q4772513 | ProPEX 2-1/2" | ProPEX 1-1/4" | -  | 0.34 |
| ProPEX EP Coupling, 2 1/2" PEX x 1 1/2" PEX | Q4772515 | ProPEX 2-1/2" | ProPEX 1-1/2" | -  | 0.35 |
| ProPEX EP Coupling, 2 1/2" PEX x 2" PEX     | Q4772520 | ProPEX 2-1/2" | ProPEX 2"     | -  | 0.4  |
| ProPEX EP Coupling, 2 1/2" PEX x 2 1/2" PEX | Q4772525 | ProPEX 2-1/2" | ProPEX 2-1/2" | -  | 0.51 |
| ProPEX EP Coupling, 3" PEX x 2" PEX         | Q4773020 | ProPEX 3"     | ProPEX 2"     | -  | 0.6  |
| ProPEX EP Coupling, 3" PEX x 2 1/2" PEX     | Q4773025 | ProPEX 3"     | ProPEX 2-1/2" | -  | 0.71 |
| ProPEX EP Coupling, 3" PEX x 3" PEX         | Q4773030 | ProPEX 3"     | ProPEX 3"     | -  | 0.85 |

| Part name   | Part no. | Codes                                      | Standards  | Listings  |
|---|----------|--|--|---|
| Acoplamiento de EP ProPEX   | All      | IMC UPC IBC IRC IPC NPC of Canada UMC NSPC | ASTM F1960 ASTM E119/UL 263 ASTM E84 ASTM E814/ULC S115 ASTM F877 CSA B137.5 ULC S102.2 ULC S101 | IAPMO-ES ICC-ES-PMG UL U.P.Code cQAlus P321 HUD MR 1269 |
| In addition, the following parts have additional codes, standards, or listings: |          |  |  |   |
| ProPEX EP Coupling, 3/8" PEX x 3/8" PEX   | Q4773838 |  | NSF/ANSI/CAN 61 NSF/ANSI 14  | cNSFus-pw   |
| ProPEX EP Coupling, 1/2" PEX x 1/2" PEX   | Q4775050 |  | NSF/ANSI/CAN 61 NSF/ANSI 14  | cNSFus-pw   |
| ProPEX EP Coupling, 1/2" PEX x 3/4" PEX   | Q4775075 |  | NSF/ANSI/CAN 61 NSF/ANSI 14  | cNSFus-pw   |
| ProPEX EP Coupling, 5/8" PEX X 5/8" PEX   | Q4776363 |  | NSF-61 NSF-14  | cNSFus-pw   |
| ProPEX EP Coupling, 3/4" PEX x 3/4" PEX   | Q4777575 |  | UL 1821 NSF/ANSI/CAN 61 NSF/ANSI 14  | cNSFus-pw-fs  |
| ProPEX EP Coupling, 3/4" PEX x 1" PEX   | Q4777510 |  | UL 1821 NSF/ANSI/CAN 61 NSF/ANSI 14  | cNSFus-pw-fs  |
| ProPEX EP Coupling, 1" PEX x 1" PEX   | Q4771010 |  | UL 1821 NSF/ANSI/CAN 61 NSF/ANSI 14  | cNSFus-pw-fs  |
| ProPEX EP Coupling, 1 1/4" PEX x 3/4" PEX                                       | Q4771307 |  | UL 1821 NSF/ANSI/CAN 61 NSF/ANSI 14  | cNSFus-pw-fs  |
| ProPEX EP Coupling, 1 1/4" PEX x 1" PEX   | Q4771310 |  | UL 1821 NSF/ANSI/CAN 61 NSF/ANSI 14  | cNSFus-pw-fs  |
| ProPEX EP Coupling, 1 1/4" PEX x 1 1/4" PEX                                     | Q4771313 |  | UL 1821 NSF/ANSI/CAN 61 NSF/ANSI 14  | cNSFus-pw-fs  |
| ProPEX EP Coupling, 1 1/2" PEX x 3/4" PEX                                       | Q4771507 |  | NSF/ANSI/CAN 61 NSF/ANSI 14  | cNSFus-pw   |
| ProPEX EP Coupling, 1 1/2" PEX x 1" PEX   | Q4771510 |  | NSF/ANSI/CAN 61 NSF/ANSI 14  | cNSFus-pw   |
| ProPEX EP Coupling, 1 1/2" PEX x 1 1/4" PEX                                     | Q4771513 |  | NSF/ANSI/CAN 61 NSF/ANSI 14  | cNSFus-pw   |
| ProPEX EP Coupling, 1 1/2" PEX x 1 1/2" PEX                                     | Q4771515 |  | NSF/ANSI/CAN 61 NSF/ANSI 14  | cNSFus-pw   |
| ProPEX EP Coupling, 2" PEX x 1 1/2" PEX   | Q4772015 |  | NSF/ANSI/CAN 61 NSF/ANSI 14  | cNSFus-pw   |
| ProPEX EP Coupling, 2" PEX x 2" PEX   | Q4772020 |  | NSF/ANSI/CAN 61 NSF/ANSI 14  | cNSFus-pw   |
| ProPEX EP Coupling, 2 1/2" PEX x 1 1/4" PEX                                     | Q4772513 |  | NSF/ANSI/CAN 61 NSF/ANSI 14  | cNSFus-pw   |
| ProPEX EP Coupling, 2 1/2" PEX x 1 1/2" PEX                                     | Q4772515 |  | NSF/ANSI/CAN 61 NSF/ANSI 14  | cNSFus-pw   |
| ProPEX EP Coupling, 2 1/2" PEX x 2" PEX   | Q4772520 |  | NSF/ANSI/CAN 61 NSF/ANSI 14  | cNSFus-pw   |
| ProPEX EP Coupling, 2 1/2" PEX x 2 1/2" PEX                                     | Q4772525 |  | NSF/ANSI/CAN 61 NSF/ANSI 14  | cNSFus-pw   |
| ProPEX EP Coupling, 3" PEX x 2" PEX   | Q4773020 |  | NSF/ANSI/CAN 61 NSF/ANSI 14  | cNSFus-pw   |
| ProPEX EP Coupling, 3" PEX x 2 1/2" PEX   | Q4773025 |  | NSF/ANSI/CAN 61 NSF/ANSI 14  | cNSFus-pw   |
| ProPEX EP Coupling, 3" PEX x 3" PEX   | Q4773030 |  | NSF-61 NSF-14  | cNSFus-pw   |

#### Installation

Use ProPEX rings to make the fitting. Refer to the Uponor Piping Pocket Guide, Radiant Floor Heating Installation Handbook or AquaSAFE™ Residential Fire Sprinkler Installation Guide for more information.

#### Related applications

PEX-a Plumbing Systems  
Hydronic Radiant Heating and Cooling Systems  
Permafrost Protection Systems  
Turf Conditioning Systems  
AquaSAFE™ Fire Safety Systems

#### Footnotes

#### Contact information

Uponor Inc.  
5925 148th Street West  
Apple Valley, MN 55124  
T 800.321.4739  
F 952.891.2008

Uponor Ltd.  
6510 Kennedy Road  
Mississauga, ON L5T 2X4  
T 888.594.7726  
F 800.638.9517