

Codos para zócalos ProPEX

Project Information

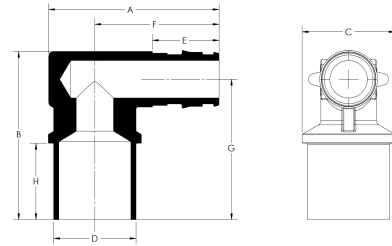
Job name:	Location:
Engineer:	Fecha de envío:
Contractor:	Presentada por:
Manufacturer's representative:	Approved by:

Technical data

Material	Brass
End type 2	Sweat 3/4"
Temp/pressure ratings	73 °F (23 °C) at 160 psi (11 bar) 180 °F (82 °C) at 100 psi (6.9 bar) 200 °F (93 °C) at 80 psi (5.5 bar)
Prop 65 label required?	Yes

Product information and application use

The Uponor ProPEX® Baseboard elbow Copper Adapter can be used in any heating system applying the use of fin-tube baseboard or unit-type heaters. One end of the tee adapter features a ProPEX fitting for an easy transition from copper pipe to Wirsbo hePEXTM tubing or Uponor AquaPEX® tubing.



Part name	Part no.	A [inch]	B [inch]	C [inch]	D [inch]	E [inch]	F [inch]	G [inch]	H [inch]	End Type 1	Weight per UOM [lbs/UOM]
ProPEX Baseboard Elbow, 1/2" PEX x 3/4" Copper Adapter	Q4385075	1.81	1.796	0.987	0.872	0.709	1.32	1.489	0.75	ProPEX 1/2"	-
ProPEX Baseboard Elbow, 5/8" PEX x 3/4" Copper Adapter	Q4386375	1.861	0.372	1.489	0.614	0.866	1.974	1.04	0.75	ProPEX 5/8"	0.17
ProPEX Baseboard Elbow, 3/4" PEX x 3/4" Copper Adapter	Q4387575	1.924	0.435	1.489	0.615	0.945	2.054	1.2	0.75	ProPEX 3/4"	0.36
ProPEX Baseboard Elbow, 1/2" PEX x 3/4" Copper Fitting Adapter	Q4375075	1.81	1.796	0.987	0.869	0.709	1.32	1.489	0.81	ProPEX 1/2"	0.16
ProPEX Baseboard Elbow, 5/8" PEX x 3/4" Copper Fitting Adapter	Q4376375	2.03	1.861	1.04	0.874	0.866	1.48	1.489	0.81	ProPEX 5/8"	0.19
ProPEX Baseboard Elbow, 3/4" PEX x 3/4" Copper Fitting Adapter	Q4377575	2.13	1.924	1.2	0.868	0.945	1.56	1.489	0.81	ProPEX 3/4"	-

Part name	Part no.	Codes	Standards	Listings
Codos para zócalos ProPEX	All	IMC	ASTM F1960 CSA B137.5 ASTM F877	IAPMO-ES ICC-ES-PMG cNSFus-rfh

In addition, the following parts have additional codes, standards, or listings:

ProPEX Baseboard Elbow, 1/2" PEX x 3/4" Copper Adapter	Q4385075	NSF/ANSI 14
ProPEX Baseboard Elbow, 5/8" PEX x 3/4" Copper Adapter	Q4386375	NSF-14
ProPEX Baseboard Elbow, 3/4" PEX x 3/4" Copper Adapter	Q4387575	NSF-14
ProPEX Baseboard Elbow, 1/2" PEX x 3/4" Copper Fitting Adapter	Q4375075	NSF/ANSI 14
ProPEX Baseboard Elbow, 5/8" PEX x 3/4" Copper Fitting Adapter	Q4376375	NSF/ANSI 14
ProPEX Baseboard Elbow, 3/4" PEX x 3/4" Copper Fitting Adapter	Q4377575	NSF/ANSI 14

Installation

Use the appropriate ProPEX Ring for tubing (sold separately). Do not solder within 18 inches of the ProPEX connection. Refer to the Uponor Radiant Floor Heating Installation Handbook for additional information.

Related applications

- Radiant Heating and Cooling Systems
- Permafrost Protection Systems
- Turf Conditioning Systems
- AquaSAFE™ Fire Safety Systems

Uponor Inc.
5925 148th Street West
Apple Valley, MN 55124
T 800.321.4739
F 952.891.2008

Uponor Ltd.
6510 Kennedy Road
Mississauga, ON L5T 2X4
T 888.594.7726
F 800.638.9517
