

# Conectores multipuerto en T de flujo de EP

## Project Information

|                                |                 |
|--------------------------------|-----------------|
| Job name:                      | Location:       |
| Engineer:                      | Fecha de envío: |
| Contractor:                    | Presentada por: |
| Manufacturer's representative: | Approved by:    |

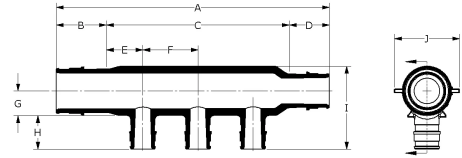
## Technical data

|                       |  |
|-----------------------|--|
| Material              | Engineered Polymer   |
| End type 3            | ProPEX 1/2"  |
| Temp/pressure ratings | 73 °F (23 °C) at 160 psi (11 bar)<br>180 °F (82 °C) at 100 psi (6.9 bar)<br>200 °F (93 °C) at 80 psi (5.5 bar) |

## Product information and application use

Engineered polymer (EP) flow-through multi-port tees feature 3/4" or 1" ProPEX® inlets with 1/2" ProPEX branch outlets. The tees are made of EP, a high-performance material used in demanding, hot-water applications

Note: Temperature and pressure ratings stated are hydrostatic ratings. For domestic hot-water (DHW) and DHW recirculation installations, operating conditions should not exceed 140°F (60°C) at 80 psi (5.5 bar) in accordance with ASTM F2023. For additional information regarding application-specific temperature and pressure ratings, refer to the Uponor PEX Piping Systems Design and Installation Manual.



| Part name  | Part no. | A [inch] | B [inch] | C [inch] | D [inch] | E [inch] | F [inch] | G [inch] | H [inch] | I [inch] | J [inch] |
|--|----------|----------|----------|----------|----------|----------|----------|----------|----------|----------|----------|
| EP Flow-through Multi-port Tee, 2 (1/2") outlets, 3/4" x 3/4" ProPEX | Q2227557 | 4.41     | 0.955    | 2.5      | 0.955    | 0.625    | 1.25     | 0.54     | 0.719    | 1.696    | 1.22     |
| EP Flow-through Multi-port Tee, 3 (1/2") outlets, 3/4" x 3/4" ProPEX | Q2237557 | 5.79     | 0.955    | 3.88     | 0.955    | 0.69     | 1.25     | 0.54     | 0.719    | 1.696    | 1.22     |
| EP Flow-through Multi-port Tee, 3 (1/2") outlets, 1" x 3/4" ProPEX   | Q2231057 | 6.196    | 1.191    | 4.05     | 0.955    | 0.775    | 1.25     | 0.6      | 0.719    | 1.879    | 1.48     |
| EP Flow-through Multi-port Tee, 4 (1/2") outlets, 3/4" x 3/4" ProPEX | Q2247557 | 7.795    | 0.955    | 5.885    | 0.955    | 0.693    | 1.5      | 0.448    | 0.719    | 1.766    | 1.199    |
| EP Flow-through Multi-port Tee, 4 (1/2") outlets, 1" x 3/4" ProPEX   | Q2241057 | 7.146    | 1.191    | 5        | 0.955    | 0.625    | 1.25     | 0.57     | 0.719    | 2.009    | 1.441    |
| EP Flow-through Multi-port Tee, 6 (1/2") outlets, 3/4" x 3/4" ProPEX | Q2267557 | 9.41     | 0.955    | 7.5      | 0.955    | 0.625    | 1.25     | 0.457    | 0.719    | 1.624    | 1.18     |
| EP Flow-through Multi-port Tee, 6 (1/2") outlets, 1" x 3/4" ProPEX   | Q2261057 | 9.646    | 1.191    | 7.5      | 0.955    | 0.625    | 1.25     | 0.57     | 0.719    | 2.009    | 1.441    |
| EP Flow-through Multi-port Tee, 6 (1/2") outlets, 1" x 1" ProPEX     | Q2261051 | 9.882    | 1.191    | 7.5      | 1.191    | 0.625    | 1.25     | 0.57     | 0.719    | 2.009    | 1.441    |
| EP Flow-through Multi-port Tee, 4 (1/2") outlets, 1" x 1" ProPEX     | Q2241051 | 7.682    | 1.191    | 5.3      | 1.191    | 0.775    | 1.25     | 0.6      | 0.719    | 1.879    | 1.48     |

| Part name  | Part no. | Cv Through | Equivalent length through [ft] | End Type 1  | End Type 2  | End Type 4 | Weight per UOM [lbs/UOM] |
|--|----------|------------|--------------------------------|-------------|-------------|------------|--------------------------|
| EP Flow-through Multi-port Tee, 2 (1/2") outlets, 3/4" x 3/4" ProPEX | Q2227557 | 15.3       | -                              | ProPEX 3/4" | ProPEX 3/4" | -          | -                        |
| EP Flow-through Multi-port Tee, 3 (1/2") outlets, 3/4" x 3/4" ProPEX | Q2237557 | 14.2       | -                              | ProPEX 3/4" | ProPEX 3/4" | ProPEX     | -                        |
| EP Flow-through Multi-port Tee, 3 (1/2") outlets, 1" x 3/4" ProPEX   | Q2231057 | 11.6       | -                              | ProPEX 1"   | ProPEX 3/4" | -          | 0.13                     |
| EP Flow-through Multi-port Tee, 4 (1/2") outlets, 3/4" x 3/4" ProPEX | Q2247557 | 13.8       | 0                              | ProPEX 3/4" | ProPEX 3/4" | ProPEX     | 0                        |
| EP Flow-through Multi-port Tee, 4 (1/2") outlets, 1" x 3/4" ProPEX   | Q2241057 | 11.7       | -                              | ProPEX 1"   | ProPEX 3/4" | -          | -                        |
| EP Flow-through Multi-port Tee, 6 (1/2") outlets, 3/4" x 3/4" ProPEX | Q2267557 | 13.2       | 0                              | ProPEX 3/4" | ProPEX 3/4" | -          | 0                        |
| EP Flow-through Multi-port Tee, 6 (1/2") outlets, 1" x 3/4" ProPEX   | Q2261057 | 11.8       | -                              | ProPEX 1"   | ProPEX 3/4" | -          | -                        |
| EP Flow-through Multi-port Tee, 6 (1/2") outlets, 1" x 1" ProPEX     | Q2261051 | 25.1       | 0                              | ProPEX 1"   | ProPEX 1"   | -          | 0                        |
| EP Flow-through Multi-port Tee, 4 (1/2") outlets, 1" x 1" ProPEX     | Q2241051 | 29.3       | -                              | ProPEX 1"   | ProPEX 1"   | -          | 0.18                     |

| Part name                                  | Part no. | Codes                                      | Standards   | Listings  |
|--|----------|--|---|---|
| Conectores multipuerto en T de flujo de EP | All      | UPC IBC IRC IPC NPC of Canada UMC NSPC IMC | ASTM E814 ULC S115 ASTM F877 ASTM F1960 CSA B137.5 ULC S102.2 ASTM E119/UL 263 NSF/ANSI/CAN 61 ULC S101 NSF/ANSI 14 | IAPMO-ES HUD MR 1269 ICC-ES-PMG cNSFus-pw UL U.P.Code cQA us P321 |

| Installation  | Related applications   |
|---|------------------------|
| For a mounting bracket, use any product designed to mount 1" copper pipe for the ¾" EP flow-through multi-port tees or 1¼" copper pipe for the 1" EP flow-through multi-port tees. For more information, refer to the Uponor Piping Systems Installation Guide. | PEX-a Plumbing Systems |

| Footnotes   | Contact information  |   |   |
|---|--|---|---|
| -   | <table border="0"> <tr> <td>Uponor Inc.<br/>5925 148th Street West<br/>Apple Valley, MN 55124<br/>T 800.321.4739<br/>F 952.891.2008</td> <td>Uponor Ltd.<br/>6510 Kennedy Road<br/>Mississauga, ON L5T 2X4<br/>T 888.594.7726<br/>F 800.638.9517</td> </tr> </table> | Uponor Inc.<br>5925 148th Street West<br>Apple Valley, MN 55124<br>T 800.321.4739<br>F 952.891.2008 | Uponor Ltd.<br>6510 Kennedy Road<br>Mississauga, ON L5T 2X4<br>T 888.594.7726<br>F 800.638.9517 |
| Uponor Inc.<br>5925 148th Street West<br>Apple Valley, MN 55124<br>T 800.321.4739<br>F 952.891.2008 | Uponor Ltd.<br>6510 Kennedy Road<br>Mississauga, ON L5T 2X4<br>T 888.594.7726<br>F 800.638.9517  |   |   |