

# Válvulas de bola residenciales de bronce sin plomo (LF) ProPEX



## Project Information

Job name:	Location:
Engineer:	Fecha de envío:
Contractor:	Presentada por:
Manufacturer's representative:	Approved by:

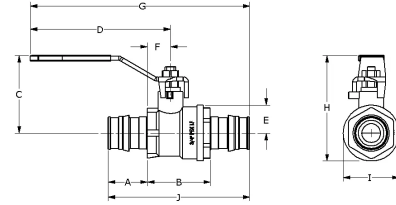
## Technical data

Material	LF Brass
Temp/pressure ratings	200 °F (93 °C) at 200 psi (13.8 bar)
Prop 65 label required?	Yes

## Product information and application use

To help meet the stringent demands of residential plumbing and hydronic distribution projects, Uponor is offering new ProPEX® ASTM F1960 lead-free (LF) brass ball valves in sizes from ½" to 1". The full-port ball valves feature a chrome-plated ball.

Note: Temperature and pressure ratings stated are hydrostatic ratings. For domestic hot-water (DHW) and DHW recirculation installations, operating conditions should not exceed 140°F (60°C) at 80 psi (5.5 bar) in accordance with ASTM F2023. For additional information regarding application-specific temperature and pressure ratings, refer to the Uponor PEX Piping Systems Design and Installation Manual.



Part name	Part no.	A [inch]	B [inch]	C [inch]	D [inch]	E [inch]	F [inch]	G [inch]	H [inch]	I [inch]	J [inch]
ProPEX LF Brass Stop and Drain Ball Valve (full port), 1" PEX x 1" PEX	LFD4811010	1.181	1.65	2.043	4.503	0.689	0.846	6.487	2.731	2.134	4.012
ProPEX LF Brass Stop and Drain Ball Valve (full port), 1/2" PEX x 1/2" PEX	LFD4815050	0.709	1.24	1.44	3.361	0.394	0.63	4.68	1.834	1.459	2.657
ProPEX LF Brass Stop and Drain Ball Valve (full port), 3/4" PEX x 3/4" PEX	LFD4817575	0.945	1.398	1.621	2.784	0.531	0.65	4.976	2.153	1.839	3.287
ProPEX LF Brass Ball Valve (full port), 1" PEX x 1" PEX	LFR4811010	1.181	1.374	2.043	4.503	0.689	0.571	6.487	2.731	1.772	3.736
ProPEX LF Brass Ball Valve (full port), 1/2" PEX x 1/2" PEX	LFR4815050	0.709	1.004	1.44	3.361	0.394	0.394	4.68	1.834	1.012	2.421
ProPEX LF Brass Ball Valve (full port), 3/4" PEX x 3/4" PEX	LFR4817575	0.945	1.13	1.621	3.348	0.531	0.447	4.976	2.153	1.339	3.02

Part name	Part no.	Cv	End Type 1	End Type 2	Weight per UOM [lbs/UOM]
ProPEX LF Brass Stop and Drain Ball Valve (full port), 1" PEX x 1" PEX	LFD4811010	25.2	ProPEX 1"	ProPEX 1"	0.78
ProPEX LF Brass Stop and Drain Ball Valve (full port), 1/2" PEX x 1/2" PEX	LFD4815050	5.7	ProPEX 1/2"	ProPEX 1/2"	0.3
ProPEX LF Brass Stop and Drain Ball Valve (full port), 3/4" PEX x 3/4" PEX	LFD4817575	11.1	ProPEX 3/4"	ProPEX 3/4"	0.45
ProPEX LF Brass Ball Valve (full port), 1" PEX x 1" PEX	LFR4811010	21.8	ProPEX 1"	ProPEX 1"	0.67
ProPEX LF Brass Ball Valve (full port), 1/2" PEX x 1/2" PEX	LFR4815050	4.6	ProPEX 1/2"	ProPEX 1/2"	0.26
ProPEX LF Brass Ball Valve (full port), 3/4" PEX x 3/4" PEX	LFR4817575	10.1	ProPEX 3/4"	ProPEX 3/4"	0.39

Part name	Part no.	Codes	Standards	Listings
Válvulas de bola residenciales de bronce sin plomo (LF) ProPEX	All	UPC IBC IRC IPC NPC of Canada UMC IMC	NSF/ANSI/CAN 372 ASTM F877 NSF/ANSI 359 ASTM F1960 CSA B137.5 NSF/ANSI/CAN 61 NSF/ANSI 14	cNSFus-pw-G U.P.Code

In addition, the following parts have additional codes, standards, or listings:

ProPEX LF Brass Stop and Drain Ball Valve (full port), 1/2" PEX x 1/2" PEX	LFD4815050
ProPEX LF Brass Stop and Drain Ball Valve (full port), 3/4" PEX x 3/4" PEX	LFD4817575
ProPEX LF Brass Ball Valve (full port), 1" PEX x 1" PEX	LFR4811010
ProPEX LF Brass Ball Valve (full port), 1/2" PEX x 1/2" PEX	LFR4815050

Installation	Related applications
<p>Install valve and stem extension kit according to local building code. Do not dismantle. Refer to the Uponor Piping Pocket Guide or the Uponor Plumbing Design Assistance Manual (PDAM) for additional information.</p>	<p>Hot water distribution  Hydronic heating and cooling systems  Hydronic Piping Systems  Hydronic Radiant Heating and Cooling Systems  PEX-a Plumbing Systems  Plumbing Systems  Pre-Insulated Pipe Systems  Radiant Heating and Cooling Systems</p>

Footnotes	Contact information	
-	<p>Uponor Inc.  5925 148th Street West  Apple Valley, MN 55124  T 800.321.4739  F 952.891.2008</p>	<p>Uponor Ltd.  6510 Kennedy Road  Mississauga, ON L5T 2X4  T 888.594.7726  F 800.638.9517</p>