

# Adaptadores de codos caídos de bronce sin plomo (LF) ProPEX



## Project Information

Job name:	Location:
Engineer:	Fecha de envío:
Contractor:	Presentada por:
Manufacturer's representative:	Approved by:

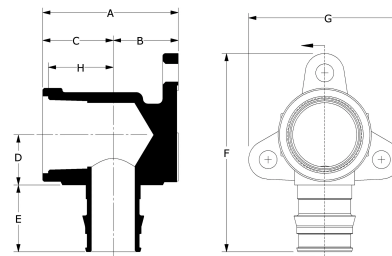
## Technical data

Material	LF Brass
Temp/pressure ratings	73 °F (23 °C) at 160 psi (11 bar) 180 °F (82 °C) at 100 psi (6.9 bar) 200 °F (93 °C) at 80 psi (5.5 bar)
Prop 65 label required?	Yes

## Product information and application use

Uponor offers the ProPEX® Lead-free Drop Ear Brass Elbow for use in hot and cold domestic potable water systems. One end of the adapter connects to female iron pipe (FIP) and the other end includes an Uponor ProPEX fitting for connections to Uponor AquaPEX® tubing.

Note: Temperature and pressure ratings stated are hydrostatic ratings. For domestic hot-water (DHW) and DHW recirculation installations, operating conditions should not exceed 140°F (60°C) at 80 psi (5.5 bar) in accordance with ASTM F2023. For additional information regarding application-specific temperature and pressure ratings, refer to the Uponor PEX Piping Systems Design and Installation Manual.



Part name	Part no.	A [Inch]	B [Inch]	C [Inch]	D [Inch]	E [Inch]	F [Inch]	G [Inch]	H [Inch]	End Type 1	End Type 2
ProPEX LF Brass Drop Ear Elbow, 1/2" PEX x 3/8" FIP	LF4235038	1.696	0.653	1.043	0.531	0.709	2.203	1.926	0.939	ProPEX 1/2"	FNPT 3/8"
ProPEX LF Brass Drop Ear Elbow, 1/2" PEX x 1/2" FIP	LF4235050	1.696	0.653	1.043	0.531	0.709	2.203	1.926	0.934	ProPEX 1/2"	FNPT 1/2"
ProPEX LF Brass Drop Ear Elbow, 3/4" PEX x 3/4" FIP	LF4237575	1.92	0.92	1	0.71	0.945	2.805	2.154	0.9	ProPEX 3/4"	FNPT 3/4"
ProPEX LF Brass Drop Ear Elbow, 1" PEX x 1" FIP	LF4231010	2.45	1.1	1.35	0.85	1.181	3.326	2.481	1.245	ProPEX 1"	FNPT 1"

Part name	Part no.	Weight per UOM [lbs/UOM]
ProPEX LF Brass Drop Ear Elbow, 1/2" PEX x 3/8" FIP	LF4235038	0.27
ProPEX LF Brass Drop Ear Elbow, 1/2" PEX x 1/2" FIP	LF4235050	0.2
ProPEX LF Brass Drop Ear Elbow, 3/4" PEX x 3/4" FIP	LF4237575	0.47
ProPEX LF Brass Drop Ear Elbow, 1" PEX x 1" FIP	LF4231010	0.87

Part name	Part no.	Codes	Standards	Listings
Adaptadores de codos caídos de bronce sin plomo (LF) ProPEX	All	UPC IBC IRC IPC NPC of Canada UMC NSPC IMC	ASTM F877 NSF/ANSI/CAN 372 ASTM F1960 CSA B137.5 NSF/ANSI/CAN 61 NSF/ANSI 14	ICC-ES-PMG cNSFus-pw-G U.P.Code

In addition, the following parts have additional codes, standards, or listings:

ProPEX LF Brass Drop Ear Elbow, 3/4" PEX x 3/4" FIP	LF4237575
---	-----------

## Installation

A ProPEX Ring is required for making ProPEX connections. Use the appropriate ProPEX Ring for tubing. For more information, refer to the Uponor Professional Plumbing Installation Guide.

## Related applications

PEX-a Plumbing Systems

## Footnotes

## Contact information

Uponor Inc.  
5925 148th Street West  
Apple Valley, MN 55124  
T 800.321.4739  
F 952.891.2008

Uponor Ltd.  
6510 Kennedy Road  
Mississauga, ON L5T 2X4  
T 888.594.7726  
F 800.638.9517