

Soportes de curvatura de metal

Project Information

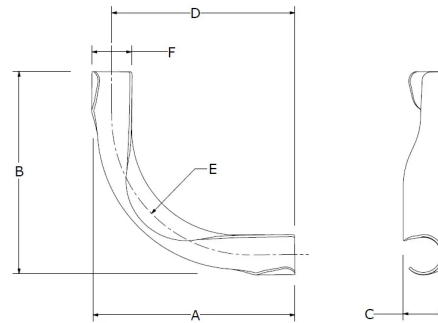
Job name:	Location:
Engineer:	Fecha de envío:
Contractor:	Presentada por:
Manufacturer's representative:	Approved by:

Technical data

Material Metal

Product information and application use

Snap the tubing into the Metal Bend Support at the beginning of the bend. Continue the bend through the support and snap the tubing into the support at the end of the bend. Refer to the Uponor AquaPEX® Professional Plumbing Installation Guide or the Uponor Radiant Floor Heating Installation Handbook for additional information.



Part name	Part no.	A [inch]	B [inch]	C [inch]	D [inch]	E [inch]	F [inch]	Subcomponent Material	Weight per UOM [lbs/UOM]
3/8" Metal Bend Support	A511037 5	3.176	3.176	0.63	2.857	1.811	0.64	SPHC steel	0.04
1/2" Metal Bend Support	A511050 0	3.583	3.583	0.807	3.169	2.352	0.827	-	0.1
5/8" Metal Bend Support	A511062 5	4.98	4.98	0.984	4.488	3.079	1.033	-	0.16
3/4" Metal Bend Support	A511075 0	6.43	6.43	1.181	5.827	5.276	1.177	-	0.32

Installation

Snap the pipe into the metal bend support at the beginning of the bend. Continue the bend through the support, and snap the pipe into the support at the end of the bend. Refer to the Uponor Piping Systems Installation Guide or the Uponor Radiant Floor Heating Installation Handbook for additional information.

Related applications

- PEX-a Plumbing Systems
- Radiant Heating and Cooling Systems
- AquaSAFE™ Fire Safety Systems
- Hydronic Piping Systems

Footnotes

-

Contact information

Uponor Inc.
5925 148th Street West
Apple Valley, MN 55124
T 800.321.4739
F 952.891.2008

Uponor Ltd.
6510 Kennedy Road
Mississauga, ON L5T 2X4
T 888.594.7726
F 800.638.9517