

Waters Edge



Involucración Uponor



0

Waters Edge

The Watersedge development in Weymouth offers all the mod conveniences such as contemporary kitchens and granite work surfaces.

Datos del proyecto:

Location

Weymouth, United Kingdom

Finalización

2008

Tipo de edificio

Vivienda unifamiliar

Product systems

Climatización Invisible

Tipo de proyecto

Obra nueva

Colaboradores

architect

Oakenhead estates

installer

[UFH NOW](#)

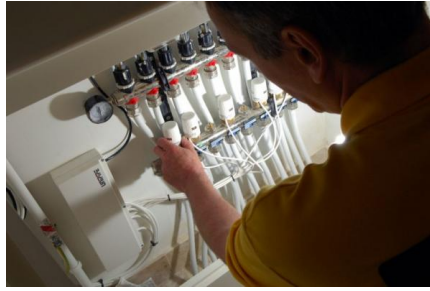
Limited space and escalating property prices has led developers to start to look upwards to make the best use of space. 'High rise' developments in most cases aim to get the best quality through compact living, often incorporating a number of new technologies to get the most from limited space available. The Watersedge development in Weymouth offers all the mod conveniences such as contemporary kitchens and granite work surfaces and even in some developments a garden. Adding to the overall luxury feel of the apartment underfloor heating was added to provide the occupants with the utmost of comfort. Natural choice for the project was market leader in underfloor heating Uponor Ltd.

Making the most of distribution outlets Uponor used Ferndown Company UFH Now to aid in the quotation, design, supply and installation on the project. The popularity of UFH is now giving life to a number of specialist companies undertaking jobs that in the past may have only been carried out by willing plumbers. Fully trained in providing quotations using Uponor's 'pro-quote' system; installation time is significantly reduced and expertise of the installer is increased.

16mm Multi Layer Composite Pipe has all the advantages you come to expect from all the Uponor MLC piping systems; a 100% oxygen tight pipe construction, form stable yet flexible plumbing technology (pipe memory), limited expansion characteristics (similar to copper pipe) and lastly a smooth internal bore (which eliminates scale build up on the internal surface of the pipe). Multi layer is similarly at home in plumbing applications as well as underfloor; as Uponor offer sizes from 12mm to 110mm in diameter, all sharing the unique pressfit jointing system that requires no hotwork and only takes 6 seconds to complete.

Waters Edge





uponor

Uponor Hispania, S.A.U

Avda. Leonardo da Vinci 15-17-19
Parque Empresarial La Carpetania
28906 Getafe (Madrid)
Spain

Teléfono +34 91 685 36 00
Email servicioalcliente@uponor.com
W www.uponor.com