

# ChlorFIT Reducer Bushing

## Project Information

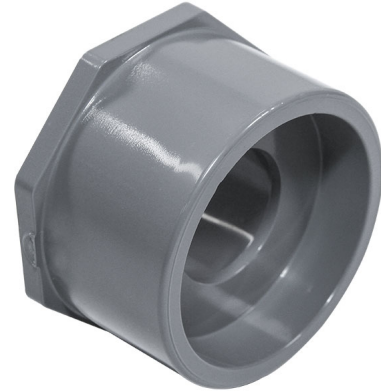
|                                |                 |
|--------------------------------|-----------------|
| Job name:                      | Location:       |
| Engineer:                      | Date submitted: |
| Contractor:                    | Submitted by:   |
| Manufacturer's representative: | Approved by:    |

## Technical data

Material CPVC

## Product information and application use

Use Uponor ChlorFIT® Schedule 80 Corzan® CPVC Reducer Bushings in hot and cold potable-water systems as well as hydronic heating and cooling applications.



| Part name   | Part no. | A [Inch] | B [Inch] | C [Inch] | D [Inch] | E [Inch] | F [Inch] | G [Inch] | H [Inch] | I [Inch] | End Type 1    |
|---|----------|----------|----------|----------|----------|----------|----------|----------|----------|----------|---------------|
| 3/4" x 1/2" CPVC 80 Reducing Bushing, Flush Style (SpgxS)     | 9837101  | 1.363    | 1.281    | 1.05     | 0.42     | 0.265    | 0.356    | 0.306    | 0.31     | 0.093    | Spigot 3/4"   |
| 1" x 1/2" CPVC 80 Reducing Bushing, Flush Style (SpgxS)       | 9837130  | 1.732    | 1.13     | 1.315    | 0.42     | 0.265    | 0.472    | 0.128    | 0.313    | 0.12     | Spigot 1"     |
| 1" x 3/4" CPVC 80 Reducing Bushing, Flush Style (SpgxS)       | 9837131  | 1.732    | 1.13     | 1.315    | 0.525    | 0.265    | 0.472    | 0.002    | 0.418    | 0.12     | Spigot 1"     |
| 1-1/4" x 1/2" CPVC 80 Reducing Bushing, Flush Style (SpgxS)   | 9837166  | 2.026    | 1.563    | 1.66     | 0.42     | 0.288    | 0.631    | 0.496    | 0.311    | 0.178    | Spigot 1-1/4" |
| 1-1/4" x 3/4" CPVC 80 Reducing Bushing, Flush Style (SpgxS)   | 9837167  | 2.183    | 1.53     | 1.66     | 0.525    | 0.28     | 0.639    | 0.402    | 0.412    | 0.12     | Spigot 1-1/4" |
| 1-1/4" x 1" CPVC 80 Reducing Bushing, Flush Style (SpgxS)     | 9837168  | 2.183    | 1.531    | 1.66     | 0.657    | 0.28     | 0.64     | 0.278    | 0.524    | 0.12     | Spigot 1-1/4" |
| 1-1/2" x 1/2" CPVC 80 Reducing Bushing, Flush Style (SpgxS)   | 9837209  | 2.413    | 1.656    | 1.9      | 0.311    | 0.28     | 0.75     | 0.654    | 0.311    | 1.002    | Spigot 1-1/2" |
| 1-1/2" x 3/4" CPVC 80 Reducing Bushing, Flush Style (SpgxS)   | 9837210  | 2.413    | 1.665    | 1.9      | 0.525    | 0.28     | 0.743    | 0.537    | 0.412    | 0.12     | Spigot 1-1/2" |
| 1-1/2" x 1" CPVC 80 Reducing Bushing, Flush Style (SpgxS)     | 9837211  | 2.465    | 1.665    | 1.9      | 0.657    | 0.28     | 0.743    | 0.412    | 0.525    | 0.12     | Spigot 1-1/2" |
| 1-1/2" x 1-1/4" CPVC 80 Reducing Bushing, Flush Style (SpgxS) | 9837212  | 2.442    | 1.67     | 1.9      | 0.83     | 0.28     | 0.75     | 0.292    | 0.69     | 0.12     | Spigot 1-1/2" |
| 2" x 1/2" CPVC 80 Reducing Bushing, Flush Style (SpgxS)       | 9837247  | 2.979    | 1.78     | 2.375    | 0.42     | 0.28     | 0.97     | 0.778    | 0.311    | 0.12     | Spigot 2"     |
| 2" x 3/4" CPVC 80 Reducing Bushing, Flush Style (SpgxS)       | 9837248  | 2.956    | 1.781    | 2.375    | 0.525    | 0.28     | 0.97     | 0.653    | 0.412    | 0.12     | Spigot 2"     |
| 2" x 1" CPVC 80 Reducing Bushing, Flush Style (SpgxS)         | 9837249  | 2.956    | 1.781    | 2.375    | 0.657    | 0.28     | 0.97     | 0.528    | 0.524    | 0.12     | Spigot 2"     |
| 2" x 1-1/4" CPVC 80 Reducing Bushing, Flush Style (SpgxS)     | 9837250  | 2.979    | 1.8      | 2.375    | 0.83     | 0.28     | 0.97     | 0.422    | 0.69     | 0.12     | Spigot 2"     |
| 2" x 1-1/2" CPVC 80 Reducing Bushing, Flush Style (SpgxS)     | 9837251  | 2.956    | 1.78     | 2.375    | 0.95     | 0.28     | 0.97     | 0.277    | 0.738    | 0.12     | Spigot 2"     |
| 2-1/2" x 1-1/2" CPVC 80 Reducing Bushing, Flush Style (SpgxS) | 9837291  | 3.533    | 2.2      | 2.875    | 0.95     | 0.37     | 1.148    | 0.697    | 0.785    | 0.12     | Spigot 2-1/2" |
| 2-1/2" x 2" CPVC 80 Reducing Bushing, Flush Style (SpgxS)     | 9837292  | 3.533    | 2.078    | 2.875    | 1.188    | 0.25     | 1.23     | 0.369    | 1.01     | 0.2      | Spigot 2-1/2" |
| 3" x 1" CPVC 80 Reducing Bushing, Flush Style (SpgxS)         | 9837335  | 4.272    | 2.415    | 3.5      | 0.657    | 0.457    | 1.436    | 1.078    | 0.487    | 0.195    | Spigot 3"     |
| 3" x 1-1/2" CPVC 80 Reducing Bushing, Flush Style (SpgxS)     | 9837337  | 4.261    | 2.4      | 3.5      | 0.95     | 0.45     | 1.435    | 0.817    | 0.815    | 0.2      | Spigot 3"     |
| 3" x 2" CPVC 80 Reducing Bushing, Flush Style                 | 9837338  | 4.261    | 2.4      | 3.5      | 1.188    | 0.38     | 1.435    | 0.691    | 1.01     | 0.2      | Spigot        |

|   |           |        |       |       |       |       |       |       |       |       |  |           |
|---|-----------|--------|-------|-------|-------|-------|-------|-------|-------|-------|--|-----------|
| (SpgxS)   |           |        |       |       |       |       |       |       |       |       |  | 3"        |
| 3" x 2-1/2" CPVC 80 Reducing Bushing, Flush Style (SpgxS)             | 9837339   | 4.261  | 2.313 | 3.5   | 1.438 | 0.38  | 1.54  | 0.323 | 1.2   | 0.2   |  | Spigot 3" |
| 4" x 2" CPVC 80 Reducing Bushing, Flush Style (SpgxS)                 | 9837420   | 5.485  | 2.708 | 4.5   | 1.188 | 0.38  | 1.895 | 0.949 | 1     | 0.25  |  | Spigot 4" |
| 4" x 2-1/2" CPVC 80 Reducing Bushing, Flush Style (SpgxS), Bushed     | 9837421FB | 5.626  | 3.043 | 4.5   | 1.437 | 0.684 | 1.81  | 0.517 | 1.654 | 0.633 |  | Spigot 4" |
| 4" x 3" CPVC 80 Reducing Bushing, Flush Style (SpgxS)                 | 9837422   | 5.485  | 2.688 | 4.5   | 1.75  | 0.38  | 1.99  | 0.548 | 1.5   | 0.25  |  | Spigot 4" |
| 6" x 2-1/2" CPVC 80 Reducing Bushing, Flush Style (SpgxS), Bushed     | 9837529FB | 8.011  | 3.957 | 6.625 | 1.437 | 0.816 | 2.848 | 1.459 | 1.558 | 0.605 |  | Spigot 6" |
| 6" x 3" CPVC 80 Reducing Bushing, Flush Style (SpgxS)                 | 9837530   | 7.944  | 3.59  | 6.625 | 1.75  | 0.496 | 2.89  | 1.45  | 1.56  | 0.25  |  | Spigot 6" |
| 6" x 4" CPVC 80 Reducing Bushing, Flush Style (SpgxS)                 | 9837532   | 7.944  | 3.59  | 6.625 | 2.25  | 0.496 | 2.89  | 1.07  | 2     | 0.25  |  | Spigot 6" |
| 8" x 4" CPVC 80 Reducing Bushing, Flush Style (SpgxS), Bushed, 2 Step | 9837582FB | 10.476 | 5.357 | 8.625 | 2.25  | 1.261 | 3.702 | 1.178 | 3.054 | 1.933 |  | Spigot 8" |
| 8" x 6" CPVC 80 Reducing Bushing, Flush Style (SpgxS)                 | 9837585   | 10.254 | 4.66  | 8.625 | 3.313 | 0.56  | 3.78  | 1.26  | 3.125 | 0.38  |  | Spigot 8" |

| Part name   | Part no.  | End Type 2    | Operating Temperature 1 [°F]     | Operating Temperature 2 [°F]      | Weight per UOM [lbs/UOM] |
|---|-----------|---------------|----------------------------------|-----------------------------------|--------------------------|
| 3/4" x 1/2" CPVC 80 Reducing Bushing, Flush Style (SpgxS)         | 9837101   | Socket 1/2"   | 73 °F (23 °C) at 690 psi (23 °C) | 180 °F (82 °C) at 170 psi (82 °C) | 0.03                     |
| 1" x 1/2" CPVC 80 Reducing Bushing, Flush Style (SpgxS)           | 9837130   | Socket 1/2"   | 73 °F (23 °C) at 630 psi (23 °C) | 180 °F (82 °C) at 155 psi (82 °C) | 0.07                     |
| 1" x 3/4" CPVC 80 Reducing Bushing, Flush Style (SpgxS)           | 9837131   | Socket 3/4"   | 73 °F (23 °C) at 630 psi (23 °C) | 180 °F (82 °C) at 155 psi (82 °C) | 0.05                     |
| 1-1/4" x 1/2" CPVC 80 Reducing Bushing, Flush Style (SpgxS)       | 9837166   | Socket 1/2"   | 73 °F (23 °C) at 520 psi (23 °C) | 180 °F (82 °C) at 130 psi (82 °C) | 0.11                     |
| 1-1/4" x 3/4" CPVC 80 Reducing Bushing, Flush Style (SpgxS)       | 9837167   | Socket 3/4"   | 73 °F (23 °C) at 520 psi (23 °C) | 180 °F (82 °C) at 130 psi (82 °C) | 0.11                     |
| 1-1/4" x 1" CPVC 80 Reducing Bushing, Flush Style (SpgxS)         | 9837168   | Socket 1"     | 73 °F (23 °C) at 520 psi (23 °C) | 180 °F (82 °C) at 130 psi (82 °C) | 0.11                     |
| 1-1/2" x 1/2" CPVC 80 Reducing Bushing, Flush Style (SpgxS)       | 9837209   | Socket 1/2"   | 73 °F (23 °C) at 470 psi (23 °C) | 180 °F (82 °C) at 115 psi (82 °C) | 0.16                     |
| 1-1/2" x 3/4" CPVC 80 Reducing Bushing, Flush Style (SpgxS)       | 9837210   | Socket 3/4"   | 73 °F (23 °C) at 470 psi (23 °C) | 180 °F (82 °C) at 115 psi (82 °C) | 0.17                     |
| 1-1/2" x 1" CPVC 80 Reducing Bushing, Flush Style (SpgxS)         | 9837211   | Socket 1"     | 73 °F (23 °C) at 470 psi (23 °C) | 180 °F (82 °C) at 115 psi (82 °C) | 0.14                     |
| 1-1/2" x 1-1/4" CPVC 80 Reducing Bushing, Flush Style (SpgxS)     | 9837212   | Socket 1-1/4" | 73 °F (23 °C) at 470 psi (23 °C) | 180 °F (82 °C) at 115 psi (82 °C) | 0.09                     |
| 2" x 1/2" CPVC 80 Reducing Bushing, Flush Style (SpgxS)           | 9837247   | Socket 1/2"   | 73 °F (23 °C) at 400 psi (23 °C) | 180 °F (82 °C) at 100 psi (82 °C) | 0.23                     |
| 2" x 3/4" CPVC 80 Reducing Bushing, Flush Style (SpgxS)           | 9837248   | Socket 3/4"   | 73 °F (23 °C) at 400 psi (23 °C) | 180 °F (82 °C) at 100 psi (82 °C) | 0.24                     |
| 2" x 1" CPVC 80 Reducing Bushing, Flush Style (SpgxS)             | 9837249   | Socket 1"     | 73 °F (23 °C) at 400 psi (23 °C) | 180 °F (82 °C) at 100 psi (82 °C) | 0.24                     |
| 2" x 1-1/4" CPVC 80 Reducing Bushing, Flush Style (SpgxS)         | 9837250   | Socket 1-1/4" | 73 °F (23 °C) at 400 psi (23 °C) | 180 °F (82 °C) at 100 psi (82 °C) | 0.22                     |
| 2" x 1-1/2" CPVC 80 Reducing Bushing, Flush Style (SpgxS)         | 9837251   | Socket 1-1/2" | 73 °F (23 °C) at 400 psi (23 °C) | 180 °F (82 °C) at 100 psi (82 °C) | 0.18                     |
| 2-1/2" x 1-1/2" CPVC 80 Reducing Bushing, Flush Style (SpgxS)     | 9837291   | Socket 1-1/2" | 73 °F (23 °C) at 420 psi (23 °C) | 180 °F (82 °C) at 105 psi (82 °C) | 0.39                     |
| 2-1/2" x 2" CPVC 80 Reducing Bushing, Flush Style (SpgxS)         | 9837292   | Socket 2"     | 73 °F (23 °C) at 420 psi (23 °C) | 180 °F (82 °C) at 105 psi (82 °C) | 0.26                     |
| 3" x 1" CPVC 80 Reducing Bushing, Flush Style (SpgxS)             | 9837335   | Socket 1"     | 73 °F (23 °C) at 370 psi (23 °C) | 180 °F (82 °C) at 90 psi (82 °C)  | 1.03                     |
| 3" x 1-1/2" CPVC 80 Reducing Bushing, Flush Style (SpgxS)         | 9837337   | Socket 1-1/2" | 73 °F (23 °C) at 370 psi (23 °C) | 180 °F (82 °C) at 90 psi (82 °C)  | 0.74                     |
| 3" x 2" CPVC 80 Reducing Bushing, Flush Style (SpgxS)             | 9837338   | Socket 2"     | 73 °F (23 °C) at 370 psi (23 °C) | 180 °F (82 °C) at 90 psi (82 °C)  | 0.79                     |
| 3" x 2-1/2" CPVC 80 Reducing Bushing, Flush Style (SpgxS)         | 9837339   | Socket 2-1/2" | 73 °F (23 °C) at 370 psi (23 °C) | 180 °F (82 °C) at 90 psi (82 °C)  | 0.51                     |
| 4" x 2" CPVC 80 Reducing Bushing, Flush Style (SpgxS)             | 9837420   | Socket 2"     | 73 °F (23 °C) at 320 psi (23 °C) | 180 °F (82 °C) at 80 psi (82 °C)  | 1.26                     |
| 4" x 2-1/2" CPVC 80 Reducing Bushing, Flush Style (SpgxS), Bushed | 9837421FB | Socket 2-1/2" | 73 °F (23 °C) at 320 psi (23 °C) | 180 °F (82 °C) at 80 psi (82 °C)  | 1.44                     |

|   |           |               |                                  |                                  |      |
|---|-----------|---------------|----------------------------------|----------------------------------|------|
| 4" x 3" CPVC 80 Reducing Bushing, Flush Style (SpgxS)                 | 9837422   | Socket 3"     | 73 °F (23 °C) at 320 psi (23 °C) | 180 °F (82 °C) at 80 psi (82 °C) | 0.93 |
| 6" x 2-1/2" CPVC 80 Reducing Bushing, Flush Style (SpgxS), Bushed     | 9837529FB | Socket 2-1/2" | 73 °F (23 °C) at 280 psi (23 °C) | 180 °F (82 °C) at 70 psi (82 °C) | 3.99 |
| 6" x 3" CPVC 80 Reducing Bushing, Flush Style (SpgxS)                 | 9837530   | Socket 3"     | 73 °F (23 °C) at 280 psi (23 °C) | 180 °F (82 °C) at 70 psi (82 °C) | 3.48 |
| 6" x 4" CPVC 80 Reducing Bushing, Flush Style (SpgxS)                 | 9837532   | Socket 4"     | 73 °F (23 °C) at 280 psi (23 °C) | 180 °F (82 °C) at 70 psi (82 °C) | 3.92 |
| 8" x 4" CPVC 80 Reducing Bushing, Flush Style (SpgxS), Bushed, 2 Step | 9837582FB | Socket 4"     | 73 °F (23 °C) at 250 psi (23 °C) | 180 °F (82 °C) at 60 psi (82 °C) | 8.57 |
| 8" x 6" CPVC 80 Reducing Bushing, Flush Style (SpgxS)                 | 9837585   | Socket 6"     | 73 °F (23 °C) at 250 psi (23 °C) | 180 °F (82 °C) at 60 psi (82 °C) | 4.59 |

| Part name   | Part no.  | Codes                        | Standards                             | Listings                   |
|---|-----------|------------------------------|---------------------------------------|----------------------------|
| ChlorFIT Reducer Bushing  | All       | UPC IBC IRC IPC UMC NSPC IMC | ASTM F439 NSF/ANSI/CAN 61 NSF/ANSI 14 | ULC NSFpw-G IAPMO U.P.Code |
| In addition, the following parts have additional codes, standards, or listings: |           |                              |                                       |                            |
| 3/4" x 1/2" CPVC 80 Reducing Bushing, Flush Style (SpgxS)                       | 9837101   |                              |                                       | ICC-ES-PMG                 |
| 1" x 1/2" CPVC 80 Reducing Bushing, Flush Style (SpgxS)                         | 9837130   |                              |                                       | ICC-ES-PMG                 |
| 1" x 3/4" CPVC 80 Reducing Bushing, Flush Style (SpgxS)                         | 9837131   |                              |                                       | ICC-ES-PMG                 |
| 1-1/4" x 1/2" CPVC 80 Reducing Bushing, Flush Style (SpgxS)                     | 9837166   |                              |                                       | ICC-ES-PMG                 |
| 1-1/4" x 3/4" CPVC 80 Reducing Bushing, Flush Style (SpgxS)                     | 9837167   |                              |                                       | ICC-ES-PMG                 |
| 1-1/4" x 1" CPVC 80 Reducing Bushing, Flush Style (SpgxS)                       | 9837168   |                              |                                       | ICC-ES-PMG                 |
| 1-1/2" x 1/2" CPVC 80 Reducing Bushing, Flush Style (SpgxS)                     | 9837209   |                              |                                       | ICC-ES-PMG                 |
| 1-1/2" x 3/4" CPVC 80 Reducing Bushing, Flush Style (SpgxS)                     | 9837210   |                              |                                       | ICC-ES-PMG                 |
| 1-1/2" x 1" CPVC 80 Reducing Bushing, Flush Style (SpgxS)                       | 9837211   |                              |                                       | ICC-ES-PMG                 |
| 1-1/2" x 1-1/4" CPVC 80 Reducing Bushing, Flush Style (SpgxS)                   | 9837212   |                              |                                       | ICC-ES-PMG                 |
| 2" x 1/2" CPVC 80 Reducing Bushing, Flush Style (SpgxS)                         | 9837247   |                              |                                       | ICC-ES-PMG                 |
| 2" x 3/4" CPVC 80 Reducing Bushing, Flush Style (SpgxS)                         | 9837248   |                              |                                       | ICC-ES-PMG                 |
| 2" x 1" CPVC 80 Reducing Bushing, Flush Style (SpgxS)                           | 9837249   |                              |                                       | ICC-ES-PMG                 |
| 2" x 1-1/4" CPVC 80 Reducing Bushing, Flush Style (SpgxS)                       | 9837250   |                              |                                       | ICC-ES-PMG                 |
| 2" x 1-1/2" CPVC 80 Reducing Bushing, Flush Style (SpgxS)                       | 9837251   |                              |                                       | ICC-ES-PMG                 |
| 2-1/2" x 1-1/2" CPVC 80 Reducing Bushing, Flush Style (SpgxS)                   | 9837291   |                              |                                       | ICC-ES-PMG                 |
| 2-1/2" x 2" CPVC 80 Reducing Bushing, Flush Style (SpgxS)                       | 9837292   |                              |                                       | ICC-ES-PMG                 |
| 3" x 1" CPVC 80 Reducing Bushing, Flush Style (SpgxS)                           | 9837335   |                              |                                       | ICC-ES-PMG                 |
| 3" x 1-1/2" CPVC 80 Reducing Bushing, Flush Style (SpgxS)                       | 9837337   |                              |                                       | ICC-ES-PMG                 |
| 3" x 2" CPVC 80 Reducing Bushing, Flush Style (SpgxS)                           | 9837338   |                              |                                       | ICC-ES-PMG                 |
| 3" x 2-1/2" CPVC 80 Reducing Bushing, Flush Style (SpgxS)                       | 9837339   |                              |                                       | ICC-ES-PMG                 |
| 4" x 2" CPVC 80 Reducing Bushing, Flush Style (SpgxS)                           | 9837420   |                              |                                       | ICC-ES-PMG                 |
| 4" x 2-1/2" CPVC 80 Reducing Bushing, Flush Style (SpgxS), Bushed               | 9837421FB |                              |                                       | ICC-ES-PMG                 |
| 4" x 3" CPVC 80 Reducing Bushing, Flush Style (SpgxS)                           | 9837422   |                              |                                       | ICC-ES-PMG                 |
| 6" x 2-1/2" CPVC 80 Reducing Bushing, Flush Style (SpgxS), Bushed               | 9837529FB |                              |                                       | ICC-ES-PMG                 |
| 6" x 3" CPVC 80 Reducing Bushing, Flush Style (SpgxS)                           | 9837530   |                              |                                       | ICC-ES-PMG                 |
| 6" x 4" CPVC 80 Reducing Bushing, Flush Style (SpgxS)                           | 9837532   |                              |                                       | ICC-ES-PMG                 |

| Installation  | Related applications              |
|---|-----------------------------------|
| Make connections via solvent welding using primer and solvent cement designed specifically for Schedule 80 CPVC pipe and fittings. Refer to the Uponor ChlorFIT Manual or Uponor ChlorFIT Solvent Welding Instruction Sheet for complete details. | Domestic water<br>Hydronic piping |

Uponor Inc.  
5925 148th Street West  
Apple Valley, MN 55124  
T 800.321.4739  
F 952.891.2008

Uponor Ltd.  
6510 Kennedy Road  
Mississauga, ON L5T 2X4  
T 888.594.7726  
F 800.638.9517

---