

Uponor PP-RCT LF transition saddles, female NPT (outlet fusion)



Project Information

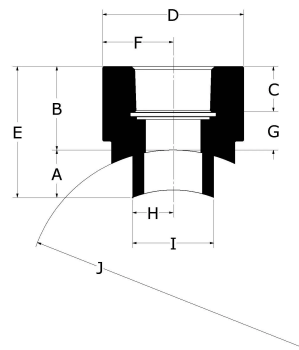
Job name:	Location:
Engineer:	Date submitted:
Contractor:	Submitted by:
Manufacturer's representative:	Approved by:

Technical data

Material	PP-RCT
Temp/pressure ratings	73 °F (23 °C) at 340 psi (23.44 bar) 140 °F (60 °C) at 190 psi (13.1 bar) 180 °F (82 °C) at 100 psi (6.9 bar)
Prop 65 label required?	Yes

Product information and application use

Use Uponor Lead-Free (LF) Female NPT Transition Saddles for outlet-fusion connections to Uponor PP-RCT Mechanical Pipe to convey fluid for hydronic heating and cooling or industrial applications and for outlet-fusion connections to Uponor PP-RCT Potable Pipe to convey water for potable plumbing applications.



Part name	Part no.	A [inch]	B [inch]	C [inch]	D [inch]	E [inch]	F [inch]	G [inch]	H [inch]	I [inch]	J [inch]
Uponor PP-RCT LF Transition Saddle, 10" x 1", Female NPT, for Outlet Fusion	PR57910010	1.151	1.114	0.683	2.362	2.265	1.181	0.433	0.63	1.26	9.843
Uponor PP-RCT LF Transition Saddle, 10" x 1/2", Female NPT, for Outlet Fusion	PR57910050	1.13	1.039	0.54	1.614	2.17	0.807	0.499	0.492	0.984	9.843
Uponor PP-RCT LF Transition Saddle, 10" x 3/4", Female NPT, for Outlet Fusion	PR57910075	1.13	1.043	0.546	1.811	2.174	0.906	0.498	0.492	0.984	9.843
Uponor PP-RCT LF Transition Saddle, 1 1/2" x 1/2", Female NPT, for Outlet Fusion	PR5791550	0.4	0.913	0.54	1.496	1.313	0.748	0.374	0.492	0.984	1.969
Uponor PP-RCT LF Transition Saddle, 1 1/2" x 3/4", Female NPT, for Outlet Fusion	PR5791575	0.451	1.012	0.546	1.713	1.463	0.856	0.466	0.492	0.984	1.969
Uponor PP-RCT LF Transition Saddle, 2" x 1/2", Female NPT, for Outlet Fusion	PR5792050	0.415	0.913	0.54	1.496	1.329	0.748	0.374	0.492	0.984	2.48
Uponor PP-RCT LF Transition Saddle, 2" x 3/4", Female NPT, for Outlet Fusion	PR5792075	0.415	1.012	0.546	1.713	1.427	0.856	0.466	0.492	0.984	2.48
Uponor PP-RCT LF Transition Saddle, 2 1/2" x 1", Female NPT, for Outlet Fusion	PR5792510	0.519	1.102	0.683	2.362	1.622	1.181	0.42	0.63	1.26	2.953
Uponor PP-RCT LF Transition Saddle, 2 1/2" x 1/2", Female NPT, for Outlet Fusion	PR5792550	0.442	0.913	0.54	1.496	1.355	0.748	0.374	0.492	0.984	2.953
Uponor PP-RCT LF Transition Saddle, 2 1/2" x 3/4", Female NPT, for Outlet Fusion	PR5792575	0.519	1.012	0.546	1.713	1.53	0.856	0.466	0.492	0.984	2.953
Uponor PP-RCT LF Transition Saddle, 3" x 1", Female NPT, for Outlet Fusion	PR5793010	0.551	1.102	0.683	2.362	1.654	1.181	0.42	0.63	1.26	3.543
Uponor PP-RCT LF Transition Saddle, 3" x 1/2", Female NPT, for Outlet Fusion	PR5793050	0.489	0.913	0.54	1.496	1.402	0.748	0.374	0.492	0.984	3.543
Uponor PP-RCT LF Transition Saddle, 3" x 3/4", Female NPT, for Outlet Fusion	PR5793075	0.576	1.012	0.546	1.713	1.587	0.856	0.466	0.984	0.984	3.543
Uponor PP-RCT LF Transition Saddle, 4" x 1", Female NPT, for Outlet Fusion	PR5794010	0.658	1.102	0.683	2.362	1.761	1.181	0.42	0.63	1.26	4.921
Uponor PP-RCT LF Transition Saddle, 4" x 1/2", Female NPT, for Outlet Fusion	PR5794050	0.738	0.913	0.54	1.496	1.654	0.748	0.374	0.492	0.984	4.921
Uponor PP-RCT LF Transition Saddle, 4" x 3/4", Female NPT, for Outlet Fusion	PR5794075	0.738	1.012	0.546	1.713	1.75	0.856	0.466	0.492	0.984	4.921
Uponor PP-RCT LF Transition Saddle, 6" x 1", Female NPT, for Outlet Fusion	PR5796010	0.787	1.102	0.683	2.362	1.89	1.181	0.42	0.63	1.26	6.299
Uponor PP-RCT LF Transition Saddle, 6" x 1/2", Female NPT, for Outlet Fusion	PR5796050	0.755	0.913	0.54	1.496	1.668	0.748	0.374	0.492	0.984	6.299
Uponor PP-RCT LF Transition Saddle, 6" x 3/4", Female NPT, for Outlet Fusion	PR5796075	0.755	1.012	0.546	1.713	1.767	0.856	0.466	0.492	0.984	6.299
Uponor PP-RCT LF Transition Saddle, 8" x 1", Female NPT, for Outlet Fusion	PR5798010	0.949	1.102	0.681	2.362	2.051	1.181	0.421	0.63	1.26	7.874

Uponor PP-RCT LF Transition Saddle, 8" x 1/2", Female NPT, for Outlet Fusion	PR5798050	0.922	0.984	0.54	1.614	1.906	0.807	0.444	0.492	0.984	7.874
Uponor PP-RCT LF Transition Saddle, 8" x 3/4", Female NPT, for Outlet Fusion	PR5798075	0.922	1.004	0.546	1.811	1.926	0.906	0.458	0.492	0.984	7.874

Part name	Part no.	Equivalent length through [ft]	End Type 1	End Type 2	Weight per UOM [lbs/UOM]
Uponor PP-RCT LF Transition Saddle, 10" x 1", Female NPT, for Outlet Fusion	PR57910010	1.7	Saddle 10"	FNPT 1"	0.36
Uponor PP-RCT LF Transition Saddle, 10" x 1/2", Female NPT, for Outlet Fusion	PR57910050	1.1	Saddle 10"	FNPT 1/2"	0.14
Uponor PP-RCT LF Transition Saddle, 10" x 3/4", Female NPT, for Outlet Fusion	PR57910075	1.4	Saddle 10"	FNPT 3/4"	0.17
Uponor PP-RCT LF Transition Saddle, 1 1/2" x 1/2", Female NPT, for Outlet Fusion	PR5791550	1.1	Saddle 1-1/2"	FNPT 1/2"	0.12
Uponor PP-RCT LF Transition Saddle, 1 1/2" x 3/4", Female NPT, for Outlet Fusion	PR5791575	1.4	Saddle 1-1/2"	FNPT 3/4"	0.16
Uponor PP-RCT LF Transition Saddle, 2" x 1/2", Female NPT, for Outlet Fusion	PR5792050	1.1	Saddle 2"	FNPT 1/2"	0.12
Uponor PP-RCT LF Transition Saddle, 2" x 3/4", Female NPT, for Outlet Fusion	PR5792075	1.4	Saddle 2"	FNPT 3/4"	0.16
Uponor PP-RCT LF Transition Saddle, 2 1/2" x 1", Female NPT, for Outlet Fusion	PR5792510	1.7	Saddle 2-1/2"	FNPT 1"	0.34
Uponor PP-RCT LF Transition Saddle, 2 1/2" x 1/2", Female NPT, for Outlet Fusion	PR5792550	1.1	Saddle 2-1/2"	FNPT 1/2"	0.12
Uponor PP-RCT LF Transition Saddle, 2 1/2" x 3/4", Female NPT, for Outlet Fusion	PR5792575	1.4	Saddle 2-1/2"	FNPT 3/4"	0.16
Uponor PP-RCT LF Transition Saddle, 3" x 1", Female NPT, for Outlet Fusion	PR5793010	1.7	Saddle 3"	FNPT 1"	0.34
Uponor PP-RCT LF Transition Saddle, 3" x 1/2", Female NPT, for Outlet Fusion	PR5793050	1.1	Saddle 3"	FNPT 1/2"	0.12
Uponor PP-RCT LF Transition Saddle, 3" x 3/4", Female NPT, for Outlet Fusion	PR5793075	1.4	Saddle 3"	FNPT 3/4"	0.16
Uponor PP-RCT LF Transition Saddle, 4" x 1", Female NPT, for Outlet Fusion	PR5794010	1.7	Saddle 4"	FNPT 1"	0.34
Uponor PP-RCT LF Transition Saddle, 4" x 1/2", Female NPT, for Outlet Fusion	PR5794050	1.1	Saddle 4"	FNPT 1/2"	0.12
Uponor PP-RCT LF Transition Saddle, 4" x 3/4", Female NPT, for Outlet Fusion	PR5794075	1.4	Saddle 4"	FNPT 3/4"	0.16
Uponor PP-RCT LF Transition Saddle, 6" x 1", Female NPT, for Outlet Fusion	PR5796010	1.7	Saddle 6"	FNPT 1"	0.35
Uponor PP-RCT LF Transition Saddle, 6" x 1/2", Female NPT, for Outlet Fusion	PR5796050	1.1	Saddle 6"	FNPT 1/2"	0.12
Uponor PP-RCT LF Transition Saddle, 6" x 3/4", Female NPT, for Outlet Fusion	PR5796075	1.4	Saddle 6"	FNPT 3/4"	0.16
Uponor PP-RCT LF Transition Saddle, 8" x 1", Female NPT, for Outlet Fusion	PR5798010	1.7	Saddle 8"	FNPT 1"	0.36
Uponor PP-RCT LF Transition Saddle, 8" x 1/2", Female NPT, for Outlet Fusion	PR5798050	1.1	Saddle 8"	FNPT 1/2"	0.13
Uponor PP-RCT LF Transition Saddle, 8" x 3/4", Female NPT, for Outlet Fusion	PR5798075	1.4	Saddle 8"	FNPT 3/4"	0.17

Part name	Part no.	Codes	Standards	Listings
Uponor PP-RCT LF transition saddles, female NPT (outlet fusion)	All	UPC IRC NBC of Canada IPC UMC CMC CPC IMC	NSF/ANSI/CAN 61 ASTM E84 NSF/ANSI 14 ASTM F2389 CSA B137.11	ICC-ES-PMG 1106 IAPMO-R&T 8358 QAI P321-5 IAPMO K-12775

Installation	Related applications
-	Domestic water systems Hydronic heating and cooling systems Industrial

Footnotes	Contact information
-	Uponor Inc. 5925 148th Street West Apple Valley, MN 55124 T 800.321.4739 F 952.891.2008 Uponor Ltd. 6510 Kennedy Road Mississauga, ON L5T 2X4 T 888.594.7726 F 800.638.9517