

TotalFit female threaded adapters

Project Information

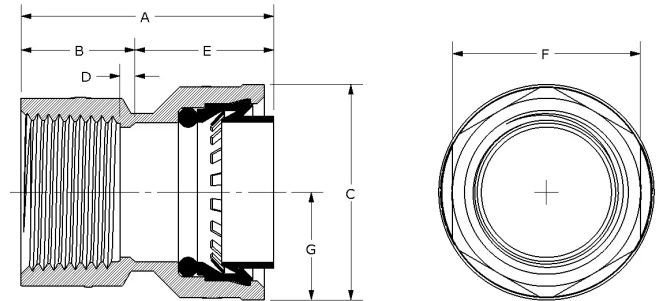
| | |
|--------------------------------|-----------------|
| Job name: | Location: |
| Engineer: | Date submitted: |
| Contractor: | Submitted by: |
| Manufacturer's representative: | Approved by: |

Technical data

| | |
|-------------------------|--|
| Material | Engineered Polymer |
| Temp/pressure ratings | 73 °F (23 °C) at 160 psi (11 bar) 180 °F (82 °C) at 100 psi (6.9 bar) 200 °F (93 °C) at 80 psi (5.5 bar) |
| Prop 65 label required? | No |

Product information and application use

TotalFit™ is the professional-grade engineered polymer (EP) push-to-connect solution that provides greater value for residential projects with the same versatility and speed as brass push-to-connect fittings for PEX, PE-RT, CPVC, and copper piping systems.



| Part name | Part no. | A [inch] | B [inch] | C [inch] | D [inch] | E [inch] | F [inch] | G [inch] | End Type 1 | End Type 2 | Weight per UOM [lbs/UOM] |
|---|-----------|----------|----------|----------|----------|----------|----------|----------|---------------|------------|--------------------------|
| TotalFit Female Threaded Adapter, 1" x 1" NPT | TF4571010 | 2.065 | 0.931 | 1.76 | 0.124 | 1.134 | 1.535 | 0.88 | TotalFit 1" | FNPT 1" | 0.08 |
| TotalFit Female Threaded Adapter, 1/2" x 1/2" NPT | TF4575050 | 1.642 | 0.728 | 1.244 | 0.059 | 0.913 | 1.102 | 0.565 | TotalFit 1/2" | FNPT 1/2" | 0.04 |
| TotalFit Female Threaded Adapter, 1/2" x 3/4" NPT | TF4575075 | 1.677 | 0.764 | 1.402 | 0.094 | 0.913 | 1.26 | 0.565 | TotalFit 1/2" | FNPT 3/4" | 0.04 |
| TotalFit Female Threaded Adapter, 3/4" x 1" NPT | TF4577510 | 1.957 | 0.89 | 1.713 | 0.102 | 1.067 | 1.535 | 0.728 | TotalFit 3/4" | FNPT 1" | 0.06 |
| TotalFit Female Threaded Adapter, 3/4" x 3/4" NPT | TF4577575 | 1.839 | 0.772 | 1.457 | 0.083 | 1.067 | 1.28 | 0.728 | TotalFit 3/4" | FNPT 3/4" | 0.06 |

| Part name | Part no. | Codes | Standards | Listings |
|-----------------------------------|----------|---|--|---|
| TotalFit female threaded adapters | All | UPC IRC IPC NPC of Canada UMC CMC CPC IMC | NSF/ANSI/CAN 372 ASTM F877 NSF/ANSI/CAN 61 NSF/ANSI 14 ASSE 1061 | IAPMO K-13573 IAPMO K-13571 IAPMO K-13572 |

In addition, the following parts have additional codes, standards, or listings:

| | |
|---|-----------|
| TotalFit Female Threaded Adapter, 1/2" x 3/4" NPT | TF4575075 |
| TotalFit Female Threaded Adapter, 3/4" x 1" NPT | TF4577510 |

Installation

Install on PEX, PE-RT, CPVC, and copper piping systems. Use deburr and depth tool to remove excess material or burrs and mark the appropriate depth on pipe. If using flexible PEX or PE-RT, install the insert inside the pipe first before making the connection. Only use PTFE thread seal tape (with a minimum of three wraps) to seal male and female adapters. Refer to the Uponor TotalFit Instruction Sheet for additional information.

Related applications

- Plumbing
- Hydronic Heating & Cooling

Footnotes

Contact information

Uponor Inc.
5925 148th Street West
Apple Valley, MN 55124
T 800.321.4739
F 952.891.2008

Uponor Ltd.
6510 Kennedy Road
Mississauga, ON L5T 2X4
T 888.594.7726
F 800.638.9517