

# ProPEX swivel faucet adapters

## Project information

Job name:	Location:
Engineer:	Date submitted:
Contractor:	Submitted by:
Manufacturer's representative:	Approved by:

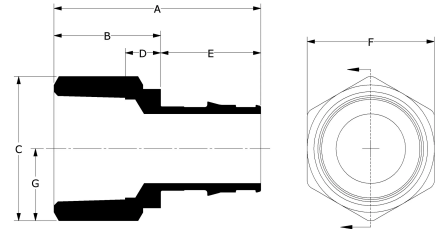
## Technical data

Material	Engineered Polymer
End type 1	ProPEX 1/2"
End type 2	NPSM 1/2"
Temp/pressure ratings	73 °F (23 °C) at 160 psi (11 bar) 180 °F (82 °C) at 100 psi (6.9 bar) 200 °F (93 °C) at 80 psi (5.5 bar)

## Product information and application use

The ProPEX® Engineered Plastic (EP) Swivel Faucet Adapter is available for use in hot and cold domestic potable water systems. One end is manufactured with the Uponor ProPEX Fitting for swivel connections to Uponor AquaPEX® tubing.

Note: Temperature and pressure ratings stated are hydrostatic ratings. For domestic hot-water (DHW) and DHW recirculation installations, operating conditions should not exceed 140°F (60°C) at 80 psi (5.5 bar) in accordance with ASTM F2023. For additional information regarding application-specific temperature and pressure ratings, refer to the Uponor PEX Piping Systems Design and Installation Manual.



Part name	Part no.	A [inch]	B [inch]	C [inch]	D [inch]	E [inch]	F [inch]	G [inch]	Weight per UOM [lbs/UOM]
ProPEX EP Swivel Faucet Adapter, 1/2" PEX x 1/2" NPSM	Q4360500	1.494	0.765	1.61	0.342	0.729	1.61	0.805	0.03

Part name	Part no.	Codes	Standards	Listings
ProPEX swivel faucet adapters	Q4360500	UPC IBC IRC IPC NPC of Canada UMC NSPC IMC	ASTM E814 ULC S115 ASTM F877 ASTM F1960 CSA B137.5 ULC S102.2 ASTM E119 UL 263 NSF/ANSI/CAN 61 ULC S101 NSF/ANSI 14	IAPMO-ES HUD MR 1269 ICC-ES-PMG cNSFus-pw U.P.Code cQALus P321

## Installation

Use the appropriate Uponor ProPEX Ring for the tubing. For more information, refer to the Uponor Professional Plumbing Installation Guide.

## Related applications

PEX-a Plumbing Systems

## Footnotes

-

## Contact information

Uponor Inc.  
5925 148th Street West  
Apple Valley, MN 55124  
T 800.321.4739  
F 952.891.2008

Uponor Ltd.  
6510 Kennedy Road  
Mississauga, ON L5T 2X4  
T 888.594.7726  
F 800.638.9517