

ProPEX lead-free (LF) brass female threaded adapters

Project Information

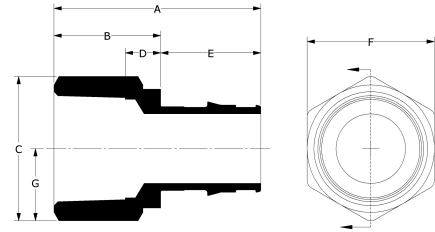
Job name:	Location:
Engineer:	Date submitted:
Contractor:	Submitted by:
Manufacturer's representative:	Approved by:

Technical data

Material	LF Brass
Temp/pressure ratings	73 °F (23 °C) at 160 psi (11 bar) 180 °F (82 °C) at 100 psi (6.9 bar) 200 °F (93 °C) at 80 psi (5.5 bar)
Prop 65 label required?	Yes

Product information and application use

The ProPEX® Lead-free Brass Female Threaded Adapter connects Uponor PEX-a tubing to female NPT threads. Use these fittings in hot and cold domestic potable water systems, residential fire sprinkler systems or hydronic radiant heating and cooling systems. One end of the adapter is manufactured with the Uponor ProPEX fitting for connections to Wirsbo hePEX™ tubing or Uponor AquaPEX® tubing. The other end of the adapter connects to copper. These adapters are safe for direct burial in soil.



Note: Temperature and pressure ratings stated are hydrostatic ratings. For domestic hot-water (DHW) and DHW recirculation installations, operating conditions should not exceed 140°F (60°C) at 80 psi (5.5 bar) in accordance with ASTM F2023. For additional information regarding application-specific temperature and pressure ratings, refer to the Uponor PEX Piping Systems Design and Installation Manual.

Part name	Part no.	A [inch]	B [inch]	C [inch]	D [inch]	E [inch]	F [inch]	G [inch]	End Type 1	End Type 2	Weight per UOM [lbs/UOM]
ProPEX LF Brass Female Threaded Adapter, 1/2" PEX x 3/4" NPT	LF4575075	1.629	0.92	1.371	0.367	0.709	1.187	0.685	ProPEX 1/2"	FNPT 3/4"	0.18
ProPEX LF Brass Female Threaded Adapter, 3/4" PEX x 3/4" NPT	LF4577575	1.865	0.92	1.371	0.366	0.945	1.187	0.685	ProPEX 3/4"	FNPT 3/4"	-
ProPEX LF Brass Female Threaded Adapter, 1" PEX x 1" NPT	LF4571010	2.441	1.26	1.732	0.419	1.181	1.5	0.866	ProPEX 1"	FNPT 1"	0.42
ProPEX LF Brass Female Threaded Adapter, 1 1/4" PEX x 1 1/4" NPT	LF4571313	2.565	1.12	2.309	0.413	1.445	2.0	1.155	ProPEX 1-1/4"	FNPT 1-1/4"	0.73
ProPEX LF Brass Female Threaded Adapter, 1/2" PEX x 1/2" NPT	LF4575050	1.569	0.86	1.155	0.325	0.709	1.0	0.577	ProPEX 1/2"	FNPT 1/2"	0.14
ProPEX LF Brass Female Threaded Adapter, 3/4" PEX x 1" NPT	LF4577510	2.205	1.26	1.732	0.599	0.945	1.5	0.866	ProPEX 3/4"	FNPT 1"	-
ProPEX LF Brass Female Threaded Adapter, 1 1/2" PEX x 1 1/2" NPT	LF4571515	2.864	1.16	2.598	0.436	1.704	2.25	1.299	ProPEX 1-1/2"	FNPT 1-1/2"	0.95
ProPEX LF Brass Female Threaded Adapter, 2" PEX x 2" NPT	LF4572020	3.547	1.4	3.464	0.703	2.147	3.0	1.732	ProPEX 2"	FNPT 2"	2.23

Part name	Part no.	Codes	Standards	Listings
ProPEX lead-free (LF) brass female threaded adapters	All	UPC IBC IRC IPC NPC of Canada UMC NSPC IMC	ASTM F877 NSF/ANSI/CAN 372 ASTM F1960 CSA B137.5 NSF/ANSI/CAN 61 NSF/ANSI 14	IAPMO-ES ICC-ES-PMG U.P.Code
In addition, the following parts have additional codes, standards, or listings:				
ProPEX LF Brass Female Threaded Adapter, 1/2" PEX x 3/4" NPT	LF4575075			cNSFus-pw-G
ProPEX LF Brass Female Threaded Adapter, 3/4" PEX x 3/4" NPT	LF4577575		UL 1821	cNSFus-pw-fs-G
ProPEX LF Brass Female Threaded Adapter, 1" PEX x 1" NPT	LF4571010		UL 1821	cNSFus-pw-fs-G
ProPEX LF Brass Female Threaded Adapter, 1 1/4" PEX x 1 1/4" NPT	LF4571313		UL 1821	cNSFus-pw-fs-G
ProPEX LF Brass Female Threaded Adapter, 1/2" PEX x 1/2" NPT	LF4575050			cNSFus-pw-G
ProPEX LF Brass Female Threaded Adapter, 3/4" PEX x 1" NPT	LF4577510			cNSFus-pw-G
ProPEX LF Brass Female Threaded Adapter, 1 1/2" PEX x 1 1/2" NPT	LF4571515			cNSFus-pw-G
ProPEX LF Brass Female Threaded Adapter, 2" PEX x 2" NPT	LF4572020			cNSFus-pw-G

Installation	Related applications
Use the appropriate ProPEX Ring for PEX-a tubing. Refer to the Uponor AquaPEX® Professional Plumbing Installation Guide, AquaSAFE™ Residential Fire Sprinkler Installation Guide or Uponor Radiant Installation Handbook for additional information.	<ul style="list-style-type: none"> PEX-a Plumbing Systems Radiant Heating and Cooling Systems Permafrost Protection Systems Turf Conditioning Systems AquaSAFE™ Fire Safety Systems

Footnotes	Contact information		
-	<table> <tr> <td>Uponor Inc. 5925 148th Street West Apple Valley, MN 55124 T 800.321.4739 F 952.891.2008</td> <td>Uponor Ltd. 6510 Kennedy Road Mississauga, ON L5T 2X4 T 888.594.7726 F 800.638.9517</td> </tr> </table>	Uponor Inc. 5925 148th Street West Apple Valley, MN 55124 T 800.321.4739 F 952.891.2008	Uponor Ltd. 6510 Kennedy Road Mississauga, ON L5T 2X4 T 888.594.7726 F 800.638.9517
Uponor Inc. 5925 148th Street West Apple Valley, MN 55124 T 800.321.4739 F 952.891.2008	Uponor Ltd. 6510 Kennedy Road Mississauga, ON L5T 2X4 T 888.594.7726 F 800.638.9517		